

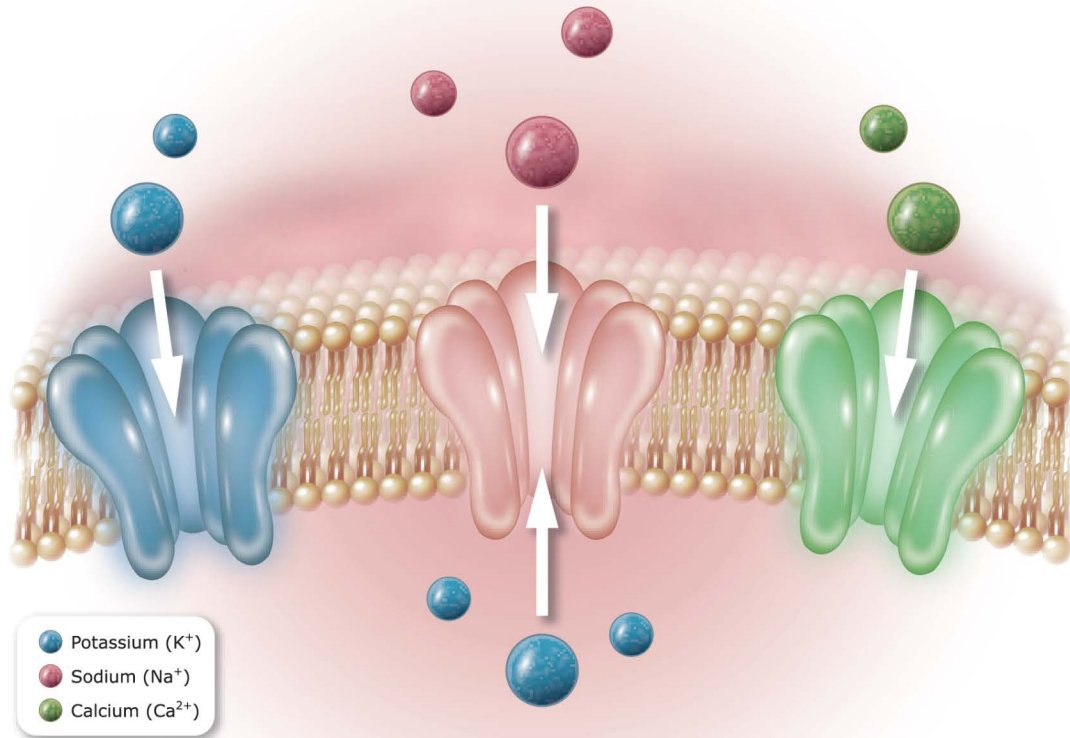
Ion Channels

Your Expertise

Our Antibodies

Accelerated Discovery

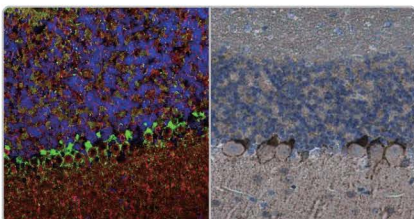
www.genetex.com




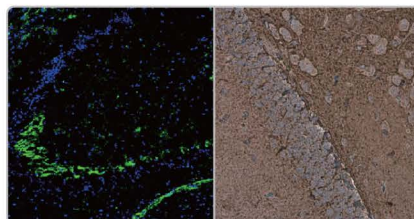
Ion channels are pore-forming, usually multimeric plasma membrane proteins that can open and close in response to chemical, temperature, or mechanical signals. An open channel allows specific ions to rapidly traverse the transmembrane passageway along an electrochemical gradient, generating an electrical signal that is propagated along excitable cells. Ion channels are of immense importance in clinical medicine as they are linked to a broad array of disorders and are targets of an ever-expanding, and commonly prescribed, armamentarium of pharmacologic agents. Nevertheless, there remains a great void in our understanding of ion channel biology, which limits our ability to develop more effective and more specific drugs.

GeneTex offers an outstanding selection of antibodies to support ion channel research. Please see the highlighted antibodies in this flyer or review our complete list of related products on the GeneTex website.

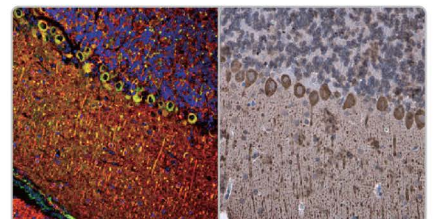
Highlighted products



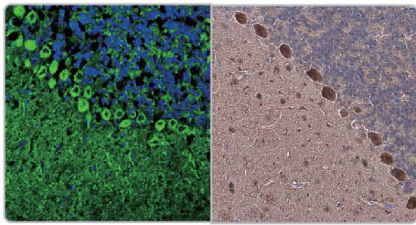
HCN1 antibody (GTX131334) 



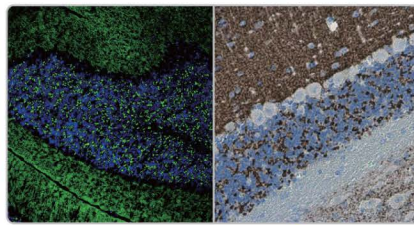
DPP6 antibody (GTX133338)



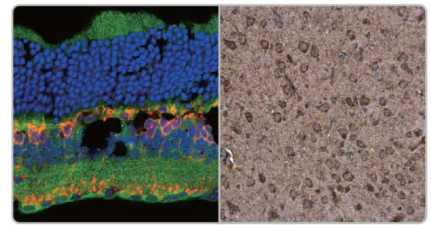
IP3 Receptor I antibody (GTX133104) 



CACNB4 (GTX100202)



VGLuT1 antibody (GTX133148)

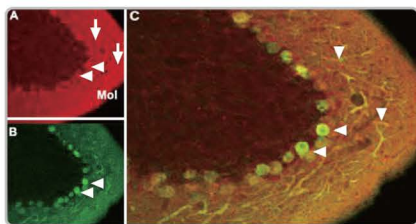


P2X7 antibody (GTX104288)

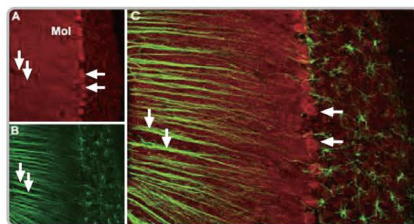
List of Representative Products

Citation Support Comparable Abs
 Orthogonal Validation Protein Overexpression

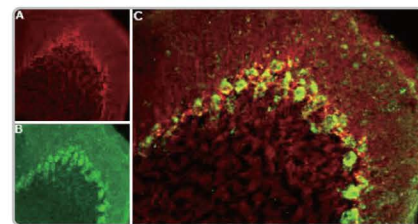
	Cat. No.	Product Name	Host & Clonality	Reactivity	Application		
	GTX54770	Cav alpha 2/delta 2 antibody	Rb pAb	Hu,Ms,Rat	WB, IHC-Fr		
	GTX108807	Cav beta 1 antibody [C1C3]	Rb pAb	Hu,Ms,Rat	WB, ICC/IF		
	GTX54771	Cav beta 2 antibody	Rb pAb	Ms,Rat	WB		
	GTX100202	Cav beta 4 antibody [C3], C-term	Rb pAb	Hu,Ms	WB, ICC/IF, IHC-P, IHC-Fr		
	GTX102941	Cav1.1 antibody [N2N3]	Rb pAb	Hu	WB, IHC-P		
	GTX54754	Cav1.2 antibody	Rb pAb	Hu,Ms,Rat	WB, ICC/IF, IHC-Fr, FACS, IP		
	GTX54755	Cav1.3 antibody	Rb pAb	Hu,Ms,Rat	WB, ICC/IF, IHC-Fr, IP		
	GTX54753	Cav2.1 antibody	Rb pAb	Hu,Ms,Rat	WB, ICC/IF, IHC-Fr, FACS		
	GTX54812	Cav2.2 antibody	Rb pAb	Hu,Ms,Rat	WB, ICC/IF, IHC-Fr, IP		
	GTX54756	Cav2.3 antibody	Rb pAb	Hu,Ms,Rat	WB, ICC/IF, IHC-Fr		
	GTX54760	Cav3.1 / CACNA1G antibody	Rb pAb	Hu,Ms,Rat	WB, ICC/IF, IHC-Fr		
	GTX54813	Cav3.2 antibody	Rb pAb	Hu,Ms,Rat	WB, ICC/IF, IHC-Fr, IP		
	GTX16604	Cav3.3 antibody	Rb pAb	Hu,Ms,Rat	WB, ICC/IF, IHC-Fr		
	GTX637015	IP3 Receptor I antibody [HL1541]	Rec Rb mAb	Hu,Ms,Rat	WB, IHC-P		
	GTX133104	IP3 Receptor I antibody	Rb pAb	Hu,Ms,Rat	WB, ICC/IF, IHC-Fr		
	GTX16613	ORAI1 antibody	Rb pAb	Ms,Rat	WB, ICC/IF, IHC-P, FACS, LCI		
	GTX120952	ORAI2 antibody	Rb pAb	Hu,Ms,Rat	WB, IHC-P		
	GTX85677	ORAI3 antibody	Rb pAb	Hu,Ms	WB, ICC/IF, IHC-P, ELISA		
	GTX113558	STIM1 antibody	Rb pAb	Hu,Ms,Rat	WB, ICC/IF		
	GTX85440	STIM2 antibody	Rb pAb	Hu,Ms,Rat	WB, IHC-P, ELISA		
Calcium Channels		GTX54765	TRPA1 antibody	Rb pAb	Hu,Ms,Rat	WB, ICC/IF, IHC-P, IHC-Fr, IP, LCI	
		GTX54859	TRPC1 antibody	Rb pAb	Hu,Ms,Rat	WB, ICC/IF, IHC-Fr, IP	
		GTX54761	TRPC2 antibody	Rb pAb	Ms,Rat	WB	
		GTX54860	TRPC3 antibody	Rb pAb	Hu,Ms,Rat	WB, ICC/IF, IHC-P, IHC-Fr, FACS, IP	
		GTX54758	TRPC4 antibody	Rb pAb	Hu,Ms,Rat	WB, ICC/IF, IHC-P, IHC-Fr, IP	
		GTX54861	TRPC5 antibody	Rb pAb	Hu,Ms,Rat	WB, ICC/IF, IHC-Fr, IP	
		GTX113858	TRPC6 antibody [N1N3]	Rb pAb	Hu,Ms,Rat	WB, IHC-P	
		GTX42022	TRPC7 antibody [S64A-36]	Ms mAb	Hu,Ms,Rat	WB, ICC/IF, IP, IHC	
		GTX112252	TRPM2 antibody [N1N2-2], N-term	Rb pAb	Hu,Rat	WB, IHC-P	
		GTX16612	TRPM3 antibody	Rb pAb	Hu,Ms,Rat	WB, ICC/IF, IHC	
		GTX83491	TRPM4 antibody [14C3]	Ms mAb	Hu,Rat	WB, IHC-P	
		GTX54864	TRPM5 antibody	Rb pAb	Hu,Ms,Rat	WB, IHC-P	
		GTX16611	TRPM6 antibody	Rb pAb	Ms,Rat	WB, IHC	
		GTX41997	TRPM7 antibody [S74-25]	Ms mAb	Hu,Ms,Rat	WB, ICC/IF, IP, IHC	
		GTX23243	TRPM8 antibody	Rb pAb	Hu,Ms	WB, IHC-P	
		GTX54762	VR1/ TRPV1 antibody	Rb pAb	Hu,Ms,Rat	WB, ICC/IF, IHC-Fr, FACS	
		GTX101868	TRPV2 / VRL1 antibody [C2C3], C-term	Rb pAb	Hu	WB, IHC-P	
		GTX54763	TRPV3 antibody	Rb pAb	Hu,Ms,Rat	WB, ICC/IF, IHC-Fr, LCI	
		GTX54764	TRPV4 antibody	Rb pAb	Hu,Ms,Rat	WB, ICC/IF, IHC-Fr, FACS, IP	
		GTX54868	TRPV5 antibody	Rb pAb	Hu,Ms,Rat	WB, ICC/IF, IHC-P	
		GTX54869	TRPV6 antibody	Rb pAb	Hu,Ms,Rat	WB, ICC/IF, IHC-P, IHC-Fr, IP	
		GTX54856	TrkA antibody	Rb pAb	Hu,Ms,Rat	WB, ICC/IF, IHC-Fr, FACS, IHC (Free Floating), LCI	
Catalytic Receptors			GTX133722	TrkB antibody	Rb pAb	Ms,Rat	WB, ICC/IF, IHC-P
		GTX54857	TrkB antibody	Rb pAb	Hu,Ms,Rat	WB, ICC/IF, IHC-Fr, FACS, LCI	
			GTX54858	TrkC antibody	Rb pAb	Hu,Ms,Rat	WB, ICC/IF, IHC-P, IHC-Fr, LCI
		GTX133148	VGLuT1 antibody	Rb pAb	Hu,Ms,Rat	WB, ICC/IF, IHC-P, IHC-Fr	
Transporters		GTX133142	VGLuT2 antibody	Rb pAb	Ms,Rat	WB, ICC/IF, IHC-Fr, IHC (Free Floating)	
		GTX134103	VGLuT3 antibody	Rb pAb	Ms,Rat	WB, ICC/IF	



Cav1.2 antibody (GTX54754)



Cav2.1 antibody (GTX54753)



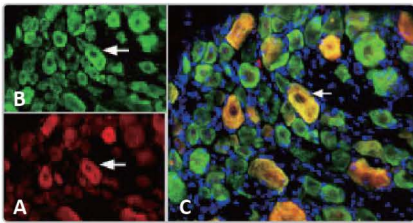
Cav3.2 antibody (GTX54813)

List of Representative Products

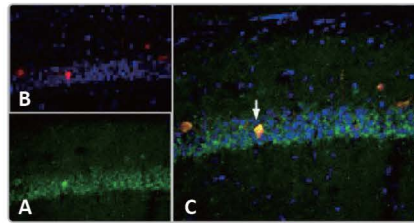
Citation Support Orthogonal Validation Protein Overexpression

	Cat. No.	Product Name	Host & Clonality	Reactivity	Application
	GTX79456	CNG Channel antibody [CNC 9C1]	Ms mAb	Hu,Ms,Rat	WB, ICC/IF, IHC
	GTX54787	CNGA1 antibody	Rb pAb	Rat	WB
	GTX112498	CNGA2 antibody [C1C3]	Rb pAb	Hu,Ms	WB, ICC/IF, IHC-P
	GTX105162	CNGA3 antibody [N3C3]	Rb pAb	Ms	IHC-P
	GTX16678	CNGA4 antibody	Rb pAb	Ms,Rat	WB, IHC-Fr
	GTX133338	DPP6 antibody	Rb pAb	Ms,Rat	WB, IHC-P, IHC-Fr
	GTX131334	HCN1 antibody	Rb pAb	Hu,Ms,Rat	WB, ICC/IF, IHC-P, IHC-Fr
	GTX54824	HCN2 antibody	Rb pAb	Hu,Ms,Rat	WB, ICC/IF, IHC-Fr, IP
	GTX79455	HCN3 antibody [TLL6C5]	Rat mAb	Hu,Ms,Rat	WB, IHC-P, IHC
	GTX42001	HCN4 antibody [S114-10]	Ms mAb	Hu,Ms,Rat	WB, ICC/IF, IHC-Fr
	GTX54811	KCNE1 antibody	Rb pAb	Ms,Rat	WB
	GTX54783	KCNE2 antibody	Rb pAb	Hu,Ms,Rat	WB, ICC/IF, IHC-Fr, IP
	GTX16690	KCNE3 antibody	Rb pAb	Hu,Ms,Rat	WB, ICC/IF, IHC
	GTX16649	KCNN1 antibody	Rb pAb	Ms,Rat	WB, ICC/IF, IHC
	GTX54829	KCNN2 antibody	Rb pAb	Hu,Ms,Rat	WB, ICC/IF, IHC-P, IP
	GTX54779	KCNN3 antibody	Rb pAb	Hu,Ms,Rat	WB, ICC/IF, IHC-Fr
	GTX130239	KCNN4 antibody	Rb pAb	Hu	WB
	GTX54786	KCNN4 antibody	Rb pAb	Hu,Ms,Rat	WB, ICC/IF, IP, IHC
	GTX54839	KCNQ1 antibody	Rb pAb	Hu,Ms,Rat	WB, ICC/IF, IP, IHC
	GTX54840	KCNQ2 antibody	Rb pAb	Hu,Ms,Rat	WB, ICC/IF, IHC
	GTX54782	KCNQ3 / Kv7.3 antibody	Rb pAb	Ms,Rat	WB, ICC/IF, IHC-Fr, IP, IHC
	GTX41990	KCNQ4 antibody [S43-6]	Ms mAb	Hu,Ms,Rat	WB, ICC/IF, IHC-Fr, IP
	GTX54793	KCNQ5 antibody	Rb pAb	Hu,Ms,Rat	WB, ICC/IF, IHC-Fr, IHC (Free Floating)
	GTX54775	Kir1.1 / KCNJ1 / ROMK antibody	Rb pAb	Hu,Ms,Rat	WB, ICC/IF, IHC-Fr, IP
	GTX54830	Kir2.1 antibody	Rb pAb	Hu,Ms,Rat	WB, ICC/IF, FACS, IP, IHC
	GTX16651	Kir2.2 antibody	Rb pAb	Hu,Ms,Rat	WB, ICC/IF
	GTX16644	Kir2.3 antibody	Rb pAb	Hu,Ms,Rat	WB, ICC/IF, IHC
	GTX108745	Kir3.1 / GIRK1 antibody [N3C3]	Rb pAb	Hu,Ms	WB, IHC-P
	GTX54832	Kir3.2 / GIRK2 antibody	Rb pAb	Hu,Ms,Rat	WB, ICC/IF, IHC-Fr, IP, IHC (Free Floating)
	GTX87115	Kir3.3 / KCNJ9 antibody	Rb pAb	Hu	WB
	GTX54780	Kir3.4 antibody	Rb pAb	Hu,Ms,Rat	WB, ICC/IF, IHC
	GTX54781	Kir4.1 antibody	Rb pAb	Hu,Ms,Rat	WB, ICC/IF, IP, IHC
	GTX54791	Kir5.1 antibody	Rb pAb	Hu,Ms,Rat	WB, IHC-P
	GTX54833	Kir6.1 antibody	Rb pAb	Hu,Ms,Rat	WB, IHC-P, IP
	GTX80493	Kir6.2 antibody, N-term	Rb pAb	Hu,Ms	WB, IHC-Fr, FACS
	GTX16698	Kir7.1 antibody	Rb pAb	Hu,Ms,Rat	WB, IHC-P, FACS
	GTX54834	Kv1.1 antibody	Rb pAb	Hu,Ms,Rat	WB, ICC/IF, IP, IHC
	GTX54835	Kv1.2 antibody	Rb pAb	Hu,Ms,Rat	WB, ICC/IF, IHC-Fr
	GTX16637	Kv1.3 antibody	Rb pAb	Hu,Ms,Rat	WB, ICC/IF, IP, IHC
	GTX54836	Kv1.4 antibody	Rb pAb	Hu,Ms,Rat	WB, ICC/IF, IHC
	GTX54837	Kv1.5 antibody	Rb pAb	Hu,Ms,Rat	WB, ICC/IF, IP, IHC
	GTX132559	Kv1.5 antibody	Rb pAb	Hu	WB
	GTX16638	Kv1.6 antibody	Rb pAb	Hu,Ms,Rat	WB, ICC/IF, IHC
	GTX54788	KCNH1 antibody	Rb pAb	Hu,Ms,Rat	WB, ICC/IF, IP, IHC
	GTX54789	KCNH2 / Kv11.1 antibody	Rb pAb	Hu,Rat	WB, ICC/IF, IHC-P, FACS, IP, LCI
	GTX47445	KCNH3 antibody, Internal	Rb pAb	Hu	WB
	GTX54790	KCNH4 / Kv12.3 antibody	Rb pAb	Hu,Rat	WB, IHC-P
	GTX16654	KCNH5 antibody	Rb pAb	Hu,Rat	WB, IHC
	GTX16688	KCNH6 antibody	Rb pAb	Hu,Ms,Rat	WB, IHC-Fr
	GTX123026	KCNH7 antibody [N1N2], N-term	Rb pAb	Hu,Ms,Rat	WB
	GTX16687	KCNH8 / Kv12.1 antibody	Rb pAb	Rat	WB

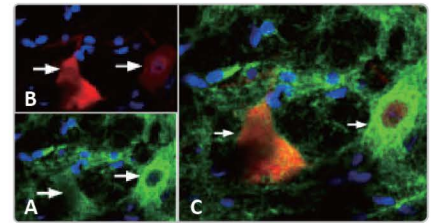
Potassium Channels



ASIC3 antibody (GTX54807)

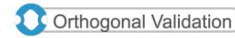


Nav1.6 antibody (GTX54842)



P2X4 antibody (GTX54851)

List of Representative Products



	Cat. No.	Product Name	Host & Clonality	Reactivity	Application
Sodium Channels	GTX87930	Sodium Channel-pan antibody	Rb pAb	Hu	WB, IHC-P
	GTX54804	ASIC1 antibody	Rb pAb	Hu,Ms,Rat	WB, ICC/IF, IHC-Fr, IP
	GTX54802	ASIC2 / ACCN1 antibody	Rb pAb	Hu,Ms,Rat	WB, ICC/IF, IP, IHC
	GTX54807	ASIC3 antibody	Rb pAb	Hu,Ms,Rat	WB, ICC/IF, IHC-Fr
	GTX110436	ENaC Alpha antibody [N3C2], Internal	Rb pAb	Hu,Ms	WB, IHC-P
	GTX41971	ENaC Beta antibody	Rb pAb	Hu,Ms,Rat	WB, ICC/IF, IHC-P, IHC
	GTX49367	ENaC Gamma antibody [11-35-1]	Ms mAb	Hu	WB, ICC/IF, IHC-P, ELISA, IHC (Formalin)
	GTX54841	Nav1.1 antibody	Rb pAb	Hu,Ms,Rat	WB, ICC/IF, IHC-Fr, IP
	GTX54797	Nav1.2 antibody	Rb pAb	Hu,Ms,Rat	WB, ICC/IF, IHC-Fr, IP
	GTX16937	Nav1.3 / SCN3A antibody	Rb pAb	Hu,Ms,Rat	WB, ICC/IF, IHC-Fr, IP
	GTX16970	Nav1.4 / SCN4A antibody	Rb pAb	Hu,Ms,Rat	WB, ICC/IF
	GTX54798	Nav1.5 antibody	Rb pAb	Hu,Ms,Rat	WB, ICC/IF, IHC-P, IHC-Fr, IP
	GTX54842	Nav1.6 antibody	Rb pAb	Hu,Ms,Rat	WB, ICC/IF, IHC-Fr
	GTX134494	Nav1.7 antibody	Rb pAb	Ms,Rat	WB, ICC/IF
	GTX42021	Nav1.8 antibody [S134-12]	Ms mAb	Hu,Ms,Rat	WB, ICC/IF, IHC
	GTX54806	Nav1.9 / SCN11A antibody	Rb pAb	Hu,Rat	WB, ICC/IF, IHC-Fr
	GTX16973	SCN1B antibody	Rb pAb	Ms,Rat	WB, ICC/IF, IHC-Fr, LCI
	GTX54799	SCN2B / Nav beta 2 antibody	Rb pAb	Hu,Ms,Rat	WB, IHC-Fr
	Chloride Channels	GTX104440	SCN3B antibody [N1C3]	Rb pAb	Hu
GTX54810		SCN4B antibody	Rb pAb	Hu,Ms,Rat	WB, ICC/IF, IHC-Fr, LCI
GTX100217		CLCA1 antibody [C1C2], Internal	Rb pAb	Hu	WB, ICC/IF, IHC-P
GTX32527		CLCN1 antibody	Rb pAb	Hu,Ms	WB
GTX54814		CLCN2 antibody	Rb pAb	Hu,Ms,Rat	WB, ICC/IF, IHC
GTX54815		CLCN3 antibody	Rb pAb	Hu,Ms,Rat	WB, ICC/IF, IP, IHC
GTX53963		CLCN5 antibody	Rb pAb	Hu,Ms	WB, ICC/IF
GTX34317		CLCN6 antibody	Rb pAb	Hu,Ms	WB
GTX55139		CLCN7 antibody	Rb pAb	Hu,Ms,Rat	WB, ICC/IF
GTX66428		CLCNKA antibody	Rb pAb	Hu	WB
P2XY Receptors	GTX47709	CLCNKB antibody, N-term	Rb pAb	Hu,Ms	WB, IHC
	GTX16925	P2X1 antibody	Rb pAb	Hu,Ms,Rat	WB, ICC/IF, IHC-Fr, FACS, LCI
	GTX108534	P2X2 antibody [C3], C-term	Rb pAb	Hu,Ms	WB, ICC/IF, IHC-P
	GTX16876	P2X3 antibody	Rb pAb	Hu,Ms,Rat	WB, ICC/IF, IHC-Fr, FACS
	GTX54851	P2X4 antibody	Rb pAb	Hu,Ms,Rat	WB, ICC/IF, IHC-P, IHC-Fr, FACS, IP
	GTX108504	P2X5 antibody [C3], C-term	Rb pAb	Hu	WB, ICC/IF, IHC-P
	GTX16843	P2X6 antibody	Rb pAb	Hu,Ms,Rat	WB, ICC/IF, FACS, IHC
	GTX104288	P2X7 antibody	Rb pAb	Hu,Ms,Rat	IHC-P, IHC-Fr
	GTX16924	P2Y1 antibody	Rb pAb	Hu,Ms,Rat	WB, ICC/IF, IHC-Fr, FACS, LCI
	GTX114609	P2Y2 antibody [N3C3]	Rb pAb	Hu,Ms,Rat	WB, ICC/IF, IP
	GTX87199	P2Y4 antibody	Rb pAb	Hu,Ms	WB, IHC-Fr
	GTX71897	P2Y5 antibody	Rb pAb	Hu	IHC-P
	GTX16829	P2Y6 antibody	Rb pAb	Hu,Ms,Rat	WB, ICC/IF, IHC-P, FACS, IP, IHC
	GTX108169	P2Y7 / Leukotriene B4 Receptor antibody [N1], N-term	Rb pAb	Hu	WB
	GTX77987	P2Y9 / GPR23 antibody	Rb pAb	Hu, Ms, Rat, Hm, Mk, Bat	IHC-P, FACS
	GTX71699	P2Y10 antibody	Rb pAb	Hu, Mk	IHC-P
GTX108241	P2Y11 antibody [C2C3], C-term	Rb pAb	Hu,Ms	WB, IHC-Fr	
GTX108143	P2Y12 antibody [N1], N-term	Rb pAb	Hu	WB	