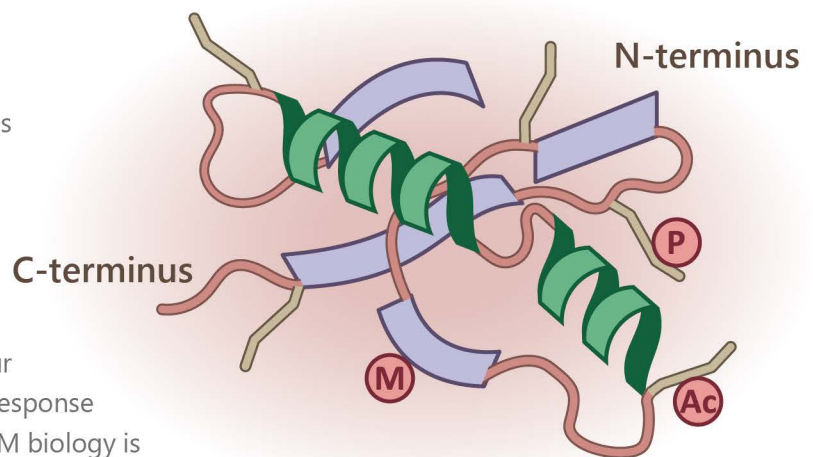


Recombinant Monoclonal Antibodies for Protein Post-Translational Modifications (PTM)

Your Expertise
Our Antibodies
Accelerated Discovery

Post-translational modification (PTM) refers to covalent alterations of a protein's amino acid residues involving the addition or removal of particular moieties (e.g., phosphorylation, methylation, ubiquitination, etc.). With hundreds of described PTMs, the functional flexibility of the proteome can be expanded and controlled in a temporal and cell type-specific manner to precisely contour signal transduction and gene expression in response to various stimuli. Therefore, the study of PTM biology is crucial for the understanding of both normal and abnormal physiology.

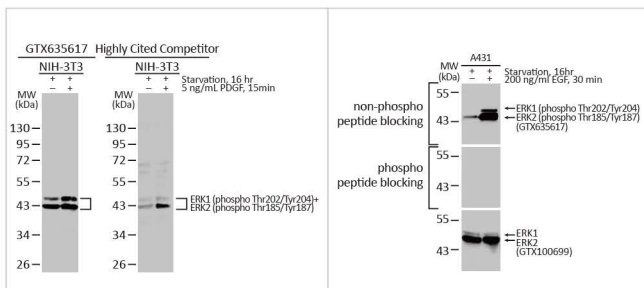


Advantages of Using GeneTex's Recombinant Rabbit mAbs to Detect Protein PTMs

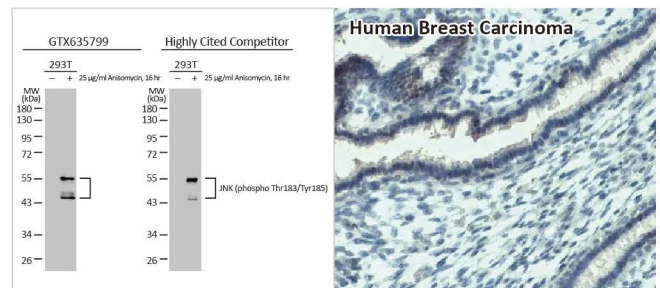
- Superior Sensitivity
- High Specificity
- Stringent Validation
- Consistent Performance

Highlighted Products

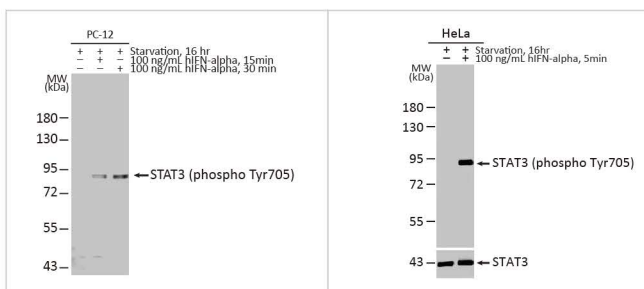
Cell Biology · Citation Support · Recombinant · KO/KD Validation · Comparable Abs · Orthogonal Validation



ERK1 (phospho Thr202/Tyr204) + ERK2 (phospho Thr185/Tyr187) antibody [HL173] (GTX635617) 




JNK (phospho Thr183/Tyr185) antibody [HL1008] (GTX635799) 

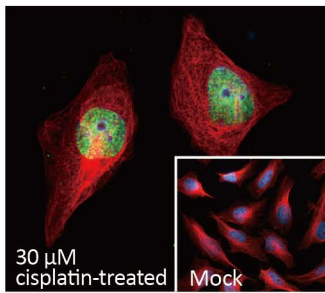


STAT3 (phospho Tyr705) antibody [HL1464] (GTX636938) 

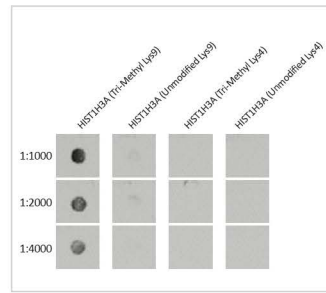


ATR (phospho Thr1989) antibody [HL132] (GTX635571) 

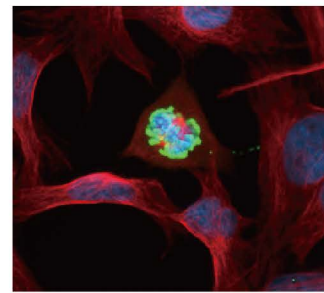
Histone Modifications



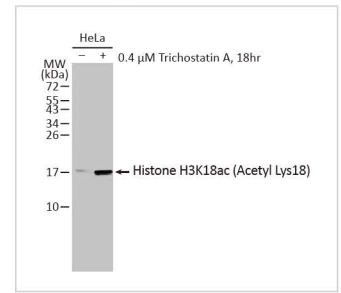
30 μM cisplatin-treated Mock
 Histone H2A.XS139ph (phospho Ser139) antibody [HL1299] (GTX636713)



Histone H3K9me3 (Tri-methyl Lys9) antibody [HL2149] (GTX638127)

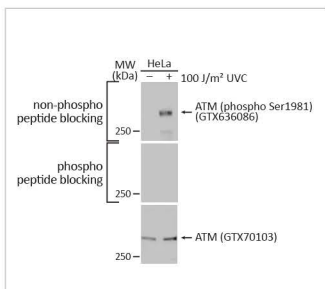


Histone H3S10ph (phospho Ser10) antibody [HL1752] (GTX637402)

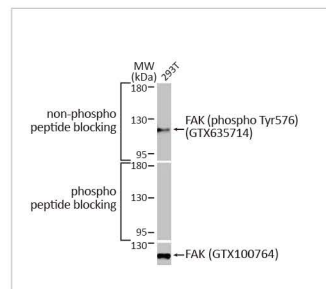


Histone H3K18ac (Acetyl Lys18) antibody [HL1463] (GTX636937)

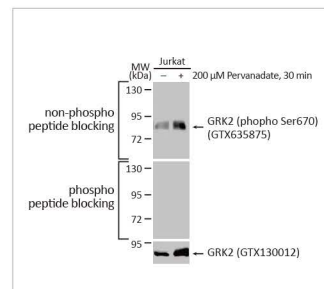
Cat. No.	Product Name	Clonality	Reactivity	Applications
GTX636086	ATM (phospho Ser1981) antibody [HL1062]	Rec Rb mAb	Hu	WB, ICC/IF, IHC-P
GTX635571	ATR (phospho Thr1989) antibody [HL132]	Rec Rb mAb	Hu, Ms, Rat	WB, ICC/IF, IHC-P
GTX637561	ATR (phospho Thr1989) antibody [HL1836]	Rec Rb mAb	Hu	WB, ICC/IF
GTX636948	CDK2 (phospho Tyr15) antibody [HL1474]	Rec Rb mAb	Hu, Ms, Rat, Dm	WB, IHC-P
GTX635572	Chk1 (phospho Ser345) antibody [HL122]	Rec Rb mAb	Hu	WB, ICC/IF
GTX639474	c-Jun (phospho Ser73) antibody [HL2713]	Rec Rb mAb	Hu	WB, ICC/IF
GTX640244	c-Met (phospho Tyr1234) antibody [HL2907]	Rec Rb mAb	Hu	WB
GTX639641	CREB (phospho Ser133) antibody [HL2776]	Rec Rb mAb	Hu, Ms	WB, IHC-P
GTX635617	ERK1 (phospho Thr202/Tyr204) + ERK2 (phospho Thr185/Tyr187) antibody [HL173]	Rec Rb mAb	Hu, Ms, Rat, Dm	WB, ICC/IF, IHC-P
GTX635714	FAK (phospho Tyr576) antibody [HL127]	Rec Rb mAb	Hu, Ms, Rat	WB
GTX635875	GRK2 (phospho Ser670) antibody [HL1035]	Rec Rb mAb	Hu, Ms	WB, IHC-P
GTX639335	GSK3 beta (phospho Ser9) antibody [HL2671]	Rec Rb mAb	Hu, Ms	WB
GTX636940	Her2 / ErbB2 (phospho Tyr1248) antibody [HL1466]	Rec Rb mAb	Hu, Rat	WB, ICC/IF, IHC-P
GTX636713	Histone H2A.XS139ph (phospho Ser139) antibody [HL1299]	Rec Rb mAb	Hu, Ms	WB, ICC/IF, IHC-P
GTX637288	Histone H2A.XS139ph (phospho Ser139) antibody [HL1689]	Rec Rb mAb	Zfsh	IHC-Wm
GTX636937	Histone H3K18ac (Acetyl Lys18) antibody [HL1463]	Rec Rb mAb	Hu, Ms, Rat, Dm	WB, ICC/IF, IHC-P, Dot
GTX638127	Histone H3K9me3 (Tri-methyl Lys9) antibody [HL2149]	Rec Rb mAb	Hu	WB, ICC/IF, Dot
GTX637402	Histone H3S10ph (phospho Ser10) antibody [HL1752]	Rec Rb mAb	Hu, Ms, Zfsh	WB, ICC/IF, IHC-P, IHC-Wm
GTX637634	IRE1 alpha (phospho Ser724) antibody [HL1885]	Rec Rb mAb	Hu	WB
GTX635799	JNK (phospho Thr183/Tyr185) antibody [HL1008]	Rec Rb mAb	Hu, Ms, Rat	WB, IHC-P
GTX635694	LYN (phospho Tyr397) antibody [HL122]	Rec Rb mAb	Hu, Ms	WB, IHC-P
GTX640170	Myosin Light Chain 2 (MLC-2v) (phospho Ser15) antibody [HL2891]	Rec Rb mAb	Hu, Ms	WB
GTX639569	p38 MAPK (phospho Tyr182) antibody [HL2740]	Rec Rb mAb	Hu	WB, IHC-P
GTX639570	p38 MAPK (phospho Tyr182) antibody [HL2741]	Rec Rb mAb	Hu, Ms, Rat	IHC-P
GTX635621	p70 S6K (phospho Thr421/Ser424) antibody [HL129]	Rec Rb mAb	Hu, Ms, Rat	WB, IHC-P
GTX637309	Phospholamban (phospho Ser16) antibody [HL1710]	Rec Rb mAb	Ms	WB
GTX636681	PKC (pan) (zeta phospho Thr410) antibody [HL1279]	Rec Rb mAb	Hu, Ms, Rat, Dm	WB, ICC/IF, IHC-P
GTX636461	PKC theta (phospho Thr219) antibody [HL1157]	Rec Rb mAb	Hu	WB, ICC/IF
GTX636912	PKR (phospho Thr446) antibody [HL1439]	Rec Rb mAb	Hu	WB, ICC/IF
GTX636103	ROCK2 (phospho Ser1366) antibody [HL1071]	Rec Rb mAb	Hu	WB, ICC/IF
GTX636934	SOD2 (Acetyl Lys68) antibody [HL1460]	Rec Rb mAb	Hu, Ms	WB
GTX636938	STAT3 (phospho Tyr705) antibody [HL1464]	Rec Rb mAb	Hu, Rat	WB
GTX638855	Tau (phospho Thr181) antibody [HL2497]	Rec Rb mAb	Hu, Ms, Rat	WB, IHC-P, ELISA, Sandwich ELISA
GTX638856	Tau (phospho Thr181) antibody [HL2498]	Rec Rb mAb	Hu, Ms	WB, IHC-P, ELISA, Sandwich ELISA
GTX636678	Tau (phospho Thr217) antibody [HL1276]	Rec Rb mAb	Hu, Ms, Rat	WB, ICC/IF, IHC-P



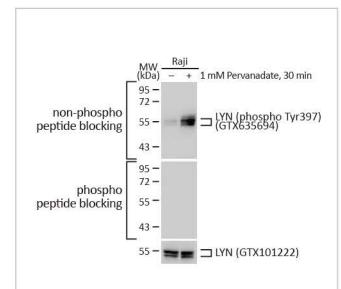
ATM (phospho Ser1981) antibody [HL1062] (GTX636086)



FAK (phospho Tyr576) antibody [HL127] (GTX635714)



GRK2 (phospho Ser670) antibody [HL1035] (GTX635875)



LYN (phospho Tyr397) antibody [HL122] (GTX635694)