

IZUMO1 antibody

Cat. No. GTX00746

Host	Rabbit
Clonality	Polyclonal
Isotype	IgG
Applications	WB, ICC/IF, IHC-P, Neutralizing/Inhibition
Reactivity	Human, Mouse

Package
100 µl

Applications

Application Note

*Optimal dilutions/concentrations should be determined by the researcher.

Suggested dilution	Recommended dilution
WB	1:1000
ICC/IF	1:100-1:300
IHC-P	1:100
Neutralizing/Inhibition	Assay dependent

Note : It shows the inhibition of sperm fusion with egg.

Not tested in other applications.

Calculated MW 39 kDa. ([Note](#))

Properties

Form	Liquid
Buffer	Serum
Preservative	0.1% Sodium azide
Storage	Store as concentrated solution. Centrifuge briefly prior to opening vial. For short-term storage (1-2 weeks), store at 4°C. For long-term storage, aliquot and store at -20°C or below. Avoid multiple freeze-thaw cycles.
Immunogen	KLH-conjugated synthetic peptides corresponding to the following three regions of human IZUMO1: [A] C+KSLEKDYLPGHLDA [B] C+TQVPKEKATDSRQQ [C] C+ATTESSISLQPLQ
Purification	Unpurified
Conjugation	Unconjugated



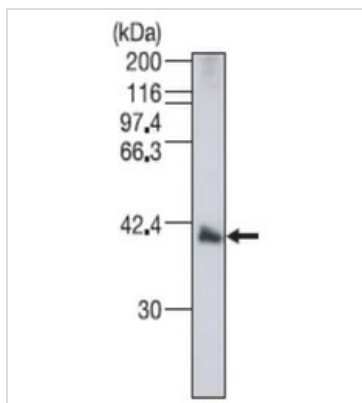
For full product information, images and publications, please visit our [website](#).

For laboratory research use only. Not for any clinical, therapeutic, or diagnostic use in humans or animals. Not for animal or human consumption.

Note

Purchasers shall not, and agree not to enable third parties to, analyze, copy, reverse engineer or otherwise attempt to determine the structure or sequence of the product.

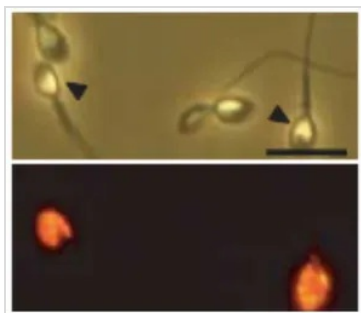
DATA IMAGES

**GTX00746 WB Image**

WB analysis of human sperm using GTX00746 IZUMO1 antibody.

Dilution : 1:1000

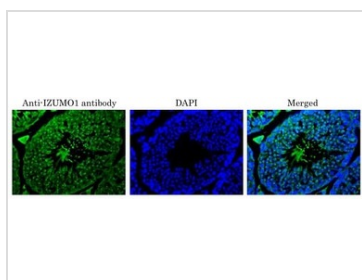
Loading : 20 µg

**GTX00746 ICC/IF Image**

ICC/IF analysis of human sperms using GTX00746 IZUMO1 antibody.

Lower : Primary antibody

Dilution : 1:100

**GTX00746 IHC-P Image**

IHC-P analysis of mouse testis tissue section using GTX00746 IZUMO1 antibody.

Dilution : 1:100

Antigen retrieval : Proteolytic-Induced Epitope Retrieval



For full product information, images and publications, please visit our [website](#).