

PD-L1 antibody [MSVA-711R] HistoMAX™

Cat. No. GTX04362

Host	Rabbit
Clonality	Monoclonal
Isotype	IgG
Applications	IHC-P
Reactivity	Human

Package

500 µl, 100 µl

PRODUCT

This antibody was validated on 76 different Normal Tissues by IHC-P.

Summary

[Go to Normal Tissue Gallery](#)
[Go to Cancer Tissue Gallery](#)

Applications

Application Note

*Optimal dilutions/concentrations should be determined by the researcher.

Suggested dilution	Recommended dilution
IHC-P	1:100-1:200

Note : Manual staining : Heat-induced antigen retrieval for 5 minutes in an autoclave at 121°C in pH 7.8 Tris-EDTA-based Target Retrieval Solution buffer. Based on the testing result, the pH 9.0 showed a strongest staining pattern. The pH 7.8 is acceptable but lower pH results in a significant reduction of sensitivity.

This antibody has been validated by Autostainer including Agilent/Dako - Autostainer Link 48 and BOND RX - Leica. Please refer to the [protocol](#).

Not tested in other applications.

Product Note **Highly recommended for IHC-P in human tissues.**

Properties

Form	Liquid
Buffer	PBS, 0.05% BSA (Please contact us for PBS only format)
Preservative	0.05% sodium azide
Storage	Store as concentrated solution. Centrifuge briefly prior to opening vial. For short-term storage (1-2 weeks), store at 4°C. For long-term storage, aliquot and store at -20°C or below. Avoid multiple freeze-thaw cycles.
Concentration	0.2 mg/ml (Please refer to the vial label for the specific concentration.)
Immunogen	KLH-conjugated linear peptide corresponding to human PD-L1



For full product information, images and publications, please visit our [website](#).

Purification Protein A/G purified

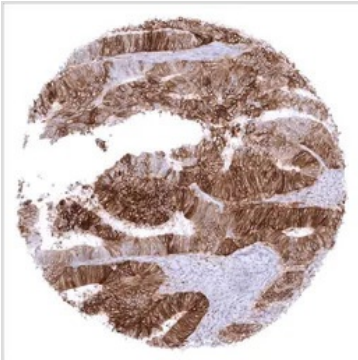
Conjugation Unconjugated

Note

For laboratory research use only. Not for any clinical, therapeutic, or diagnostic use in humans or animals. Not for animal or human consumption.

Purchasers shall not, and agree not to enable third parties to, analyze, copy, reverse engineer or otherwise attempt to determine the structure or sequence of the product.

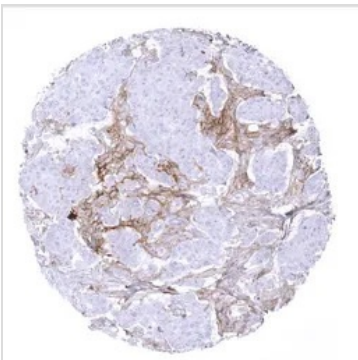
DATA IMAGES



GTX04362 IHC-P Image

IHC-P analysis of human colorectal adenocarcinoma (COAD) tissue using GTX04362 PD-L1 antibody [MSVA-711R] HistoMAX™.

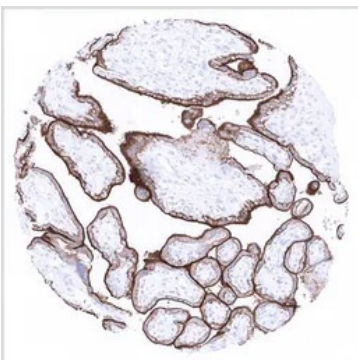
Colorectal adenocarcinoma with moderate to strong membranous PD-L1 staining in the vast majority of its tumor cells.



GTX04362 IHC-P Image

IHC-P analysis of human invasive breast cancer of no special type (NST) tissue using GTX04362 PD-L1 antibody [MSVA-711R] HistoMAX™.

Breast cancer NST with PD-L1 negative tumor cells but intense PD-L1 staining in tumor associated inflammatory cells.



GTX04362 IHC-P Image

IHC-P analysis of human placenta (mature) tissue using GTX04362 PD-L1 antibody [MSVA-711R] HistoMAX™.

PD-L1 staining is predominantly seen at the surface membrane of the syncytiotrophoblast.



For full product information, images and publications, please visit our [website](#).