

CD3 epsilon antibody [MSVA-003R] HistoMAX™

Cat. No. GTX04389

Host	Rabbit
Clonality	Monoclonal
Isotype	IgG
Applications	IHC-P
Reactivity	Human

Package

500 µl, 100 µl

PRODUCT

This antibody was validated on 76 different Normal Tissues by IHC-P.

Summary

[Go to Normal Tissue Gallery](#)

[Go to Cancer Tissue Gallery](#)

Applications

Application Note

*Optimal dilutions/concentrations should be determined by the researcher.

Suggested dilution Recommended dilution

IHC-P 1:100-1:200

Note : Manual staining : Heat-induced antigen retrieval for 5 minutes in an autoclave at 121°C in pH 7.8 Tris-EDTA-based Target Retrieval Solution buffer.

This antibody has been validated by Autostainer including Agilent/Dako - Autostainer Link 48 and BOND RX - Leica. The detailed steps by Autostainer please refer to the [protocol](#).

Not tested in other applications.

Product Note **Highly recommended for IHC-P in human tissues.**

Properties

Form	Liquid
Buffer	PBS, 0.05% BSA (Please contact us for PBS only format)
Preservative	0.05% sodium azide
Storage	Store as concentrated solution. Centrifuge briefly prior to opening vial. For short-term storage (1-2 weeks), store at 4°C. For long-term storage, aliquot and store at -20°C or below. Avoid multiple freeze-thaw cycles.
Concentration	0.2 mg/ml (Please refer to the vial label for the specific concentration.)
Immunogen	A synthetic peptide from human CD3e protein (around aa 20-40)
Purification	Protein A/G purified



For full product information, images and publications, please visit our [website](#).

Conjugation

Unconjugated

Note

For laboratory research use only. Not for any clinical, therapeutic, or diagnostic use in humans or animals. Not for animal or human consumption.

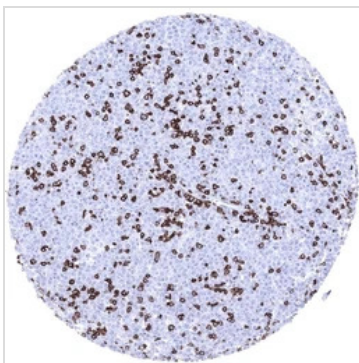
Purchasers shall not, and agree not to enable third parties to, analyze, copy, reverse engineer or otherwise attempt to determine the structure or sequence of the product.

DATA IMAGES

GTX04389 IHC-P Image

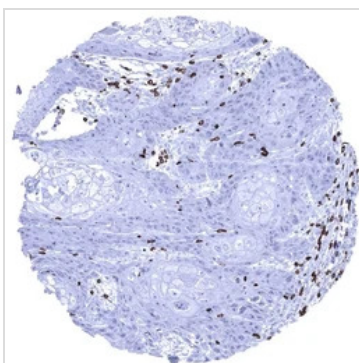
IHC-P analysis of human mucosa from appendix tissue using GTX04389 CD3 epsilon antibody [MSVA-003R] HistoMAX™.

In the appendix numerous CD3 positive T lymphocytes occur in the epithelium the lamina propria and in germinal centres.


GTX04389 IHC-P Image

IHC-P analysis of human diffuse large B-cell lymphoma (DLBCL) tissue using GTX04389 CD3 epsilon antibody [MSVA-003R] HistoMAX™.

Diffuse large B cell lymphoma infiltrated by numerous CD3 positive non neoplastic lymphocytes.


GTX04389 IHC-P Image

IHC-P analysis of human squamous cell carcinoma (SCC) from skin tissue using GTX04389 CD3 epsilon antibody [MSVA-003R] HistoMAX™.

Squamous cell carcinoma containing numerous CD3 positive T lymphocytes.



For full product information, images and publications, please visit our [website](https://www.genetex.com).