

## MUC1 antibody [MSVA-672R] HistoMAX™

Cat. No. GTX04397

Host	Rabbit
Clonality	Monoclonal
Isotype	IgG
Applications	IHC-P
Reactivity	Human

## Package

500 µl, 100 µl

## PRODUCT

This antibody was validated on 76 different Normal Tissues by IHC-P.

## Summary

[Go to Normal Tissue Gallery](#)
[Go to Cancer Tissue Gallery](#)

## Applications

## Application Note

\*Optimal dilutions/concentrations should be determined by the researcher.

## Suggested dilution

## Recommended dilution

IHC-P	1:75-1:150
-------	------------

**Note : Manual staining : Heat-induced antigen retrieval for 5 minutes in an autoclave at 121°C in pH 7.8 Tris-EDTA-based Target Retrieval Solution buffer. Based on the testing result, the pH 9.0 showed a strongest staining pattern. The pH 7.8 and pH 6.0 is acceptable without resulting in a significant reduction of sensitivity.**

Not tested in other applications.

## Product Note

**Highly recommended for IHC-P in human tissues.**

## Properties

Form	Liquid
Buffer	PBS, 0.05% BSA (Please contact us for PBS only format)
Preservative	0.05% sodium azide
Storage	Store as concentrated solution. Centrifuge briefly prior to opening vial. For short-term storage (1-2 weeks), store at 4°C. For long-term storage, aliquot and store at -20°C or below. Avoid multiple freeze-thaw cycles.
Concentration	0.2 mg/ml (Please refer to the vial label for the specific concentration.)
Immunogen	Recombinant human MUC1 protein
Purification	Protein A/G purified
Conjugation	Unconjugated

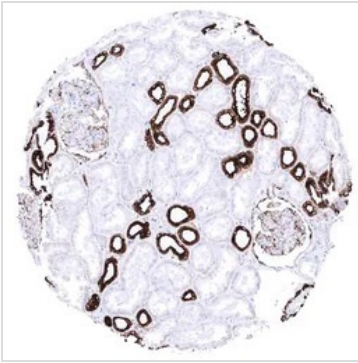


For full product information, images and publications, please visit our [website](#).

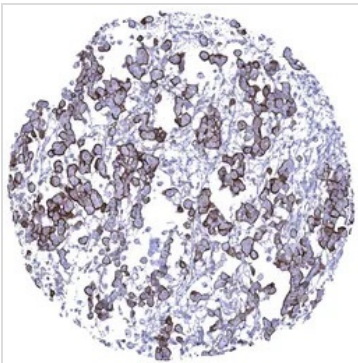
For laboratory research use only. Not for any clinical, therapeutic, or diagnostic use in humans or animals. Not for animal or human consumption.

**Note**  
Purchasers shall not, and agree not to enable third parties to, analyze, copy, reverse engineer or otherwise attempt to determine the structure or sequence of the product.

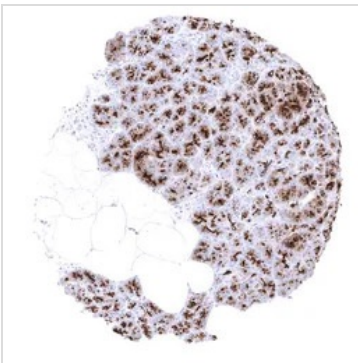
## DATA IMAGES

**GTX04397 IHC-P Image**

IHC-P analysis of human renal cortex tissue using GTX04397 MUC1 antibody [MSVA-672R] HistoMAX™. In the kidney, distal tubuli and collecting ducts show a strong cytoplasmic MUC1 staining while proximal tubuli are negative and cells of the Bowman's capsule show weak to moderate positivity.

**GTX04397 IHC-P Image**

IHC-P analysis of human epithelioid malignant mesothelioma tissue using GTX04397 MUC1 antibody [MSVA-672R] HistoMAX™. Malignant mesothelioma epithelioid variant with strong predominantly membranous MUC1 immunostaining of tumor cells.

**GTX04397 IHC-P Image**

IHC-P analysis of human pancreas tissue using GTX04397 MUC1 antibody [MSVA-672R] HistoMAX™. Pancreatic acinar cells show a strong MUC1 immunostaining of the apical membranes and of granular Golgi like structures below the apical surface.



For full product information, images and publications, please visit our [website](#).