

Cytokeratin 10 antibody [MSVA-610M] HistoMAX™

Cat. No. GTX04401

| | |
|---------------------|------------|
| Host | Mouse |
| Clonality | Monoclonal |
| Isotype | IgG1 |
| Applications | IHC-P |
| Reactivity | Human |

Package

500 µl, 100 µl

PRODUCT

This antibody was validated on 76 different Normal Tissues by IHC-P.

Summary

[Go to Normal Tissue Gallery](#)

[Go to Cancer Tissue Gallery](#)

Applications

Application Note

*Optimal dilutions/concentrations should be determined by the researcher.

| Suggested dilution | Recommended dilution |
|---|----------------------|
| IHC-P | 1:100-1:200 |
| Note : Manual staining : Heat-induced antigen retrieval for 5 minutes in an autoclave at 121°C in pH 7.8 Tris-EDTA-based Target Retrieval Solution buffer. Based on the testing result, the pH 9.0 showed a strongest staining pattern. The pH 7.8 is acceptable but lower pH results in a significant reduction of sensitivity. | |

Not tested in other applications.

Product Note

Highly recommended for IHC-P in human tissues.

Properties

| | |
|----------------------|--|
| Form | Liquid |
| Buffer | PBS, 0.05% BSA (Please contact us for PBS only format) |
| Preservative | 0.05% sodium azide |
| Storage | Store as concentrated solution. Centrifuge briefly prior to opening vial. For short-term storage (1-2 weeks), store at 4°C. For long-term storage, aliquot and store at -20°C or below. Avoid multiple freeze-thaw cycles. |
| Concentration | 0.2 mg/ml (Please refer to the vial label for the specific concentration.) |
| Immunogen | Recombinant full-length human KRT10 protein. |
| Purification | Protein A/G purified |
| Conjugation | Unconjugated |

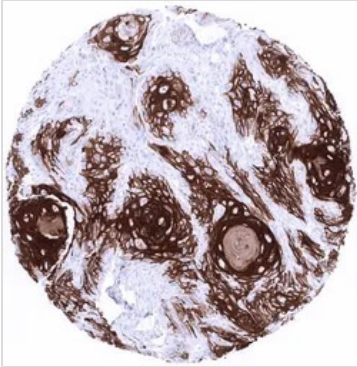


For full product information, images and publications, please visit our [website](#).

For laboratory research use only. Not for any clinical, therapeutic, or diagnostic use in humans or animals. Not for animal or human consumption.

Note

Purchasers shall not, and agree not to enable third parties to, analyze, copy, reverse engineer or otherwise attempt to determine the structure or sequence of the product.

DATA IMAGES

GTx04401 IHC-P Image

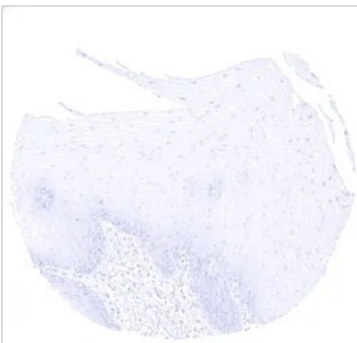
IHC-P analysis of human squamous cell carcinoma (SCC) from vulva tissue using GTx04401 Cytokeratin 10 antibody [MSVA-610M] HistoMAX™.

Strong Cytokeratin 10 immunostaining in a squamous cell carcinoma of the vulva. The basal cell layers are largely unstained.


GTx04401 IHC-P Image

IHC-P analysis of human skin tissue using GTx04401 Cytokeratin 10 antibody [MSVA-610M] HistoMAX™.

Cytokeratin 10 is strongly positive in all suprabasal cell layers of the epidermis and in associated sebaceous glands and hair follicles. The basal cell layer remains strictly Cytokeratin 10 negative.


GTx04401 IHC-P Image

IHC-P analysis of human esophagus tissue using GTx04401 Cytokeratin 10 antibody [MSVA-610M] HistoMAX™.

Absence of cytokeratin 10 staining in non keratinizing squamous epithelium of the esophagus.



For full product information, images and publications, please visit our [website](https://www.genetex.com).