

GATA3 antibody [MSVA-450M] HistoMAX™

Cat. No. GTX04420

Host	Mouse
Clonality	Monoclonal
Isotype	IgG2b
Applications	IHC-P
Reactivity	Human

Package

500 µl, 100 µl

PRODUCT

This antibody was validated on 76 different Normal Tissues by IHC-P.

Summary

[Go to Normal Tissue Gallery](#)

[Go to Cancer Tissue Gallery](#)

Applications

Application Note

*Optimal dilutions/concentrations should be determined by the researcher.

Suggested dilution Recommended dilution

IHC-P 1:50-1:100

Note : Manual staining : Heat-induced antigen retrieval for 5 minutes in an autoclave at 121°C in pH 7.8 Tris-EDTA-based Target Retrieval Solution buffer.

This antibody has been validated by Autostainer including Agilent/Dako - Autostainer Link 48 and BOND RX - Leica. The detailed steps by Autostainer please refer to the [protocol](#).

Not tested in other applications.

Product Note **Highly recommended for IHC-P in human tissues.**

Properties

Form	Liquid
Buffer	PBS, 0.05% BSA (Please contact us for PBS only format)
Preservative	0.05% sodium azide
Storage	Store as concentrated solution. Centrifuge briefly prior to opening vial. For short-term storage (1-2 weeks), store at 4°C. For long-term storage, aliquot and store at -20°C or below. Avoid multiple freeze-thaw cycles.
Concentration	0.2 mg/ml (Please refer to the vial label for the specific concentration.)
Immunogen	Recombinant full-length human GATA-3 protein
Purification	Protein A/G purified



For full product information, images and publications, please visit our [website](#).

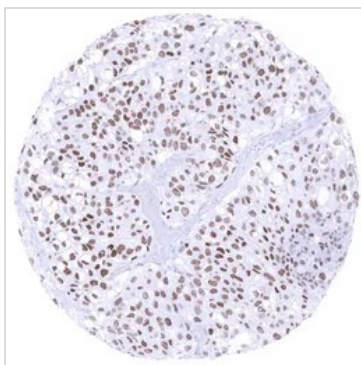
Conjugation

Unconjugated

Note

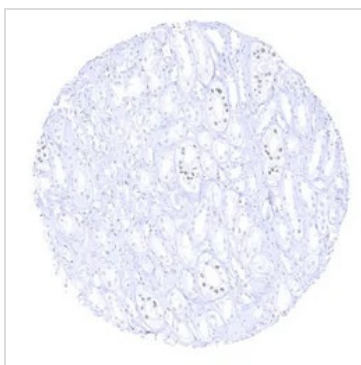
For laboratory research use only. Not for any clinical, therapeutic, or diagnostic use in humans or animals. Not for animal or human consumption.

Purchasers shall not, and agree not to enable third parties to, analyze, copy, reverse engineer or otherwise attempt to determine the structure or sequence of the product.

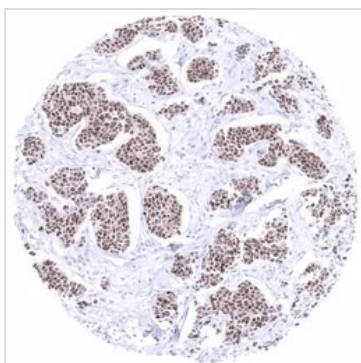
DATA IMAGES

GTX04420 IHC-P Image

IHC-P analysis of human muscle-invasive bladder cancer (MIBC) tissue using GTX04420 GATA3 antibody [MSVA-450M] HistoMAX™.

Muscle invasive urothelial carcinoma with moderate to strong GATA3 immunostaining of tumor cells.


GTX04420 IHC-P Image

IHC-P analysis of human renal medulla tissue using GTX04420 GATA3 antibody [MSVA-450M] HistoMAX™. In the kidney a moderate to strong GATA3 positivity is seen in collecting ducts.


GTX04420 IHC-P Image

IHC-P analysis of human invasive breast cancer of no special type (NST) tissue using GTX04420 GATA3 antibody [MSVA-450M] HistoMAX™.

Breast cancer of no special type NST showing moderate to strong GATA3 immunostaining.



For full product information, images and publications, please visit our [website](#).