

PAX8 antibody [MSVA-708R] HistoMAX™

Cat. No. GTX04430

Host	Rabbit
Clonality	Monoclonal
Isotype	IgG
Applications	IHC-P
Reactivity	Human

Package

500 µl, 100 µl

PRODUCT

This antibody was validated on 76 different Normal Tissues by IHC-P.

Summary

[Go to Normal Tissue Gallery](#)
[Go to Cancer Tissue Gallery](#)

Applications

Application Note

*Optimal dilutions/concentrations should be determined by the researcher.

Suggested dilution

Recommended dilution

IHC-P	1:100-1:200
-------	-------------

Note : Manual staining : Heat-induced antigen retrieval for 5 minutes in an autoclave at 121°C in pH 7.8 Tris-EDTA-based Target Retrieval Solution buffer.

Not tested in other applications.

Product Note

Highly recommended for IHC-P in human tissues.

Properties

Form	Liquid
Buffer	PBS, 0.05% BSA (Please contact us for PBS only format)
Preservative	0.05% sodium azide
Storage	Store as concentrated solution. Centrifuge briefly prior to opening vial. For short-term storage (1-2 weeks), store at 4°C. For long-term storage, aliquot and store at -20°C or below. Avoid multiple freeze-thaw cycles.
Concentration	0.2 mg/ml (Please refer to the vial label for the specific concentration.)
Immunogen	Recombinant fragment of human PAX8 protein
Purification	Protein A/G purified
Conjugation	Unconjugated

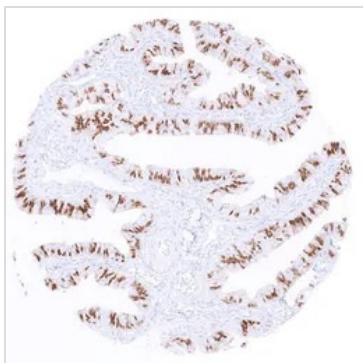


For full product information, images and publications, please visit our [website](#).

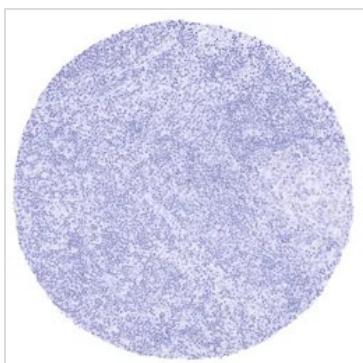
For laboratory research use only. Not for any clinical, therapeutic, or diagnostic use in humans or animals. Not for animal or human consumption.

Note
Purchasers shall not, and agree not to enable third parties to, analyze, copy, reverse engineer or otherwise attempt to determine the structure or sequence of the product.

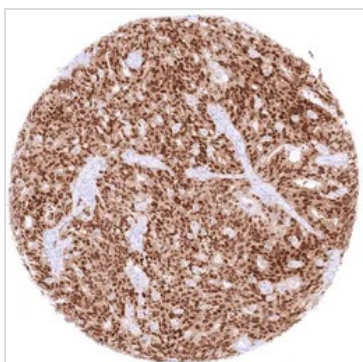
DATA IMAGES

**GTX04430 IHC-P Image**

IHC-P analysis of human fallopian tube tissue using GTX04430 PAX8 antibody [MSVA-708R] HistoMAX™. Strong nuclear PAX8 staining of a subset of epithelial cells in the fallopian tube.

**GTX04430 IHC-P Image**

IHC-P analysis of human lymph node tissue using GTX04430 PAX8 antibody [MSVA-708R] HistoMAX™. PAX8 staining is completely absent in lymphocytes lymph node.

**GTX04430 IHC-P Image**

IHC-P analysis of human high-grade serous ovarian cancer (HGSOC) tissue using GTX04430 PAX8 antibody [MSVA-708R] HistoMAX™. Serous high grade ovarian carcinoma with strong PAX8 staining of tumor cells.



For full product information, images and publications, please visit our [website](#).