

CPA1 antibody [MSVA-601M] HistoMAX™

Cat. No. GTX04433

Host	Mouse
Clonality	Monoclonal
Isotype	IgG1
Applications	IHC-P
Reactivity	Human

Package

500 µl, 100 µl

PRODUCT

This antibody was validated on 76 different Normal Tissues by IHC-P.

Summary

[Go to Normal Tissue Gallery](#)
[Go to Cancer Tissue Gallery](#)

Applications

Application Note

*Optimal dilutions/concentrations should be determined by the researcher.

Suggested dilution	Recommended dilution
IHC-P	1:100-1:200

Note : Manual staining : Heat-induced antigen retrieval for 5 minutes in an autoclave at 121°C in pH 7.8 Tris-EDTA-based Target Retrieval Solution buffer.

This antibody has been validated by Autostainer including Agilent/Dako - Autostainer Link 48, Bond RX-Lecia, and Roche-Ventana Discovery ULTRA. The detailed steps by Autostainer please refer to the [protocol](#).

Not tested in other applications.

Product Note **Highly recommended for IHC-P in human tissues.**

Properties

Form	Liquid
Buffer	PBS, 0.05% BSA (Please contact us for PBS only format)
Preservative	0.05% sodium azide
Storage	Store as concentrated solution. Centrifuge briefly prior to opening vial. For short-term storage (1-2 weeks), store at 4°C. For long-term storage, aliquot and store at -20°C or below. Avoid multiple freeze-thaw cycles.
Concentration	0.2 mg/ml (Please refer to the vial label for the specific concentration.)
Immunogen	Recombinant full-length human CPA1 protein
Purification	Protein A/G purified



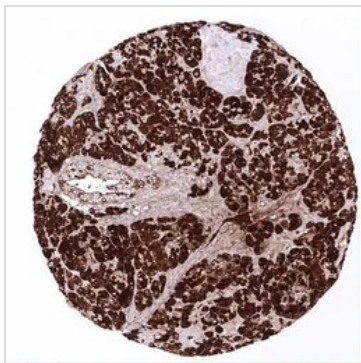
For full product information, images and publications, please visit our [website](#).

Conjugation Unconjugated

Note For laboratory research use only. Not for any clinical, therapeutic, or diagnostic use in humans or animals. Not for animal or human consumption.

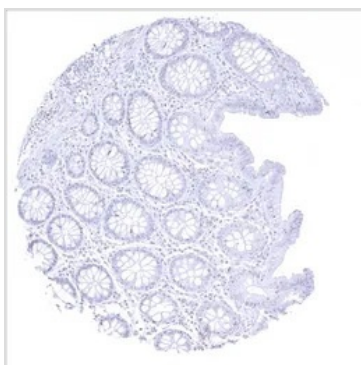
Purchasers shall not, and agree not to enable third parties to, analyze, copy, reverse engineer or otherwise attempt to determine the structure or sequence of the product.

DATA IMAGES



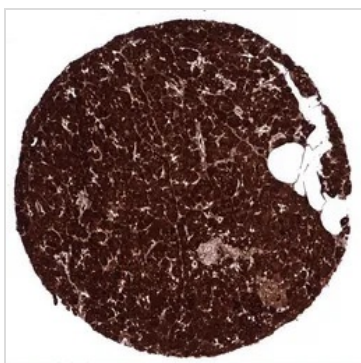
GTX04433 IHC-P Image

IHC-P analysis of human pancreas tissue using GTX04433 CPA1 antibody [MSVA-601M] HistoMAX™. Strong CPA1 staining in pancreatic acinar cells. Because of the high level of expression, adjacent tissues (stroma; excretory ducts) also exhibit some staining due to a contamination effect.



GTX04433 IHC-P Image

IHC-P analysis of human mucosa from descending colon tissue using GTX04433 CPA1 antibody [MSVA-601M] HistoMAX™. CPA1 negative mucosa of the colon descendens.



GTX04433 IHC-P Image

IHC-P analysis of human pancreas tissue using GTX04433 CPA1 antibody [MSVA-601M] HistoMAX™. Strong CPA1 immunostaining in acinar cells of the pancreas.



For full product information, images and publications, please visit our [website](#).