

## Elastase 3B antibody [MSVA-410M] HistoMAX™

Cat. No. GTX04445

<b>Host</b>	Mouse
<b>Clonality</b>	Monoclonal
<b>Isotype</b>	IgG1
<b>Applications</b>	IHC-P
<b>Reactivity</b>	Human

## Package

500 µl, 100 µl

## PRODUCT

This antibody was validated on 76 different Normal Tissues by IHC-P.

## Summary

[Go to Normal Tissue Gallery](#)
[Go to Cancer Tissue Gallery](#)

## Applications

## Application Note

\*Optimal dilutions/concentrations should be determined by the researcher.

## Suggested dilution

## Recommended dilution

IHC-P

1:100-1:200

**Note : Manual staining : Heat-induced antigen retrieval for 5 minutes in an autoclave at 121°C in pH 7.8 Tris-EDTA-based Target Retrieval Solution buffer.**

**This antibody has been validated by Autostainer including Agilent/Dako - Autostainer Link 48, Bond RX-Lecia, and Roche-Ventana Discovery ULTRA. The detailed steps by Autostainer please refer to the [protocol](#).**

Not tested in other applications.

## Product Note

**Highly recommended for IHC-P in human tissues.**

## Properties

<b>Form</b>	Liquid
<b>Buffer</b>	PBS, 0.05% BSA (Please contact us for PBS only format)
<b>Preservative</b>	0.05% sodium azide
<b>Storage</b>	Store as concentrated solution. Centrifuge briefly prior to opening vial. For short-term storage (1-2 weeks), store at 4°C. For long-term storage, aliquot and store at -20°C or below. Avoid multiple freeze-thaw cycles.
<b>Concentration</b>	0.2 mg/ml (Please refer to the vial label for the specific concentration.)
<b>Immunogen</b>	Recombinant human CELA3B protein fragment (around aa 82-238)
<b>Purification</b>	Protein A/G purified



For full product information, images and publications, please visit our [website](#).

Date 2025 / 04 / 08 Page 1 of 2

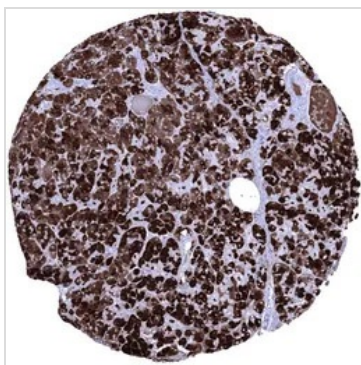
**Conjugation** Unconjugated

For laboratory research use only. Not for any clinical, therapeutic, or diagnostic use in humans or animals. Not for animal or human consumption.

**Note**

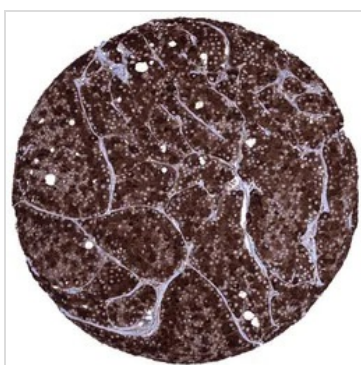
Purchasers shall not, and agree not to enable third parties to, analyze, copy, reverse engineer or otherwise attempt to determine the structure or sequence of the product.

DATA IMAGES



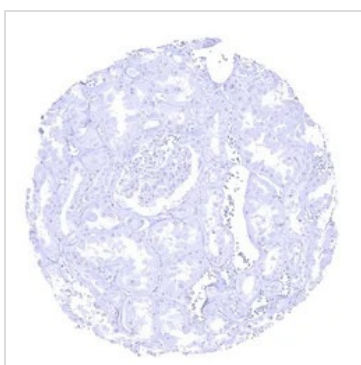
**GTX04445 IHC-P Image**

IHC-P analysis of human pancreas tissue using GTX04445 Elastase 3B antibody [MSVA-410M] HistoMAX™. Normal pancreas with strong elastase 3B positivity of acinar cells.



**GTX04445 IHC-P Image**

IHC-P analysis of human acinar cell carcinoma (ACC) from pancreas tissue using GTX04445 Elastase 3B antibody [MSVA-410M] HistoMAX™. Acinar cell carcinoma of the pancreas exhibiting a strong elastase 3B immunostaining of all tumor cells.



**GTX04445 IHC-P Image**

IHC-P analysis of human kidney tissue using GTX04445 Elastase 3B antibody [MSVA-410M] HistoMAX™. Elastase 3B immunostaining is absent in kidney tissue.



For full product information, images and publications, please visit our [website](#).