

LI-Cadherin antibody [MSVA-517M] HistoMAX™

Cat. No. GTX04447

| | |
|---------------------|------------|
| Host | Mouse |
| Clonality | Monoclonal |
| Isotype | IgG2b |
| Applications | IHC-P |
| Reactivity | Human |

Package

500 µl, 100 µl

PRODUCT

This antibody was validated on 76 different Normal Tissues by IHC-P.

Summary

[Go to Normal Tissue Gallery](#)

[Go to Cancer Tissue Gallery](#)

Applications

Application Note

*Optimal dilutions/concentrations should be determined by the researcher.

Suggested dilution Recommended dilution

IHC-P 1:100-1:200

Note : Manual staining : Heat-induced antigen retrieval for 5 minutes in an autoclave at 121°C in pH 7.8 Tris-EDTA-based Target Retrieval Solution buffer.

This antibody has been validated by Autostainer including Agilent/Dako - Autostainer Link 48, Bond RX-Lecia, and Roche-Ventana Discovery ULTRA. The detailed steps by Autostainer please refer to the [protocol](#).

Not tested in other applications.

Product Note **Highly recommended for IHC-P in human tissues.**

Properties

| | |
|----------------------|--|
| Form | Liquid |
| Buffer | PBS, 0.05% BSA (Please contact us for PBS only format) |
| Preservative | 0.05% sodium azide |
| Storage | Store as concentrated solution. Centrifuge briefly prior to opening vial. For short-term storage (1-2 weeks), store at 4°C. For long-term storage, aliquot and store at -20°C or below. Avoid multiple freeze-thaw cycles. |
| Concentration | 0.2 mg/ml (Please refer to the vial label for the specific concentration.) |
| Immunogen | Recombinant fragment (around aa 242-418) of human Cadherin 17 protein (CDH17) |
| Purification | Protein A/G purified |



For full product information, images and publications, please visit our [website](#).

Date 2025 / 04 / 17 Page 1 of 2

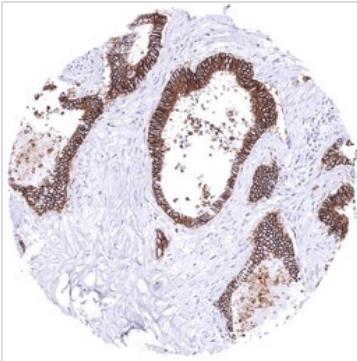
Conjugation

Unconjugated

Note

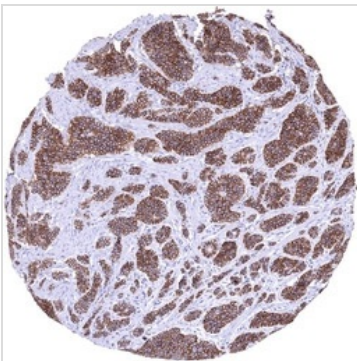
For laboratory research use only. Not for any clinical, therapeutic, or diagnostic use in humans or animals. Not for animal or human consumption.

Purchasers shall not, and agree not to enable third parties to, analyze, copy, reverse engineer or otherwise attempt to determine the structure or sequence of the product.

DATA IMAGES

GTX04447 IHC-P Image

IHC-P analysis of human colorectal adenocarcinoma (COAD) tissue using GTX04447 LI-Cadherin antibody [MSVA-517M] HistoMAX™.

Colon Colorectal adenocarcinoma with strong LI-Cadherin immunostaining of all tumor cells LI-Cadherin immunohistochemistry.


GTX04447 IHC-P Image

IHC-P analysis of human neuroendocrine Tumor (NET) from ileum tissue using GTX04447 LI-Cadherin antibody [MSVA-517M] HistoMAX™.

Ileum Neuroendocrine tumor with strong LI-Cadherin immunostaining of all tumor cells LI-Cadherin immunohistochemistry.


GTX04447 IHC-P Image

IHC-P analysis of human mucosa from rectum tissue using GTX04447 LI-Cadherin antibody [MSVA-517M] HistoMAX™.

A strong membranous LI-Cadherin staining occurs in all epithelial cells of the rectum mucosa LI-Cadherin immunohistochemistry.



For full product information, images and publications, please visit our [website](#).