

## Calbindin antibody [MSVA-471M] HistoMAX™

Cat. No. GTX04454

|              |            |
|--------------|------------|
| Host         | Mouse      |
| Clonality    | Monoclonal |
| Isotype      | IgG2c      |
| Applications | IHC-P      |
| Reactivity   | Human      |

## Package

500 µl, 100 µl

## PRODUCT

This antibody was validated on 76 different Normal Tissues by IHC-P.

## Summary

[Go to Normal Tissue Gallery](#)
[Go to Cancer Tissue Gallery](#)

## Applications

## Application Note

\*Optimal dilutions/concentrations should be determined by the researcher.

| Suggested dilution | Recommended dilution |
|--------------------|----------------------|
| IHC-P              | 1:50-1:100           |

**Note : Manual staining : Heat-induced antigen retrieval for 5 minutes in an autoclave at 121°C in pH 7.8 Tris-EDTA-based Target Retrieval Solution buffer.**

Not tested in other applications.

**Product Note**      **Highly recommended for IHC-P in human tissues.**

## Properties

|               |  |
|---------------|--|
| Form          | Liquid   |
| Buffer        | PBS, 0.05% BSA (Please contact us for PBS only format)   |
| Preservative  | 0.05% sodium azide   |
| Storage       | Store as concentrated solution. Centrifuge briefly prior to opening vial. For short-term storage (1-2 weeks), store at 4°C. For long-term storage, aliquot and store at -20°C or below. Avoid multiple freeze-thaw cycles. |
| Concentration | 0.2 mg/ml (Please refer to the vial label for the specific concentration.)   |
| Immunogen     | Recombinant fragment (around aa 7-96) of human CALB1 protein   |
| Purification  | Protein A/G purified   |
| Conjugation   | Unconjugated   |



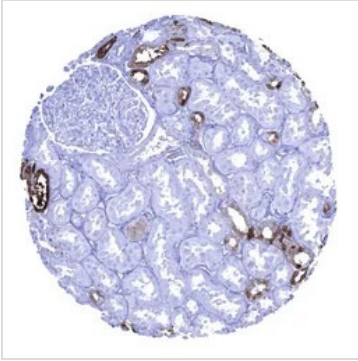
For full product information, images and publications, please visit our [website](#).

For laboratory research use only. Not for any clinical, therapeutic, or diagnostic use in humans or animals. Not for animal or human consumption.

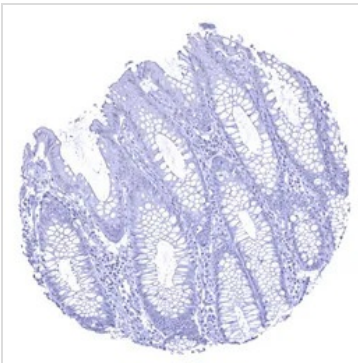
**Note**

Purchasers shall not, and agree not to enable third parties to, analyze, copy, reverse engineer or otherwise attempt to determine the structure or sequence of the product.

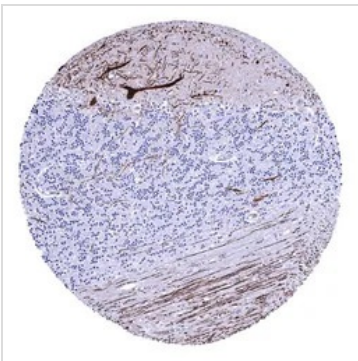
## DATA IMAGES

**GTX04454 IHC-P Image**

IHC-P analysis of human renal cortex tissue using GTX04454 Calbindin antibody [MSVA-471M] HistoMAX™. A strong cytoplasmic calbindin immunostaining occurs in a fraction of distal tubuli of the kidney.

**GTX04454 IHC-P Image**

IHC-P analysis of human mucosa from descending colon tissue using GTX04454 Calbindin antibody [MSVA-471M] HistoMAX™. Calbindin immunostaining is absent in all cells of the colon mucosa.

**GTX04454 IHC-P Image**

IHC-P analysis of human cerebellum tissue (molecular layer, Purkinje cell layer, granule cell layer, and white matter) using GTX04454 Calbindin antibody [MSVA-471M] HistoMAX™. A strong Calbindin staining of Purkinje cells and of associated axonal fibres is seen in the cerebrum.



For full product information, images and publications, please visit our [website](#).