

## CDH16 antibody [MSVA-516R] HistoMAX™

Cat. No. GTX04455

Host	Rabbit
Clonality	Monoclonal
Isotype	IgG
Applications	IHC-P
Reactivity	Human

## Package

500 µl, 100 µl

## PRODUCT

This antibody was validated on 76 different Normal Tissues by IHC-P.

## Summary

[Go to Normal Tissue Gallery](#)
[Go to Cancer Tissue Gallery](#)

## Applications

## Application Note

\*Optimal dilutions/concentrations should be determined by the researcher.

Suggested dilution	Recommended dilution
IHC-P	1:100-1:200

**Note : Manual staining : Heat-induced antigen retrieval for 5 minutes in an autoclave at 121°C in pH 7.8 Tris-EDTA-based Target Retrieval Solution buffer.**

**This antibody has been validated by Autostainer including Agilent/Dako - Autostainer Link 48 and BOND RX - Leica. The detailed steps by Autostainer please refer to the [protocol](#).**

Not tested in other applications.

**Product Note**      **Highly recommended for IHC-P in human tissues.**

## Properties

Form	Liquid
Buffer	PBS, 0.05% BSA (Please contact us for PBS only format)
Preservative	0.05% sodium azide
Storage	Store as concentrated solution. Centrifuge briefly prior to opening vial. For short-term storage (1-2 weeks), store at 4°C. For long-term storage, aliquot and store at -20°C or below. Avoid multiple freeze-thaw cycles.
Concentration	0.2 mg/ml (Please refer to the vial label for the specific concentration.)
Immunogen	Recombinant human full-length CDH16 protein
Purification	Protein A/G purified



For full product information, images and publications, please visit our [website](#).

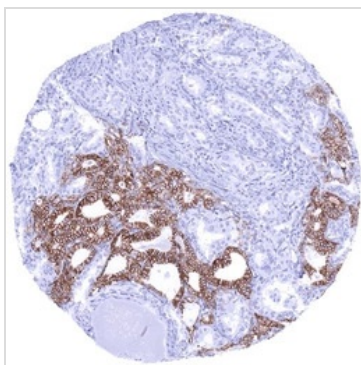
**Conjugation** Unconjugated

For laboratory research use only. Not for any clinical, therapeutic, or diagnostic use in humans or animals. Not for animal or human consumption.

**Note**

Purchasers shall not, and agree not to enable third parties to, analyze, copy, reverse engineer or otherwise attempt to determine the structure or sequence of the product.

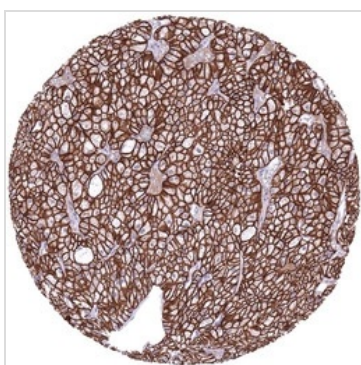
DATA IMAGES



**GTX04455 IHC-P Image**

IHC-P analysis of human thyroid carcinoma tissue using GTX04455 CDH16 antibody [MSVA-516R] HistoMAX™.

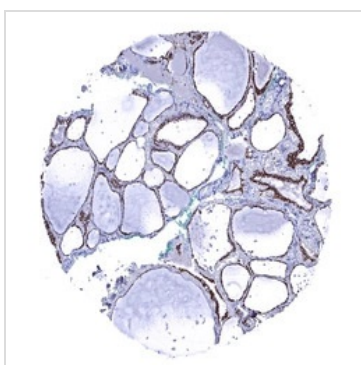
CDH16 negative papillary carcinoma invading CDH16 positive normal thyroid CDH16 immunohistochemistry.



**GTX04455 IHC-P Image**

IHC-P analysis of human chromophobe renal cell carcinoma (ChRCC) from kidney tissue using GTX04455 CDH16 antibody [MSVA-516R] HistoMAX™.

Chromophobe renal cell carcinoma with strong CDH16 immunostaining of tumor cells CDH16 immunohistochemistry.



**GTX04455 IHC-P Image**

IHC-P analysis of human thyroid gland tissue using GTX04455 CDH16 antibody [MSVA-516R] HistoMAX™. Strong membranous CDH16 staining of follicle cells CDH16 immunohistochemistry.



For full product information, images and publications, please visit our [website](#).