

Occludin antibody [MSVA-415M] HistoMAX™

Cat. No. GTX04461

Host	Mouse
Clonality	Monoclonal
Isotype	IgG1
Applications	IHC-P
Reactivity	Human

Package

500 µl, 100 µl

PRODUCT

This antibody was validated on 76 different Normal Tissues by IHC-P.

Summary

[Go to Normal Tissue Gallery](#)
[Go to Cancer Tissue Gallery](#)

Applications

Application Note

*Optimal dilutions/concentrations should be determined by the researcher.

Suggested dilution	Recommended dilution
IHC-P	1:100-1:200

Note : Manual staining : Heat-induced antigen retrieval for 5 minutes in an autoclave at 121°C in pH 7.8 Tris-EDTA-based Target Retrieval Solution buffer.

Not tested in other applications.

Product Note **Highly recommended for IHC-P in human tissues.**

Properties

Form	Liquid
Buffer	PBS, 0.05% BSA (Please contact us for PBS only format)
Preservative	0.05% sodium azide
Storage	Store as concentrated solution. Centrifuge briefly prior to opening vial. For short-term storage (1-2 weeks), store at 4°C. For long-term storage, aliquot and store at -20°C or below. Avoid multiple freeze-thaw cycles.
Concentration	0.2 mg/ml (Please refer to the vial label for the specific concentration.)
Immunogen	recombinant fragment of human Occludin protein (around aa 282-415)
Purification	Protein A/G purified
Conjugation	Unconjugated



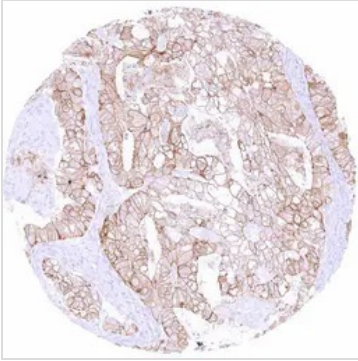
For full product information, images and publications, please visit our [website](#).

For laboratory research use only. Not for any clinical, therapeutic, or diagnostic use in humans or animals. Not for animal or human consumption.

Note

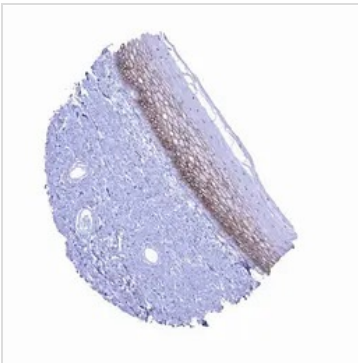
Purchasers shall not, and agree not to enable third parties to, analyze, copy, reverse engineer or otherwise attempt to determine the structure or sequence of the product.

DATA IMAGES

**GTX04461 IHC-P Image**

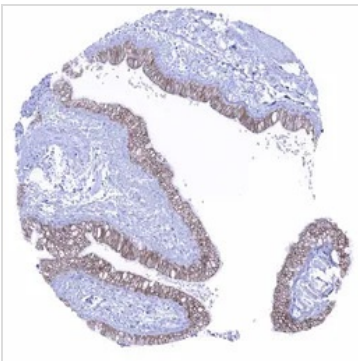
IHC-P analysis of human ovarian clear cell carcinoma (OCCC) tissue using GTX04461 Occludin antibody [MSVA-415M] HistoMAX™.

Clear cell ovarian carcinoma with moderate occludin staining of tumor cells.

**GTX04461 IHC-P Image**

IHC-P analysis of human skin tissue using GTX04461 Occludin antibody [MSVA-415M] HistoMAX™.

In squamous epithelium occludin positivity is regularly seen but staining is reduced or absent in basal and superficial cell layers scaled.

**GTX04461 IHC-P Image**

IHC-P analysis of human lung tissue using GTX04461 Occludin antibody [MSVA-415M] HistoMAX™.

Membranous occludin immunostaining of respiratory epithelium scaled.



For full product information, images and publications, please visit our [website](#).