

## Estrogen Receptor alpha antibody [MSVA-564R] HistoMAX™

Cat. No. GTX04474

Host	Rabbit
Clonality	Monoclonal
Isotype	IgG
Applications	IHC-P
Reactivity	Human

## Package

500 µl, 100 µl

## PRODUCT

This antibody was validated on 76 different Normal Tissues by IHC-P.

## Summary

[Go to Normal Tissue Gallery](#)
[Go to Cancer Tissue Gallery](#)

## Applications

## Application Note

\*Optimal dilutions/concentrations should be determined by the researcher.

Suggested dilution	Recommended dilution
IHC-P	1:100-1:200

**Note : Manual staining : Heat-induced antigen retrieval for 5 minutes in an autoclave at 121°C in pH 7.8 Tris-EDTA-based Target Retrieval Solution buffer.**

**This antibody has been validated by Autostainer including Agilent/Dako - Autostainer Link 48 and BOND RX - Leica. The detailed steps by Autostainer please refer to the [protocol](#).**

Not tested in other applications.

**Product Note**      **Highly recommended for IHC-P in human tissues.**

## Properties

Form	Liquid
Buffer	PBS, 0.05% BSA (Please contact us for PBS only format)
Preservative	0.05% sodium azide
Storage	Store as concentrated solution. Centrifuge briefly prior to opening vial. For short-term storage (1-2 weeks), store at 4°C. For long-term storage, aliquot and store at -20°C or below. Avoid multiple freeze-thaw cycles.
Concentration	0.2 mg/ml (Please refer to the vial label for the specific concentration.)
Immunogen	Recombinant fragment (around aa495-595) of human ER alpha protein
Purification	Protein A/G purified



For full product information, images and publications, please visit our [website](#).

Date 2025 / 04 / 08 Page 1 of 2

**Conjugation**

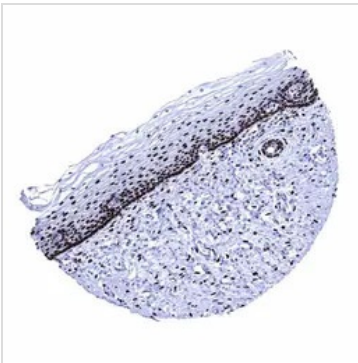
Unconjugated

**Note**

For laboratory research use only. Not for any clinical, therapeutic, or diagnostic use in humans or animals. Not for animal or human consumption.

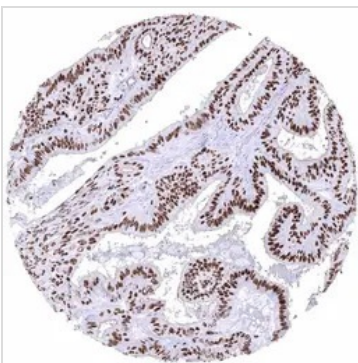
Purchasers shall not, and agree not to enable third parties to, analyze, copy, reverse engineer or otherwise attempt to determine the structure or sequence of the product.

## DATA IMAGES

**GTX04474 IHC-P Image**

IHC-P analysis of human ectocervix tissue using GTX04474 Estrogen Receptor alpha antibody [MSVA-564R] HistoMAX™.

An intense estrogen receptor alpha staining is seen in stromal cells and in the majority of squamous epithelial cells of the uterine ectocervix.

**GTX04474 IHC-P Image**

IHC-P analysis of human endometrioid carcinoma (EC) tissue using GTX04474 Estrogen Receptor alpha antibody [MSVA-564R] HistoMAX™.

Endometrioid carcinoma of the ovary with strong estrogen receptor alpha immunostaining of all tumor cells.

**GTX04474 IHC-P Image**

IHC-P analysis of human endometrium (proliferation) tissue using GTX04474 Estrogen Receptor alpha antibody [MSVA-564R] HistoMAX™.

Among normal tissues highest levels of estrogen receptor alpha immunostaining occur in epithelial and stromal cells of the endometrium.



For full product information, images and publications, please visit our [website](#).