

## Her2 / ErbB2 antibody

**Cat. No. GTX100509**

<b>Host</b>	Rabbit
<b>Clonality</b>	Polyclonal
<b>Isotype</b>	IgG
<b>Applications</b>	WB, IHC-P
<b>Reactivity</b>	Human

References ( 4 )

★★★★★ Review ( 2 )

Package

100 µl, 25 µl

## PRODUCT

## Summary

HER2 antibody recognizes HER2 protein, also known as proto-oncogene Neu or ERBB2 (predicted molecular weight of 138 kDa). HER2 is a member of the human epidermal growth factor receptor (EGFR) family of receptor tyrosine kinases. It shares 50% sequence identity with EGFR protein, but involves different signaling pathways. HER2 can heterodimerize with EGFR protein or homodimerize when it is present in high concentrations.

## Applications

## Application Note

\*Optimal dilutions/concentrations should be determined by the researcher.

Suggested dilution	Recommended dilution
WB	1:500-1:20000
IHC-P	1:100-1:1000

Not tested in other applications.

**Calculated MW** 138 kDa. ([Note](#))

## Properties

<b>Form</b>	Liquid
<b>Buffer</b>	PBS, 1% BSA, 20% Glycerol
<b>Preservative</b>	0.01% Thimerosal
<b>Storage</b>	Store as concentrated solution. Centrifuge briefly prior to opening vial. For short-term storage (1-2 weeks), store at 4°C. For long-term storage, aliquot and store at -20°C or below. Avoid multiple freeze-thaw cycles.
<b>Concentration</b>	0.07 mg/ml (Please refer to the vial label for the specific concentration.)
<b>Immunogen</b>	Recombinant protein encompassing a sequence within the Intracellular domain of human Her2 / ErbB2. The exact sequence is proprietary.
<b>Purification</b>	Purified by antigen-affinity chromatography.
<b>Conjugation</b>	Unconjugated



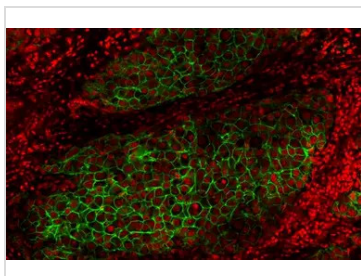
For full product information, images and publications, please visit our [website](#).

For laboratory research use only. Not for any clinical, therapeutic, or diagnostic use in humans or animals. Not for animal or human consumption.

**Note**

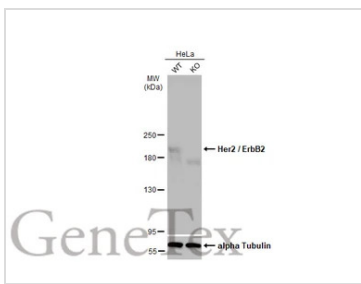
Purchasers shall not, and agree not to enable third parties to, analyze, copy, reverse engineer or otherwise attempt to determine the structure or sequence of the product.

DATA IMAGES



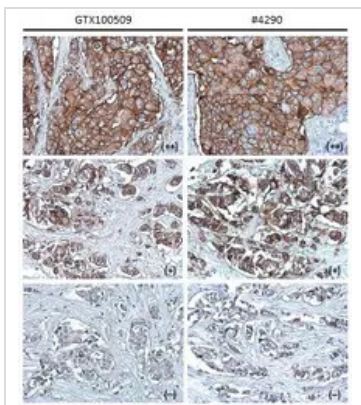
**GTX100509 IHC-P Image**

Her2 / ErbB2 antibody detects Her2 / ErbB2 protein at cell membrane by immunohistochemical analysis.  
 Sample: Paraffin-embedded human breast carcinoma.  
 Green: Her2 / ErbB2 stained by Her2 / ErbB2 antibody (GTX100509) diluted at 1:50.



**GTX100509 WB Image**

Wild-type (WT) and Her2 / ErbB2 knockout (KO) HeLa cell extracts (30 µg) were separated by 5% SDS-PAGE, and the membrane was blotted with Her2 / ErbB2 antibody (GTX100509) diluted at 1:5000. The HRP-conjugated anti-rabbit IgG antibody (GTX213110-01) was used to detect the primary antibody, and the signal was developed with Trident femto Western HRP Substrate.



**GTX100509 IHC-P Image**

Her2 / ErbB2 antibody [C2C3], C-term detects Her2 / ErbB2 protein at cell membrane in human breast carcinoma by immunohistochemical analysis.  
 Sample: Strong positive (++) , low positive (+) and negative tissue slides cores assessed using Quantitative Digital Pathology.  
 Her2 / ErbB2 antibody [C2C3], C-term (GTX100509) diluted at 1:500, and competitor's antibody (CST#4290) diluted at 1:100.

Antigen Retrieval: Trilogy™ (EDTA based, pH 8.0) buffer, 15min  
 \*The competitor is not affiliated with GeneTex and does not endorse this product.



For full product information, images and publications, please visit our [website](#).