

## NFkB p65 antibody

**Cat. No. GTX102090**

<b>Host</b>	Rabbit
<b>Clonality</b>	Polyclonal
<b>Isotype</b>	IgG
<b>Applications</b>	WB, ICC/IF, IHC-P, IHC-Fr, IP, ChIP assay
<b>Reactivity</b>	Human, Mouse, Rat

References ( 74 )

★★★★☆ Review ( 4 )

Package

100 µl, 25 µl

## Applications

**Application Note**

\*Optimal dilutions/concentrations should be determined by the researcher.

Suggested dilution	Recommended dilution
WB	1:500-1:10000
ICC/IF	1:100-1:1000
IHC-P	1:100-1:1000
IHC-Fr	Assay dependent
IP	Assay dependent
ChIP assay	Assay dependent

Not tested in other applications.

**Calculated MW** 60 kDa. ( [Note](#) )**Product Note** IP/MS validation was supported by references (PMID:30377380)

## Properties

<b>Form</b>	Liquid
<b>Buffer</b>	PBS, 1% BSA, 20% Glycerol
<b>Preservative</b>	0.025% ProClin 300
<b>Storage</b>	Store as concentrated solution. Centrifuge briefly prior to opening vial. For short-term storage (1-2 weeks), store at 4°C. For long-term storage, aliquot and store at -20°C or below. Avoid multiple freeze-thaw cycles.
<b>Concentration</b>	0.49 mg/ml (Please refer to the vial label for the specific concentration.)
<b>Immunogen</b>	Recombinant protein encompassing a sequence within the center region of human NFkB p65. The exact sequence is proprietary.
<b>Purification</b>	Purified by antigen-affinity chromatography.

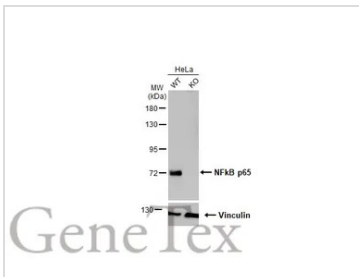
For full product information, images and publications, please visit our [website](#).

**Conjugation** Unconjugated

For laboratory research use only. Not for any clinical, therapeutic, or diagnostic use in humans or animals. Not for animal or human consumption.

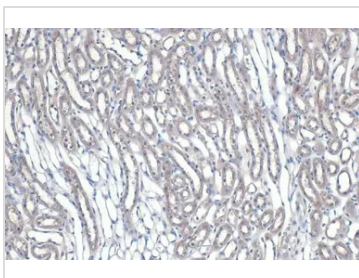
**Note** Purchasers shall not, and agree not to enable third parties to, analyze, copy, reverse engineer or otherwise attempt to determine the structure or sequence of the product.

DATA IMAGES



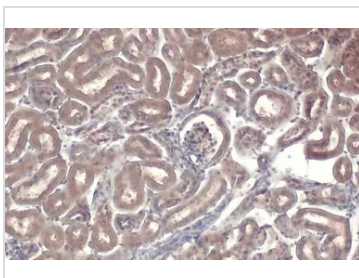
**GTX102090 WB Image**

Wild-type (WT) and RELA knockout (KO) HeLa cell extracts (30 μg) were separated by 7.5% SDS-PAGE, and the membrane was blotted with NfκB p65 antibody (GTX102090) diluted at 1:1000. The HRP-conjugated anti-rabbit IgG antibody (GTX213110-01) was used to detect the primary antibody.



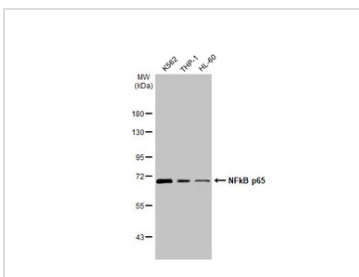
**GTX102090 IHC-P Image**

NfκB p65 antibody detects NfκB p65 protein at cytoplasm and nucleus by immunohistochemical analysis. Sample: Paraffin-embedded mouse kidney. NfκB p65 stained by NfκB p65 antibody (GTX102090) diluted at 1:165. Antigen Retrieval: Citrate buffer, pH 6.0, 15 min



**GTX102090 IHC-P Image**

NfκB p65 antibody detects NfκB p65 protein at cytoplasm and nucleus by immunohistochemical analysis. Sample: Paraffin-embedded mouse kidney. NfκB p65 stained by NfκB p65 antibody (GTX102090) diluted at 1:500. Antigen Retrieval: Citrate buffer, pH 6.0, 15 min



**GTX102090 WB Image**

Various whole cell extracts (30 μg) were separated by 7.5% SDS-PAGE, and the membrane was blotted with NfκB p65 antibody (GTX102090) diluted at 1:1000. The HRP-conjugated anti-rabbit IgG antibody (GTX213110-01) was used to detect the primary antibody.



For full product information, images and publications, please visit our [website](#).