

GOLGA5 antibody [N2C2], Internal

Cat. No. GTX104255

| | |
|---------------------|-----------------------|
| Host | Rabbit |
| Clonality | Polyclonal |
| Isotype | IgG |
| Applications | WB, ICC/IF, IHC-P |
| Reactivity | Human, Mouse, Hamster |

References (5)

★★★★☆ Review (2)

Package

100 µl, 25 µl

Applications

Application Note

*Optimal dilutions/concentrations should be determined by the researcher.

| Suggested dilution | Recommended dilution |
|--------------------|----------------------|
| WB | 1:500-1:3000 |
| ICC/IF | 1:100-1:1000 |
| IHC-P | 1:100-1:1000 |

Not tested in other applications.

Calculated MW 83 kDa. ([Note](#))

Properties

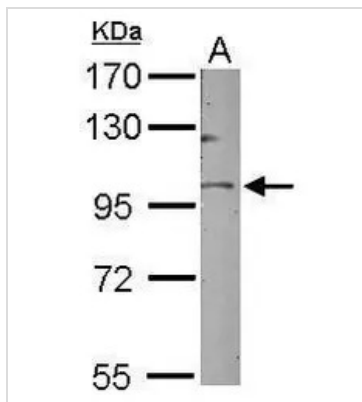
| | |
|----------------------|--|
| Form | Liquid |
| Buffer | 0.1M Tris, 0.1M Glycine, 10% Glycerol |
| Preservative | 0.01% Thimerosal |
| Storage | Store as concentrated solution. Centrifuge briefly prior to opening vial. For short-term storage (1-2 weeks), store at 4°C. For long-term storage, aliquot and store at -20°C or below. Avoid multiple freeze-thaw cycles. |
| Concentration | 1 mg/ml (Please refer to the vial label for the specific concentration.) |
| Immunogen | Recombinant protein encompassing a sequence within the center region of human GOLGA5. The exact sequence is proprietary. |
| Purification | Purified by antigen-affinity chromatography. |
| Conjugation | Unconjugated |
| Note | For laboratory research use only. Not for any clinical, therapeutic, or diagnostic use in humans or animals. Not for animal or human consumption. Purchasers shall not, and agree not to enable third parties to, analyze, copy, reverse engineer or otherwise attempt to determine the structure or sequence of the product. |



For full product information, images and publications, please visit our [website](#).

Date 2025 / 04 / 03 Page 1 of 2

DATA IMAGES

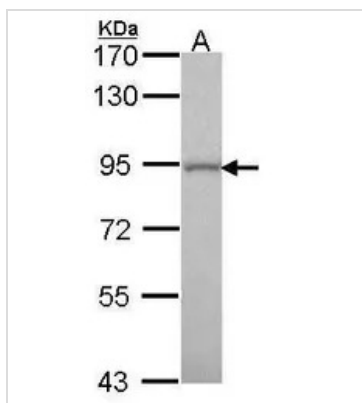
**GTX104255 WB Image**

Sample (50 ug of whole cell lysate)

A: Mouse brain

7.5% SDS PAGE

GTX104255 diluted at 1:1000

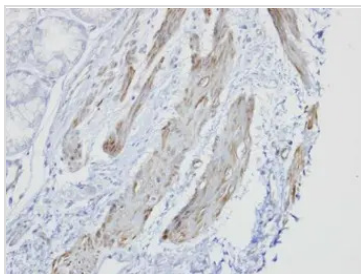
**GTX104255 WB Image**

Sample (30 ug of whole cell lysate)

A: A549

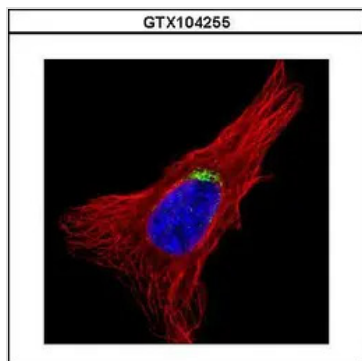
7.5% SDS PAGE

GTX104255 diluted at 1:1000

**GTX104255 IHC-P Image**

Immunohistochemical analysis of paraffin-embedded human smooth muscle, using GOLGA5(GTX104255) antibody at 1:100 dilution.

Antigen Retrieval: Trilogy™ (EDTA based, pH 8.0) buffer, 15min

**GTX104255 ICC/IF Image**

Confocal immunofluorescence analysis (Olympus FV10i) of methanol-fixed HeLa, using GOLGA5(GTX104255) antibody (Green) at 1:500 dilution. Alpha-tubulin filaments were labeled with GTX11304 (Red) at 1:2500.



For full product information, images and publications, please visit our [website](#).