

IL6 antibody

Cat. No. GTX110527

Host	Rabbit
Clonality	Polyclonal
Isotype	IgG
Applications	WB, IHC-P, IHC-Fr
Reactivity	Human, Mouse, Rat

References (55)

★★★★☆ Review (6)

Package

100 µl, 25 µl

Applications

Application Note

*Optimal dilutions/concentrations should be determined by the researcher.

Suggested dilution	Recommended dilution
WB	1:500-1:3000
IHC-P	1:100-1:1000
IHC-Fr	Assay dependent

Not tested in other applications.

Calculated MW 24 kDa. ([Note](#))

Properties

Form	Liquid
Buffer	PBS, 20% Glycerol
Preservative	0.025% ProClin 300
Storage	Store as concentrated solution. Centrifuge briefly prior to opening vial. For short-term storage (1-2 weeks), store at 4°C. For long-term storage, aliquot and store at -20°C or below. Avoid multiple freeze-thaw cycles.
Concentration	0.72 mg/ml (Please refer to the vial label for the specific concentration.)
Immunogen	Full length human IL6 Recombinant protein.
Purification	Purified by antigen-affinity chromatography.
Conjugation	Unconjugated

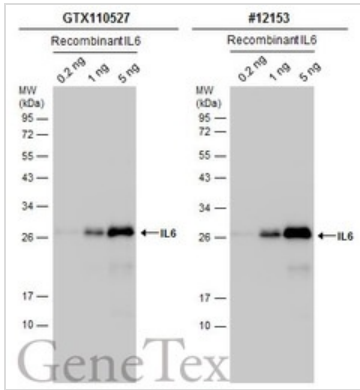
Note

For laboratory research use only. Not for any clinical, therapeutic, or diagnostic use in humans or animals. Not for animal or human consumption.

Purchasers shall not, and agree not to enable third parties to, analyze, copy, reverse engineer or otherwise attempt to determine the structure or sequence of the product.

For full product information, images and publications, please visit our [website](#).

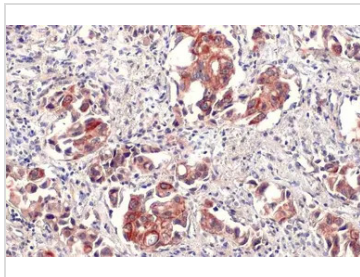
DATA IMAGES



GTX110527 WB Image

IL6 antibody detects IL6 recombinant protein by western blot analysis. Various amounts of protein were separated by 12% SDS-PAGE, and the membranes were blotted with IL6 antibody (GTX110527) diluted at 1:2250 and competitor's antibody (CST#12153) diluted by 1:2000.

*The competitor is not affiliated with GeneTex and does not endorse this product.



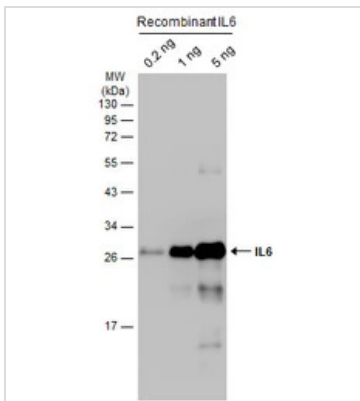
GTX110527 IHC-P Image

IL6 antibody detects IL6 protein at cell membrane and cytoplasm by immunohistochemical analysis.

Sample: Paraffin-embedded human lung cancer.

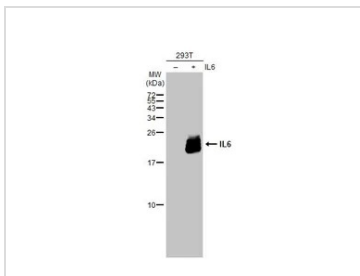
IL6 stained by IL6 antibody (GTX110527) diluted at 1:500.

Antigen Retrieval: Citrate buffer, pH 6.0, 15 min



GTX110527 WB Image

Recombinant IL6 were separated by 12% SDS-PAGE, and the membrane was blotted with IL6 antibody (GTX110527) diluted at 1:2000. The HRP-conjugated anti-rabbit IgG antibody (GTX213110-01) was used to detect the primary antibody.



GTX110527 WB Image

Non-transfected (-) and transfected (+) 293T whole cell extracts (30 µg) were separated by 12% SDS-PAGE, and the membrane was blotted with IL6 antibody (GTX110527) diluted at 1:1500. The HRP-conjugated anti-rabbit IgG antibody (GTX213110-01) was used to detect the primary antibody.



For full product information, images and publications, please visit our [website](#).