

TRAF6 antibody [N2C2], Internal

Cat. No. GTX113029

Host	Rabbit
Clonality	Polyclonal
Isotype	IgG
Applications	WB, ICC/IF, IHC-P, IP
Reactivity	Human, Mouse, Rat

References (8)

Package

100 µl, 25 µl

Applications

Application Note

*Optimal dilutions/concentrations should be determined by the researcher.

Suggested dilution	Recommended dilution
WB	1:500-1:3000
ICC/IF	1:100-1:1000
IHC-P	1:100-1:1000
IP	1:100-1:500

Not tested in other applications.

Calculated MW 60 kDa. ([Note](#))

Properties

Form	Liquid
Buffer	PBS, 20% Glycerol
Preservative	0.025% ProClin 300
Storage	Store as concentrated solution. Centrifuge briefly prior to opening vial. For short-term storage (1-2 weeks), store at 4°C. For long-term storage, aliquot and store at -20°C or below. Avoid multiple freeze-thaw cycles.
Concentration	3.39 mg/ml (Please refer to the vial label for the specific concentration.)
Immunogen	Recombinant protein encompassing a sequence within the center region of human TRAF6. The exact sequence is proprietary.
Purification	Purified by antigen-affinity chromatography.
Conjugation	Unconjugated

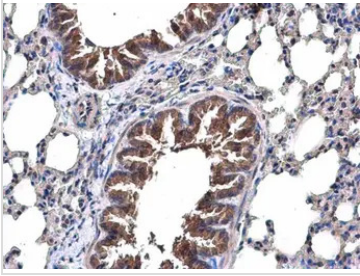


For full product information, images and publications, please visit our [website](#).

For laboratory research use only. Not for any clinical, therapeutic, or diagnostic use in humans or animals. Not for animal or human consumption.

Note
Purchasers shall not, and agree not to enable third parties to, analyze, copy, reverse engineer or otherwise attempt to determine the structure or sequence of the product.

DATA IMAGES

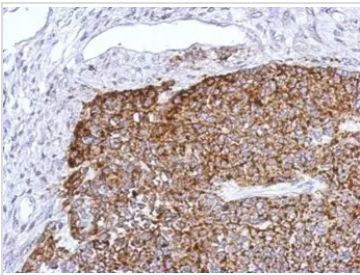
**GTX113029 IHC-P Image**

TRAF6 antibody [N2C2], Internal detects TRAF6 protein at cytoplasm in mouse lung by immunohistochemical analysis.

Sample: Paraffin-embedded mouse lung.

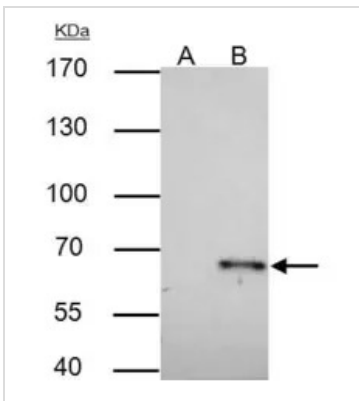
TRAF6 antibody [N2C2], Internal (GTX113029) diluted at 1:500.

Antigen Retrieval: Citrate buffer, pH 6.0, 15 min

**GTX113029 IHC-P Image**

Immunohistochemical analysis of paraffin-embedded 59T xenograft, using TRAF6(GTX113029) antibody at 1:500 dilution.

Antigen Retrieval: Trilogy™ (EDTA based, pH 8.0) buffer, 15min

**GTX113029 IP Image**

TRAF6 antibody [N2C2], Internal immunoprecipitates TRAF6 protein in IP experiments.

IP samples: K562 whole cell extract

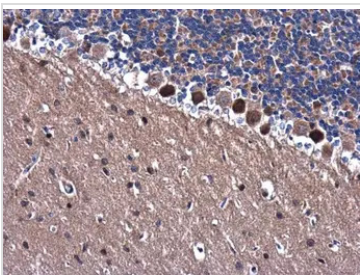
A. Control with 4 µg of preimmune Rabbit IgG

B. Immunoprecipitation of TRAF6 protein by 4 µg TRAF6 antibody [N2C2], Internal (GTX113029)

7.5 % SDS-PAGE

The immunoprecipitated TRAF6 protein was detected by TRAF6 antibody [N2C2], Internal (GTX113029) diluted at 1:500.

[EasyBlot anti-rabbit IgG (GTX221666-01) was used as a secondary reagent]

**GTX113029 IHC-P Image**

TRAF6 antibody [N2C2], Internal detects TRAF6 protein at cytoplasm in rat brain by immunohistochemical analysis.

Sample: Paraffin-embedded rat brain.

TRAF6 antibody [N2C2], Internal (GTX113029) diluted at 1:500.

Antigen Retrieval: Citrate buffer, pH 6.0, 15 min



For full product information, images and publications, please visit our [website](#).