

Coxsackie Adenovirus Receptor antibody

Cat. No. GTX118382

Host	Rabbit
Clonality	Polyclonal
Isotype	IgG
Applications	WB, ICC/IF, IHC-P, IP
Reactivity	Human, Rat

References (1)

★★★★☆ Review (1)

Package

100 µl, 25 µl

Applications

Application Note

*Optimal dilutions/concentrations should be determined by the researcher.

Suggested dilution	Recommended dilution
WB	1:500-1:3000
ICC/IF	Assay dependent
IHC-P	1:100-1:1000
IP	1:100-1:500

Not tested in other applications.

Calculated MW 40 kDa. ([Note](#))

Properties

Form	Liquid
Buffer	PBS, 20% Glycerol
Preservative	0.025% ProClin 300
Storage	Store as concentrated solution. Centrifuge briefly prior to opening vial. For short-term storage (1-2 weeks), store at 4°C. For long-term storage, aliquot and store at -20°C or below. Avoid multiple freeze-thaw cycles.
Concentration	1.05 mg/ml (Please refer to the vial label for the specific concentration.)
Immunogen	Recombinant protein encompassing a sequence within the center region of human Coxsackie Adenovirus Receptor. The exact sequence is proprietary.
Purification	Purified by antigen-affinity chromatography.
Conjugation	Unconjugated

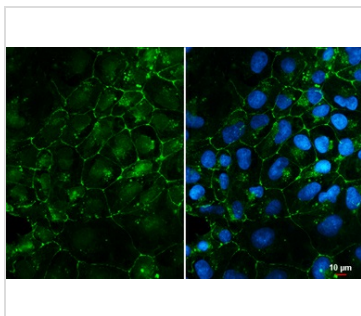
For full product information, images and publications, please visit our [website](#).

For laboratory research use only. Not for any clinical, therapeutic, or diagnostic use in humans or animals. Not for animal or human consumption.

Note

Purchasers shall not, and agree not to enable third parties to, analyze, copy, reverse engineer or otherwise attempt to determine the structure or sequence of the product.

DATA IMAGES



GTX118382 ICC/IF Image

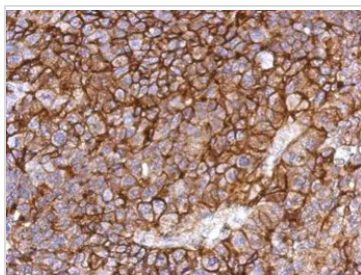
Cocksackie Adenovirus Receptor antibody detects Cocksackie Adenovirus Receptor protein at cell membrane by immunofluorescent analysis.

Sample: NT2D1 cells were fixed in 4% paraformaldehyde at RT for 15 min.

Green: Cocksackie Adenovirus Receptor stained by Cocksackie Adenovirus Receptor antibody (GTX118382) diluted at 1:500.

Blue: Fluoroshield with DAPI (GTX30920).

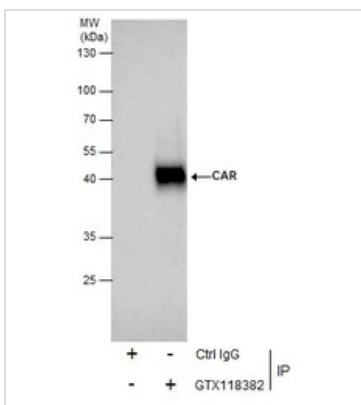
Scale bar= 10 µm.



GTX118382 IHC-P Image

Immunohistochemical analysis of paraffin-embedded PC13 xenograft, using CAR(GTX118382) antibody at 1:500 dilution.

Antigen Retrieval: Trilogy™ (EDTA based, pH 8.0) buffer, 15min

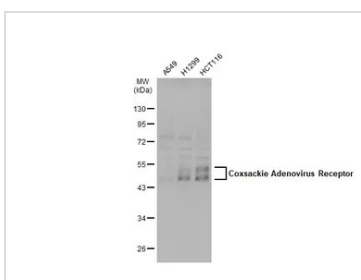


GTX118382 IP Image

Immunoprecipitation of CAR protein from HeLa whole cell extracts using 5 µg of CAR antibody (GTX118382).

Western blot analysis was performed using CAR antibody (GTX118382).

EasyBlot anti-Rabbit IgG (GTX221666-01) was used as a secondary reagent.



GTX118382 WB Image

Various whole cell extracts (30 µg) were separated by 10% SDS-PAGE, and the membrane was blotted with Cocksackie Adenovirus Receptor antibody (GTX118382) diluted at 1:1000. The HRP-conjugated anti-rabbit IgG antibody (GTX213110-01) was used to detect the primary antibody, and the signal was developed with Trident ECL plus-Enhanced.



For full product information, images and publications, please visit our [website](#).