

## Influenza A virus PB1 protein antibody

**Cat. No. GTX125923**

<b>Host</b>	Rabbit
<b>Clonality</b>	Polyclonal
<b>Isotype</b>	IgG
<b>Applications</b>	WB, ICC/IF
<b>Reactivity</b>	Influenza A virus

References ( 62 )

★★★★★ Review ( 2 )

Package

100 µl, 25 µl

## Applications

**Application Note**

\*Optimal dilutions/concentrations should be determined by the researcher.

Suggested dilution	Recommended dilution
WB	1:500-1:3000
ICC/IF	1:100-1:1000

Not tested in other applications.

**Calculated MW** 87 kDa. ( [Note](#) )

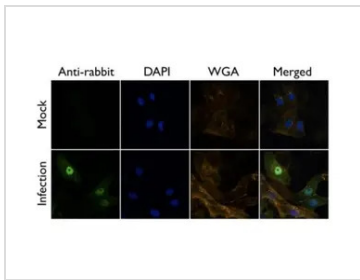
## Properties

<b>Form</b>	Liquid
<b>Buffer</b>	PBS, 1% BSA, 20% Glycerol
<b>Preservative</b>	0.025% ProClin 300
<b>Storage</b>	Store as concentrated solution. Centrifuge briefly prior to opening vial. For short-term storage (1-2 weeks), store at 4°C. For long-term storage, aliquot and store at -20°C or below. Avoid multiple freeze-thaw cycles.
<b>Concentration</b>	0.2 mg/ml (Please refer to the vial label for the specific concentration.)
<b>Immunogen</b>	Recombinant protein encompassing a sequence within the N-terminus region of Influenza A virus PB1 (A/Puerto Rico/8/1934(H1N1)). The exact sequence is proprietary.
<b>Purification</b>	Purified by antigen-affinity chromatography.
<b>Conjugation</b>	Unconjugated
<b>Note</b>	For laboratory research use only. Not for any clinical, therapeutic, or diagnostic use in humans or animals. Not for animal or human consumption.  Purchasers shall not, and agree not to enable third parties to, analyze, copy, reverse engineer or otherwise attempt to determine the structure or sequence of the product.



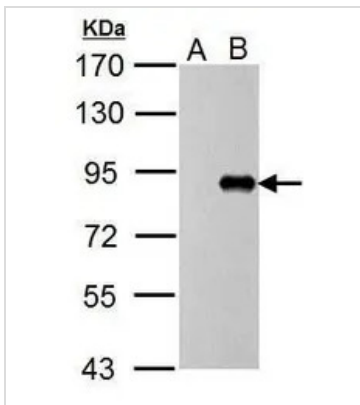
For full product information, images and publications, please visit our [website](#).

DATA IMAGES



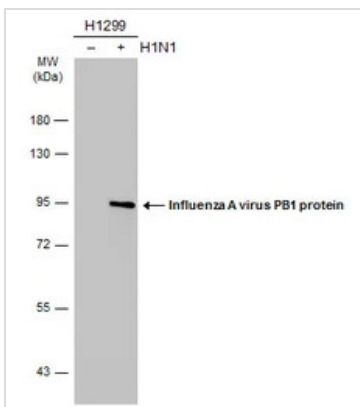
**GTX125923 ICC/IF Image**

Influenza A Virus PB1 antibody detects PB1 protein at by immunofluorescent analysis.  
 Sample: A/WSN/33 infected Vero cells were fixed in 4% paraformaldehyde at RT for 20 min.  
 Green: PB1 protein stained by Influenza A Virus PB1 antibody (GTX125923) diluted at 1:500.  
 Blue: DAPI staining.  
 Yellow: WGA life stained at 37°C, 30 min.



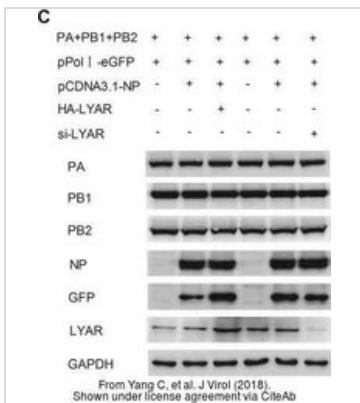
**GTX125923 WB Image**

Influenza A Virus PB1 antibody detects protein by western blot analysis.  
 A. 5 µg DF1 whole cell lysate/extract (untreated)  
 B. 5 µg DF1 whole cell lysate/extract (WSN virus treatment for 10hr)  
 7.5% SDS-PAGE  
 Influenza A Virus PB1 antibody (GTX125923) dilution: 1:1000  
 The HRP-conjugated anti-rabbit IgG antibody (GTX213110-01) was used to detect the primary antibody.



**GTX125923 WB Image**

Non-infected (-) and infected (+) H1299 whole cell extracts (5 µg) were separated by 7.5% SDS-PAGE, and the membrane was blotted with Influenza A virus PB1 protein antibody (GTX125923) diluted at 1:1000. The HRP-conjugated anti-rabbit IgG antibody (GTX213110-01) was used to detect the primary antibody.



**GTX125923 WB Image**

The data was published in the journal J Virol in 2018. [PMID: 30209172](https://pubmed.ncbi.nlm.nih.gov/30209172/)



For full product information, images and publications, please visit our [website](https://www.genetex.com).