

Influenza A virus M1 (matrix protein) antibody

Cat. No. GTX125928

Host	Rabbit
Clonality	Polyclonal
Isotype	IgG
Applications	WB, ICC/IF, IHC-Fr
Reactivity	Influenza A virus

References (58)

★★★★★ Review (2)

Package

100 µl, 25 µl

Applications

Application Note

*Optimal dilutions/concentrations should be determined by the researcher.

Suggested dilution	Recommended dilution
WB	1:1000-1:10000
ICC/IF	Assay dependent
IHC-Fr	Assay dependent

Not tested in other applications.

Calculated MW 28 kDa. ([Note](#))

Properties

Form	Liquid
Buffer	PBS, 20% Glycerol
Preservative	0.025% ProClin 300
Storage	Store as concentrated solution. Centrifuge briefly prior to opening vial. For short-term storage (1-2 weeks), store at 4°C. For long-term storage, aliquot and store at -20°C or below. Avoid multiple freeze-thaw cycles.
Concentration	1.76 mg/ml (Please refer to the vial label for the specific concentration.)
Immunogen	Recombinant protein encompassing a sequence within the C-terminus region of Influenza A virus M1 (matrix protein) (A/Puerto Rico/8/1934(H1N1)). The exact sequence is proprietary.
Purification	Purified by antigen-affinity chromatography.
Conjugation	Unconjugated

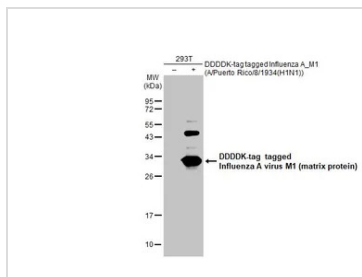
Note

For laboratory research use only. Not for any clinical, therapeutic, or diagnostic use in humans or animals. Not for animal or human consumption.

Purchasers shall not, and agree not to enable third parties to, analyze, copy, reverse engineer or otherwise attempt to determine the structure or sequence of the product.

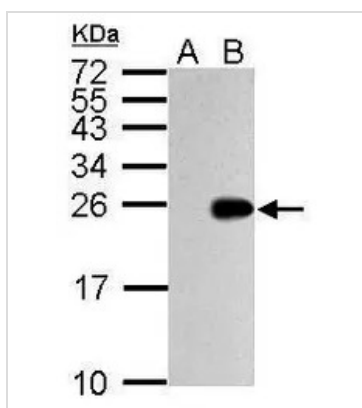
For full product information, images and publications, please visit our [website](#).

DATA IMAGES



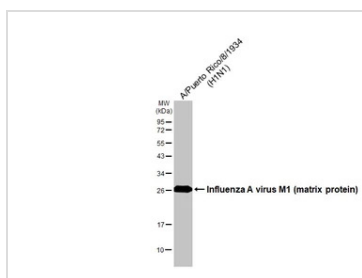
GTX125928 WB Image

Non-transfected (-) and transfected (+) 293T whole cell extracts (30 µg) were separated by 12% SDS-PAGE, and the membrane was blotted with Influenza A virus M1 (matrix protein) antibody (GTX125928) diluted at 1:5000. The HRP-conjugated anti-rabbit IgG antibody (GTX213110-01) was used to detect the primary antibody.



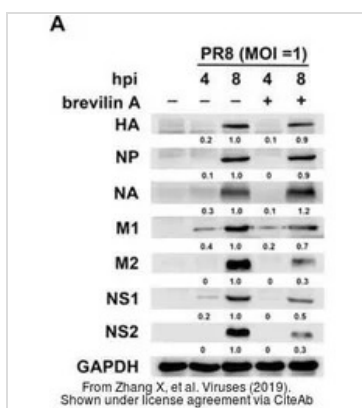
GTX125928 WB Image

Sample (50 µg of whole cell lysate)
 A: mock DF-1 cell lysates
 B: WSN-infected DF-1 cell lysates
 15% SDS PAGE
 GTX125928 diluted at 1:5000
 The HRP-conjugated anti-rabbit IgG antibody (GTX213110-01) was used to detect the primary antibody.



GTX125928 WB Image

Influenza A (H1N1) viral lysate (0.5 µg) was separated by 12% SDS-PAGE, and the membrane was blotted with Influenza A virus M1 (matrix protein) antibody (GTX125928) diluted at 1:5000. The HRP-conjugated anti-rabbit IgG antibody (GTX213110-01) was used to detect the primary antibody.



GTX125928 WB Image

The data was published in the journal *Viruses* in 2019. [PMID: 31500389](https://pubmed.ncbi.nlm.nih.gov/31500389/)



For full product information, images and publications, please visit our [website](https://www.genetex.com).