

## Influenza A virus M2 (matrix protein) antibody

**Cat. No. GTX125951**

<b>Host</b>	Rabbit
<b>Clonality</b>	Polyclonal
<b>Isotype</b>	IgG
<b>Applications</b>	WB, ICC/IF, EM
<b>Reactivity</b>	Influenza A virus

References ( 37 )

★★★★★ Review ( 1 )

Package

100 µl, 25 µl

## Applications

**Application Note**

\*Optimal dilutions/concentrations should be determined by the researcher.

Suggested dilution	Recommended dilution
WB	1:1000-1:10000
ICC/IF	1:100-1:1000
EM	Assay dependent

Not tested in other applications.

**Calculated MW** 11 kDa. ( [Note](#) )

## Properties

<b>Form</b>	Liquid
<b>Buffer</b>	PBS, 20% Glycerol
<b>Preservative</b>	0.025% ProClin 300
<b>Storage</b>	Store as concentrated solution. Centrifuge briefly prior to opening vial. For short-term storage (1-2 weeks), store at 4°C. For long-term storage, aliquot and store at -20°C or below. Avoid multiple freeze-thaw cycles.
<b>Concentration</b>	0.61 mg/ml (Please refer to the vial label for the specific concentration.)
<b>Immunogen</b>	Recombinant protein corresponding to Influenza A virus M2 (matrix protein) (A/Puerto Rico/8/1934(H1N1)). The exact sequence is proprietary.
<b>Purification</b>	Purified by antigen-affinity chromatography.
<b>Conjugation</b>	Unconjugated

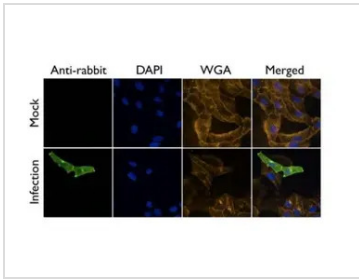
**Note**

For laboratory research use only. Not for any clinical, therapeutic, or diagnostic use in humans or animals. Not for animal or human consumption.

Purchasers shall not, and agree not to enable third parties to, analyze, copy, reverse engineer or otherwise attempt to determine the structure or sequence of the product.

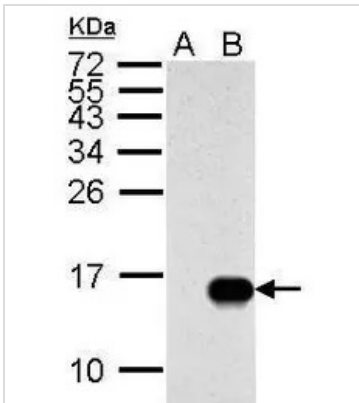
For full product information, images and publications, please visit our [website](#).

DATA IMAGES



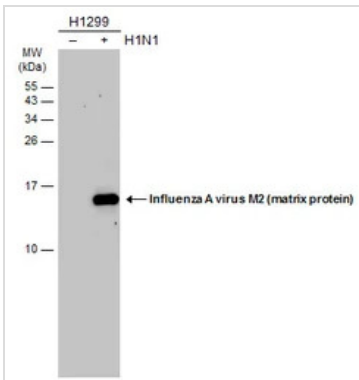
**GTX125951 ICC/IF Image**

Influenza A Virus M2 antibody detects M2 protein at by immunofluorescent analysis.  
 Sample: A/WSN/33 infected Vero cells were fixed in 4% paraformaldehyde at RT for 20 min.  
 Green: M2 protein stained by Influenza A Virus M2 antibody (GTX125951) diluted at 1:500.  
 Blue: DAPI staining.  
 Yellow: WGA life stained at 37°C, 30 min.



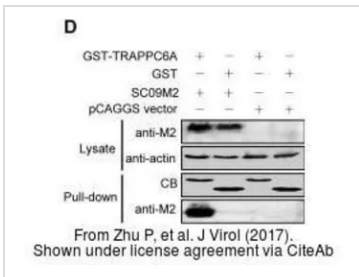
**GTX125951 WB Image**

Sample (50 µg of whole cell lysate)  
 A: mock DF-1 cell lysates  
 B: WSN-infected DF-1 cell lysates  
 15% SDS PAGE  
 GTX125951 diluted at 1:5000  
 The HRP-conjugated anti-rabbit IgG antibody (GTX213110-01) was used to detect the primary antibody.



**GTX125951 WB Image**

Non-infected (-) and infected (+) H1299 whole cell extracts (15 µg) were separated by 15% SDS-PAGE, and the membrane was blotted with Influenza A virus M2 (matrix protein) antibody (GTX125951) diluted at 1:5000. The HRP-conjugated anti-rabbit IgG antibody (GTX213110-01) was used to detect the primary antibody.



**GTX125951 WB Image**

The data was published in the journal J Virol in 2017. [PMID: 27795429](https://pubmed.ncbi.nlm.nih.gov/27795429/)



For full product information, images and publications, please visit our [website](https://www.genetex.com).