

Influenza A virus NS2 / NEP antibody

Cat. No. GTX125953

Host	Rabbit
Clonality	Polyclonal
Isotype	IgG
Applications	WB, ICC/IF, IP
Reactivity	Influenza A virus

References (17)

Package

100 µl, 25 µl

Applications

Application Note

*Optimal dilutions/concentrations should be determined by the researcher.

Suggested dilution	Recommended dilution
WB	1:1000-1:10000
ICC/IF	Assay dependent
IP	Assay dependent

Not tested in other applications.

Calculated MW 14 kDa. ([Note](#))

Properties

Form	Liquid
Buffer	PBS, 20% Glycerol
Preservative	0.01% Thimerosal
Storage	Store as concentrated solution. Centrifuge briefly prior to opening vial. For short-term storage (1-2 weeks), store at 4°C. For long-term storage, aliquot and store at -20°C or below. Avoid multiple freeze-thaw cycles.
Concentration	1 mg/ml (Please refer to the vial label for the specific concentration.)
Immunogen	Recombinant protein encompassing a sequence within the N-terminus region of Influenza A virus NS2 (nonstructural protein) (A/Puerto Rico/8/1934(H1N1)). The exact sequence is proprietary.
Purification	Purified by antigen-affinity chromatography.
Conjugation	Unconjugated

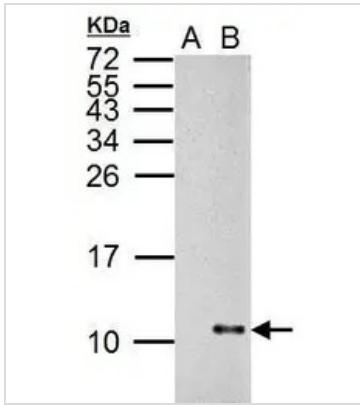
Note

For laboratory research use only. Not for any clinical, therapeutic, or diagnostic use in humans or animals. Not for animal or human consumption.

Purchasers shall not, and agree not to enable third parties to, analyze, copy, reverse engineer or otherwise attempt to determine the structure or sequence of the product.

For full product information, images and publications, please visit our [website](#).

DATA IMAGES



GTX125953 WB Image

Sample (5 µg of whole cell lysate)

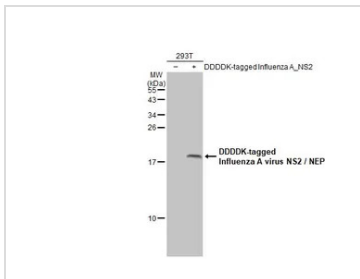
A: DF1

B: WSN virus infected DF1 10 hr

15% SDS PAGE

GTX125953 diluted at 1:5000

The HRP-conjugated anti-rabbit IgG antibody (GTX213110-01) was used to detect the primary antibody.

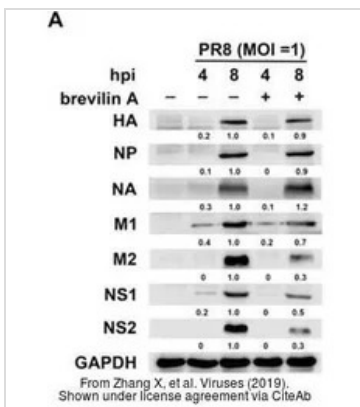


GTX125953 WB Image

Non-transfected (-) and transfected (+) 293T whole cell extracts (30 µg) were separated by 15% SDS-PAGE,

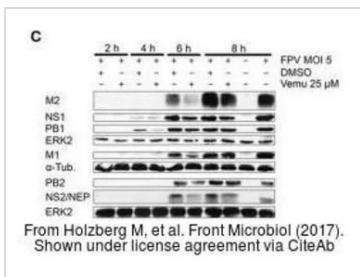
and the membrane was blotted with Influenza A virus NS2 / NEP antibody (GTX125953) diluted at 1:5000.

The HRP-conjugated anti-rabbit IgG antibody (GTX213110-01) was used to detect the primary antibody.



GTX125953 WB Image

The data was published in the journal *Viruses* in 2019. [PMID: 31500389](https://pubmed.ncbi.nlm.nih.gov/31500389/)



GTX125953 WB Image

The data was published in the journal *Front Microbiol* in 2017. [PMID: 29312159](https://pubmed.ncbi.nlm.nih.gov/29312159/)



For full product information, images and publications, please visit our [website](https://www.genetex.com).