

Influenza A virus H1N1 NA (Neuraminidase) antibody

Cat. No. GTX125974

Host	Rabbit
Clonality	Polyclonal
Isotype	IgG
Applications	WB, ICC/IF
Reactivity	Influenza A virus (H1N1)

References (18)

Package

100 µl, 25 µl

Applications

Application Note

*Optimal dilutions/concentrations should be determined by the researcher.

Suggested dilution	Recommended dilution
WB	1:500-1:3000
ICC/IF	Assay dependent

Not tested in other applications.

Calculated MW 50 kDa. ([Note](#))

Properties

Form	Liquid
Buffer	PBS, 1% BSA, 20% Glycerol
Preservative	0.025% ProClin 300
Storage	Store as concentrated solution. Centrifuge briefly prior to opening vial. For short-term storage (1-2 weeks), store at 4°C. For long-term storage, aliquot and store at -20°C or below. Avoid multiple freeze-thaw cycles.
Concentration	0.11 mg/ml (Please refer to the vial label for the specific concentration.)
Immunogen	Recombinant protein encompassing a sequence within the N-terminus region of Influenza A virus H1N1 NA (Neuraminidase) (A/WSN/1933(H1N1)). The exact sequence is proprietary.
Purification	Purified by antigen-affinity chromatography.
Conjugation	Unconjugated

Note

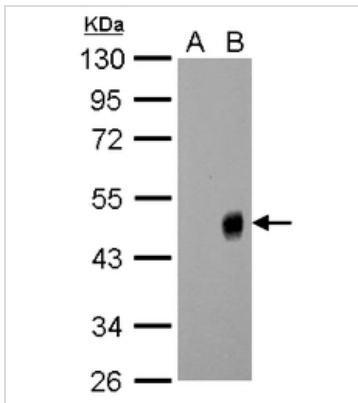
For laboratory research use only. Not for any clinical, therapeutic, or diagnostic use in humans or animals. Not for animal or human consumption.

Purchasers shall not, and agree not to enable third parties to, analyze, copy, reverse engineer or otherwise attempt to determine the structure or sequence of the product.



For full product information, images and publications, please visit our [website](#).

DATA IMAGES



GTX125974 WB Image

Influenza A Virus H1N1 Neuraminidase (NA) antibody detects Influenza A Virus H1N1 Neuraminidase protein by western blot analysis.

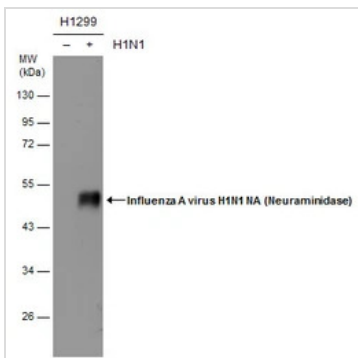
A. 5 µg DF-1 whole cell lysate/extract

B. 5 µg whole cell lysate/extract WSN virus infected DF-1 cells

10% SDS-PAGE

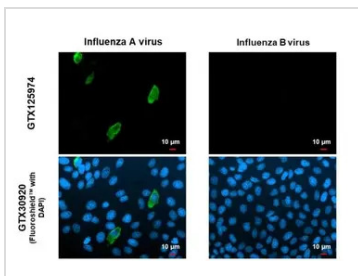
Influenza A Virus H1N1 Neuraminidase (NA) antibody (GTX125974) dilution: 1:1000

The HRP-conjugated anti-rabbit IgG antibody (GTX213110-01) was used to detect the primary antibody.



GTX125974 WB Image

Non-infected (-) and infected (+) H1299 whole cell extracts (5 µg) were separated by 10% SDS-PAGE, and the membrane was blotted with Influenza A virus H1N1 NA (Neuraminidase) antibody (GTX125974) diluted at 1:1000.

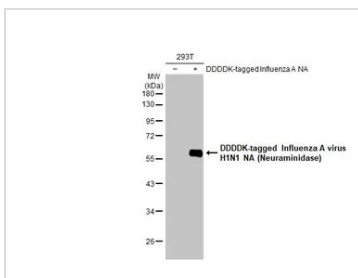


GTX125974 ICC/IF Image

Immunofluorescent analysis of influenza virus infected cells using Influenza A virus Nucleoprotein antibody (GTX125974).

Sample: Influenza A and B Virus infected cells slide.

Green: Influenza A virus Nucleoprotein antibody (GTX125974) diluted at 1:100.



GTX125974 WB Image

Non-transfected (-) and transfected (+) 293T whole cell extracts (30 µg) were separated by 10% SDS-PAGE, and the membrane was blotted with Influenza A virus H1N1 NA (Neuraminidase) antibody (GTX125974) diluted at 1:1000. The HRP-conjugated anti-rabbit IgG antibody (GTX213110-01) was used to detect the primary antibody.



For full product information, images and publications, please visit our [website](https://www.genetex.com).