

Influenza A virus NS1 (nonstructural protein) antibody

Cat. No. GTX125990

Host	Rabbit
Clonality	Polyclonal
Isotype	IgG
Applications	WB, ICC/IF, IHC-P
Reactivity	Influenza A virus

References (52)

★★★★★ Review (1)

Package

100 µl, 25 µl

Applications

Application Note

*Optimal dilutions/concentrations should be determined by the researcher.

Suggested dilution	Recommended dilution
WB	1:500-1:3000
ICC/IF	1:100-1:1000
IHC-P	Assay dependent

Not tested in other applications.

Properties

Form	Liquid
Buffer	PBS, 20% Glycerol
Preservative	0.025% ProClin 300
Storage	Store as concentrated solution. Centrifuge briefly prior to opening vial. For short-term storage (1-2 weeks), store at 4°C. For long-term storage, aliquot and store at -20°C or below. Avoid multiple freeze-thaw cycles.
Concentration	0.93 mg/ml (Please refer to the vial label for the specific concentration.)
Immunogen	Recombinant protein of Influenza A virus NS1 (nonstructural protein) (A/WSN/1933(H1N1)). The exact sequence is proprietary.
Purification	Purified by antigen-affinity chromatography.
Conjugation	Unconjugated

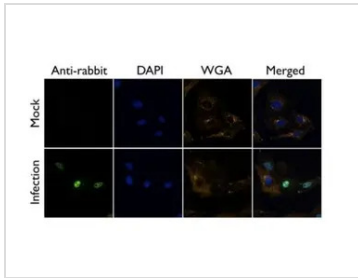
Note

For laboratory research use only. Not for any clinical, therapeutic, or diagnostic use in humans or animals. Not for animal or human consumption.

Purchasers shall not, and agree not to enable third parties to, analyze, copy, reverse engineer or otherwise attempt to determine the structure or sequence of the product.



For full product information, images and publications, please visit our [website](#).

DATA IMAGES

GTx125990 ICC/IF Image

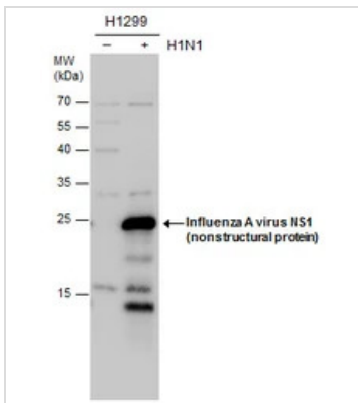
Influenza A Virus NS1 antibody detects NS1 (H1N1) protein at by immunofluorescent analysis.

Sample: A/WSN/33 infected Vero cells were fixed in 4% paraformaldehyde at RT for 20 min.

Green: NS1 (H1N1) protein stained by Influenza A Virus NS1 antibody (GTx125990) diluted at 1:500.

Blue: DAPI staining.

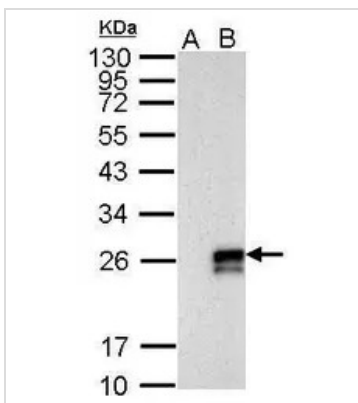
Yellow: WGA life stained at 37°C, 30 min.


GTx125990 WB Image

Influenza A virus NS1 (nonstructural protein) antibody detects Influenza A virus NS1 (nonstructural protein) protein by western blot analysis. Non-infected (-) and Influenza A virus (H1N1)-infected (+) H1299 whole cell extracts (30 µg) were separated by 12% SDS-PAGE, and the membrane was blotted with Influenza A

virus NS1 (nonstructural protein) antibody (GTx125990) diluted at 1:1000. The HRP-conjugated anti-rabbit

IgG antibody (GTx213110-01) was used to detect the primary antibody.


GTx125990 WB Image

Sample (10 µg of whole cell lysate)

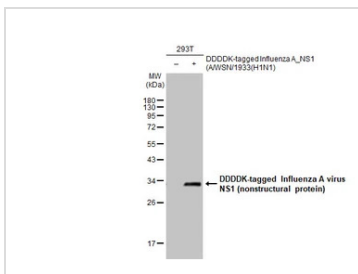
A: mock DF-1 cell lysates

B: WSN-infected DF-1 cell lysates

12% SDS PAGE

GTx125990 diluted at 1:1000

The HRP-conjugated anti-rabbit IgG antibody (GTx213110-01) was used to detect the primary antibody.


GTx125990 WB Image

Non-transfected (-) and transfected (+) 293T whole cell extracts (30 µg) were separated by 12% SDS-PAGE, and the membrane was blotted with Influenza A virus NS1 (nonstructural protein) antibody (GTx125990)

diluted at 1:1000. The HRP-conjugated anti-rabbit IgG antibody (GTx213110-01) was used to detect the primary antibody.



For full product information, images and publications, please visit our [website](http://www.genetex.com).