

PRRS virus M protein antibody

Cat. No. GTX129063

| | |
|---------------------|-------------------|
| Host | Rabbit |
| Clonality | Polyclonal |
| Isotype | IgG |
| Applications | WB, ICC/IF, IHC-P |
| Reactivity | PRRS virus |

References (2)

Package

100 µl, 25 µl

Applications

Application Note

*Optimal dilutions/concentrations should be determined by the researcher.

| Suggested dilution | Recommended dilution |
|--------------------|----------------------|
| WB | 1:500-1:3000 |
| ICC/IF | 1:100-1:1000 |
| IHC-P | 1:100-1:1000 |

Not tested in other applications.

Properties

| | |
|----------------------|--|
| Form | Liquid |
| Buffer | PBS, 20% Glycerol |
| Preservative | 0.025% ProClin 300 |
| Storage | Store as concentrated solution. Centrifuge briefly prior to opening vial. For short-term storage (1-2 weeks), store at 4°C. For long-term storage, aliquot and store at -20°C or below. Avoid multiple freeze-thaw cycles. |
| Concentration | 0.23 mg/ml (Please refer to the vial label for the specific concentration.) |
| Immunogen | Recombinant protein encompassing a sequence within the center region of PRRS virus M protein (PRRS virus (strain VR-2332)). The exact sequence is proprietary. |
| Purification | Purified by antigen-affinity chromatography. |
| Conjugation | Unconjugated |

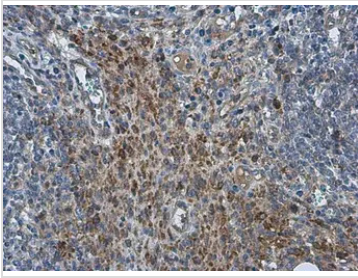
Note

For laboratory research use only. Not for any clinical, therapeutic, or diagnostic use in humans or animals. Not for animal or human consumption.

Purchasers shall not, and agree not to enable third parties to, analyze, copy, reverse engineer or otherwise attempt to determine the structure or sequence of the product.

For full product information, images and publications, please visit our [website](#).

DATA IMAGES



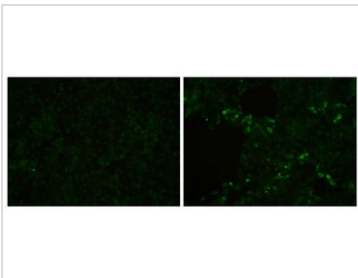
GTX129063 IHC-P Image

PRRS virus M protein antibody detects PRRSV at macrophages in PRRS virus-infected swine lymph node by immunohistochemical analysis.

Sample: Paraffin-embedded PRRS virus-infected swine lymph node.

PRRS virus M protein antibody (GTX129063) diluted at 1:500.

Antigen Retrieval: Citrate buffer, pH 6.0, 15 min

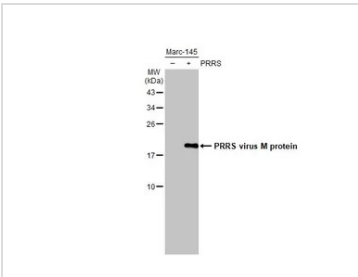


GTX129063 ICC/IF Image

Immunofluorescent analysis of PRRSV infected Marc-145 cells using PRRS virus M protein antibody .

Sample: Marc-145 cells mock (left) and infected with North American (type II) genotypes PRRSV (right, MOI=1) were fixed in 4% formaldehyde at 4oC for 10 min and permeabilized with 0.1% Triton X-100 on ice for 5 min.

Green: PRRS virus M protein stained by PRRS virus M protein antibody (GTX129063) diluted at 1:500.



GTX129063 WB Image

Non-infected (-) and infected (+) Marc-145 whole cell extracts (5 µg) were separated by 15% SDS-PAGE, and the membrane was blotted with PRRS virus M protein antibody (GTX129063) diluted at 1:1000. The HRP-conjugated anti-rabbit IgG antibody (GTX213110-01) was used to detect the primary antibody, and the signal was developed with Trident ECL plus-Enhanced.



For full product information, images and publications, please visit our [website](#).