

Hepatitis C virus NS3 protein antibody

Cat. No. GTX131269

Host	Rabbit
Clonality	Polyclonal
Isotype	IgG
Applications	WB, IHC-P
Reactivity	Hepatitis C virus

References (1)

Package

100 µl, 25 µl

Applications

Application Note

*Optimal dilutions/concentrations should be determined by the researcher.

Suggested dilution	Recommended dilution
WB	1:500-1:3000
IHC-P	Assay dependent

Not tested in other applications.

Properties

Form	Liquid
Buffer	PBS, 20% Glycerol
Preservative	0.025% ProClin 300
Storage	Store as concentrated solution. Centrifuge briefly prior to opening vial. For short-term storage (1-2 weeks), store at 4°C. For long-term storage, aliquot and store at -20°C or below. Avoid multiple freeze-thaw cycles.
Concentration	0.83 mg/ml (Please refer to the vial label for the specific concentration.)
Immunogen	Recombinant protein encompassing a sequence within the center region of Hepatitis C virus NS3 protein (HCV 2a (strain JFH-1)). The exact sequence is proprietary.
Purification	Purified by antigen-affinity chromatography.
Conjugation	Unconjugated

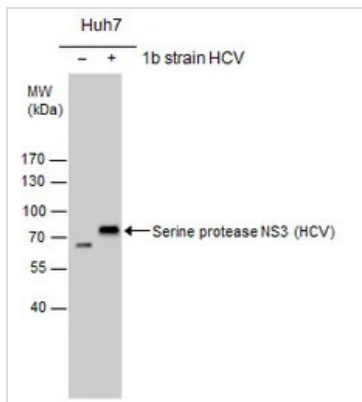
Note

For laboratory research use only. Not for any clinical, therapeutic, or diagnostic use in humans or animals. Not for animal or human consumption.

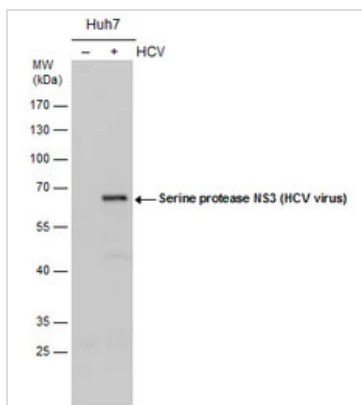
Purchasers shall not, and agree not to enable third parties to, analyze, copy, reverse engineer or otherwise attempt to determine the structure or sequence of the product.

For full product information, images and publications, please visit our [website](#).

DATA IMAGES

**GTX131269 WB Image**

Serine protease NS3(HCV virus) antibody detects Serine protease NS3 protein by western blot analysis. Non-transfected (-) and Serine protease NS3-transfected (+) Huh7 whole cell extracts (30µg) were separated by 7.5% SDS-PAGE, and the membrane was blotted with Serine protease NS3(HCV virus) antibody (GTX131269) at a dilution of 1:2000

**GTX131269 WB Image**

Serine protease NS3 (HCV virus) antibody detects Serine protease NS3 (HCV virus) protein by western blot analysis. Un-infected (-) and infected (+, HCV infection for) Huh7 whole cell extracts (20 µg) were separated by 10% SDS-PAGE, and the membrane was blotted with Serine protease NS3 (HCV virus) antibody (GTX131269) diluted by 1:1000.



For full product information, images and publications, please visit our [website](#).