

West Nile virus NS3 protein antibody

Cat. No. GTX131955

Host	Rabbit
Clonality	Polyclonal
Isotype	IgG
Applications	WB, ICC/IF
Reactivity	West Nile virus

References (3)

★★★★☆ Review (2)

Package

100 µl, 25 µl

Applications

Application Note

*Optimal dilutions/concentrations should be determined by the researcher.

Suggested dilution	Recommended dilution
WB	1:500-1:3000
ICC/IF	Assay dependent

Not tested in other applications.

Properties

Form	Liquid
Buffer	PBS, 20% Glycerol
Preservative	0.025% ProClin 300
Storage	Store as concentrated solution. Centrifuge briefly prior to opening vial. For short-term storage (1-2 weeks), store at 4°C. For long-term storage, aliquot and store at -20°C or below. Avoid multiple freeze-thaw cycles.
Concentration	0.94 mg/ml (Please refer to the vial label for the specific concentration.)
Immunogen	Recombinant protein encompassing a sequence within the N-terminus region of West Nile virus NS3 protein (West Nile virus (strain NY99-IC)). The exact sequence is proprietary.
Purification	Purified by antigen-affinity chromatography.
Conjugation	Unconjugated

Note

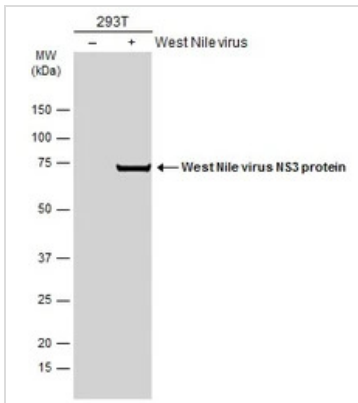
For laboratory research use only. Not for any clinical, therapeutic, or diagnostic use in humans or animals. Not for animal or human consumption.

Purchasers shall not, and agree not to enable third parties to, analyze, copy, reverse engineer or otherwise attempt to determine the structure or sequence of the product.

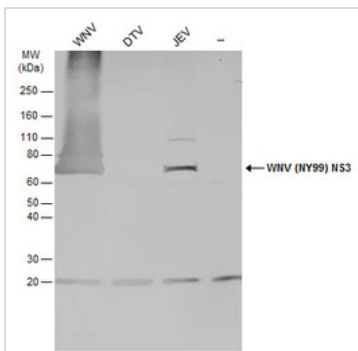


For full product information, images and publications, please visit our [website](#).

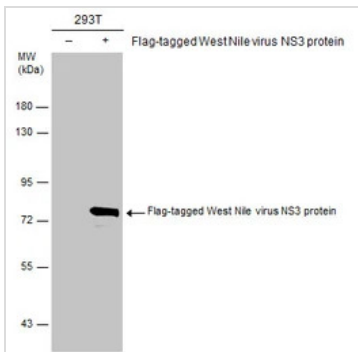
Date 2025 / 04 / 15 Page 1 of 2

DATA IMAGES

GTX131955 WB Image

Non-infected (–) and infected (+) 293T whole cell extracts were separated by 4-20% SDS-PAGE, and the membrane was blotted with West Nile virus NS3 protein antibody (GTX131955) diluted at 1:1500. The HRP-conjugated anti-rabbit IgG antibody (GTX213110-01) was used to detect the primary antibody.


GTX131955 WB Image

Non-infected (–) and infected Vero whole cell extracts were separated by SDS-PAGE, and the membrane was blotted with West Nile virus NS3 protein antibody (GTX131955).


GTX131955 WB Image

Non-transfected (–) and transfected (+) 293T whole cell extracts (30 µg) were separated by 7.5% SDS-PAGE, and the membrane was blotted with West Nile virus NS3 protein antibody (GTX131955) diluted at 1:5000.



For full product information, images and publications, please visit our [website](https://www.genetex.com).