

Enterovirus 71 VP1 antibody

Cat. No. GTX132338

Host	Rabbit
Clonality	Polyclonal
Isotype	IgG
Applications	WB, ICC/IF, IHC-P
Reactivity	Enterovirus 71

References (15)

Package

100 µl, 25 µl

Applications

Application Note

*Optimal dilutions/concentrations should be determined by the researcher.

Suggested dilution	Recommended dilution
WB	1:1000-1:10000
ICC/IF	1:100-1:1000
IHC-P	1:100-1:1000

Not tested in other applications.

Product Note

This antibody was raised against Enterovirus 71 VP1. It recognizes Enterovirus 71 VP1 signal and shows cross-react with Coxsackievirus A16 VP1. However, it does not cross-react with Enterovirus D68 VP1.

Properties

Form	Liquid
Buffer	PBS, 20% Glycerol
Preservative	0.025% ProClin 300
Storage	Store as concentrated solution. Centrifuge briefly prior to opening vial. For short-term storage (1-2 weeks), store at 4°C. For long-term storage, aliquot and store at -20°C or below. Avoid multiple freeze-thaw cycles.
Concentration	1 mg/ml (Please refer to the vial label for the specific concentration.)
Immunogen	Carrier-protein conjugated synthetic peptide encompassing a sequence within the center region of Enterovirus 71 VP1 (EV71 virus (strain USA/BrCr/1970)). The exact sequence is proprietary.
Purification	Purified by antigen-affinity chromatography.
Conjugation	Unconjugated

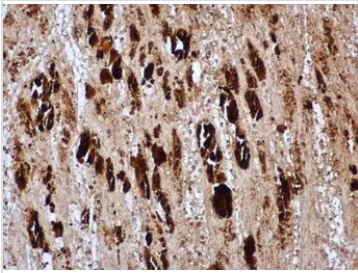


For full product information, images and publications, please visit our [website](#).

For laboratory research use only. Not for any clinical, therapeutic, or diagnostic use in humans or animals. Not for animal or human consumption.

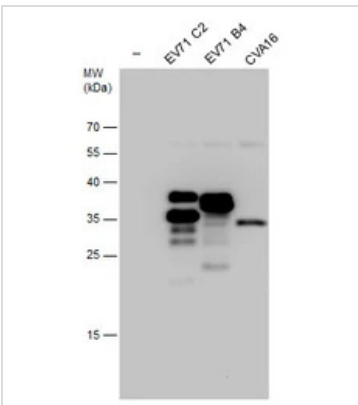
Note
 Purchasers shall not, and agree not to enable third parties to, analyze, copy, reverse engineer or otherwise attempt to determine the structure or sequence of the product.

DATA IMAGES



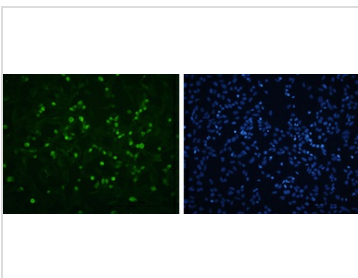
GTX132338 IHC-P Image

EV71 VP1 antibody detects EV71 VP1 protein in EV71 infected mouse skeletal muscle by immunohistochemical analysis. Sample: Paraffin-embedded EV71 infected mouse skeletal muscle. EV71 VP1 antibody [GTX132338] diluted at 1:500
 Antigen Retrieval: Citrate buffer



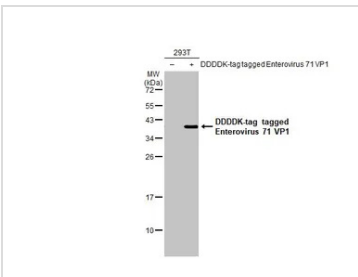
GTX132338 WB Image

Non-infected (-) and infected RD whole cell extracts (30 µg) were separated by 12% SDS-PAGE, and the membrane was blotted with Enterovirus 71 VP1 antibody (GTX132338) diluted at 1:5000. The HRP-conjugated anti-rabbit IgG antibody (GTX213110-01) was used to detect the primary antibody.



GTX132338 ICC/IF Image

EV71 VP1 antibody detects EV71 VP1 protein by immunofluorescent analysis. Sample: RD cells infected with EV71 were fixed in 4% paraformaldehyde. Green: EV71 VP1 protein stained by EV71 VP1 antibody (GTX132338) diluted at 1:100. Blue: DAPI staining. Scale bar = 500 µm.



GTX132338 WB Image

Non-transfected (-) and transfected (+) 293T whole cell extracts (30 µg) were separated by 12% SDS-PAGE, and the membrane was blotted with Enterovirus 71 VP1 antibody (GTX132338) diluted at 1:5000. The HRP-conjugated anti-rabbit IgG antibody (GTX213110-01) was used to detect the primary antibody.



For full product information, images and publications, please visit our [website](#).