

# Enterovirus 71 VP3 antibody

**Cat. No. GTX132341**

<b>Host</b>	Rabbit
<b>Clonality</b>	Polyclonal
<b>Isotype</b>	IgG
<b>Applications</b>	WB, ICC/IF
<b>Reactivity</b>	Enterovirus 71

**References ( 2 )**
 **Review ( 1 )**
**Package**

100 µl, 25 µl

## Applications

### Application Note

\*Optimal dilutions/concentrations should be determined by the researcher.

Suggested dilution	Recommended dilution
WB	1:500-1:3000
ICC/IF	1:100-1:1000

Not tested in other applications.

## Properties

<b>Form</b>	Liquid
<b>Buffer</b>	PBS, 20% Glycerol
<b>Preservative</b>	0.025% ProClin 300
<b>Storage</b>	Store as concentrated solution. Centrifuge briefly prior to opening vial. For short-term storage (1-2 weeks), store at 4°C. For long-term storage, aliquot and store at -20°C or below. Avoid multiple freeze-thaw cycles.
<b>Concentration</b>	1.2 mg/ml (Please refer to the vial label for the specific concentration.)
<b>Immunogen</b>	Carrier-protein conjugated synthetic peptide encompassing a sequence within the N-terminus region of Enterovirus 71 VP3 (EV71 virus (strain USA/BrCr/1970)). The exact sequence is proprietary.
<b>Purification</b>	Purified by antigen-affinity chromatography.
<b>Conjugation</b>	Unconjugated

### Note

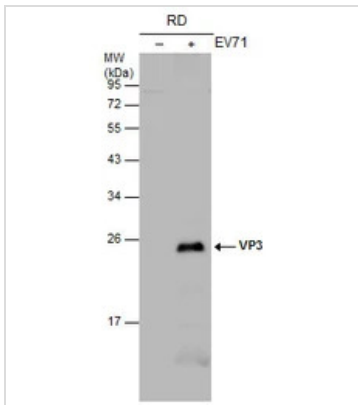
For laboratory research use only. Not for any clinical, therapeutic, or diagnostic use in humans or animals. Not for animal or human consumption.

Purchasers shall not, and agree not to enable third parties to, analyze, copy, reverse engineer or otherwise attempt to determine the structure or sequence of the product.

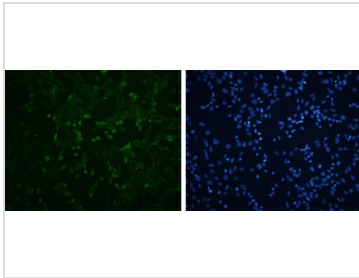


For full product information, images and publications, please visit our [website](#).

## DATA IMAGES

**GTX132341 WB Image**

Non-infected (-) and infected (+) RD whole cell extracts (30 µg) were separated by 12% SDS-PAGE, and the membrane was blotted with EV71 VP3 antibody (GTX132341) diluted at 1:1000.

**GTX132341 ICC/IF Image**

EV71 VP3 antibody detects EV71 VP3 protein by immunofluorescent analysis. Sample: RD cells infected with EV71 were fixed in 4% paraformaldehyde. Green: EV71 VP3 protein stained by EV71 VP3 antibody (GTX132341) diluted at 1:100. Blue: DAPI staining. Scale bar = 500 µm.



For full product information, images and publications, please visit our [website](#).