

Enterovirus 71 2B antibody

Cat. No. GTX132343

Host	Rabbit
Clonality	Polyclonal
Isotype	IgG
Applications	WB, IHC-P
Reactivity	Enterovirus 71

References (3)

★★★★★ Review (1)

Package

100 µl, 25 µl

Applications

Application Note

*Optimal dilutions/concentrations should be determined by the researcher.

Suggested dilution	Recommended dilution
WB	1:500-1:3000
IHC-P	1:100-1:1000

Not tested in other applications.

Properties

Form	Liquid
Buffer	PBS, 20% Glycerol
Preservative	0.025% ProClin 300
Storage	Store as concentrated solution. Centrifuge briefly prior to opening vial. For short-term storage (1-2 weeks), store at 4°C. For long-term storage, aliquot and store at -20°C or below. Avoid multiple freeze-thaw cycles.
Concentration	0.94 mg/ml (Please refer to the vial label for the specific concentration.)
Immunogen	Carrier-protein conjugated synthetic peptide encompassing a sequence within the C-terminus region of Enterovirus 71 2B (EV71 virus (strain USA/BrCr/1970)). The exact sequence is proprietary.
Purification	Purified by antigen-affinity chromatography.
Conjugation	Unconjugated

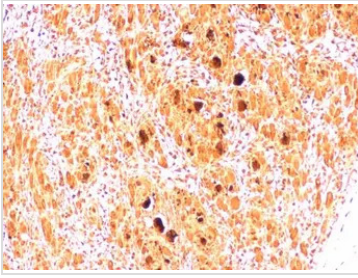
Note

For laboratory research use only. Not for any clinical, therapeutic, or diagnostic use in humans or animals. Not for animal or human consumption.

Purchasers shall not, and agree not to enable third parties to, analyze, copy, reverse engineer or otherwise attempt to determine the structure or sequence of the product.

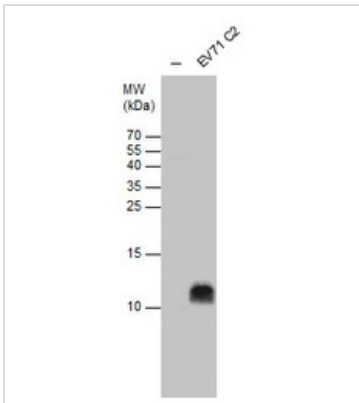
For full product information, images and publications, please visit our [website](#).

DATA IMAGES

**GTX132343 IHC-P Image**

EV71 2B antibody detects EV71 2B protein in EV71 infected mouse skeletal muscle by immunohistochemical analysis. Sample: Paraffin-embedded EV71 infected mouse skeletal muscle. EV71 2B antibody [GTX132343] diluted at 1:500

Antigen Retrieval: Citrate buffer

**GTX132343 WB Image**

EV71 2B antibody detects EV71 2B protein by western blot analysis. Un-infected (-) and infected with EV71 C2 strain RD whole cell extracts (30 µg) were separated by 15% SDS-PAGE, and the membrane was blotted with EV71 2B antibody (GTX132343) at a dilution of 1:1000.



For full product information, images and publications, please visit our [website](#).