

## Zika virus Envelope protein antibody

**Cat. No. GTX133314**

<b>Host</b>	Rabbit
<b>Clonality</b>	Polyclonal
<b>Isotype</b>	IgG
<b>Applications</b>	WB, ICC/IF, IHC-P
<b>Reactivity</b>	Zika virus

References ( 114 )

★★★★☆ Review ( 6 )

Package

100 µl, 25 µl

## Applications

**Application Note**

\*Optimal dilutions/concentrations should be determined by the researcher.

Suggested dilution	Recommended dilution
WB	1:500-1:3000
ICC/IF	1:100-1:1000
IHC-P	Assay dependent

Not tested in other applications.

**Calculated MW** 54 kDa. ( [Note](#) )

## Properties

<b>Form</b>	Liquid
<b>Buffer</b>	PBS, 20% Glycerol
<b>Preservative</b>	0.025% ProClin 300
<b>Storage</b>	Store as concentrated solution. Centrifuge briefly prior to opening vial. For short-term storage (1-2 weeks), store at 4°C. For long-term storage, aliquot and store at -20°C or below. Avoid multiple freeze-thaw cycles.
<b>Concentration</b>	1.43 mg/ml (Please refer to the vial label for the specific concentration.)
<b>Immunogen</b>	Carrier-protein conjugated synthetic peptide encompassing a sequence within the center region of Zika virus Envelope protein (Zika virus (strain H/PF/2013)). The exact sequence is proprietary.
<b>Purification</b>	Purified by antigen-affinity chromatography.
<b>Conjugation</b>	Unconjugated

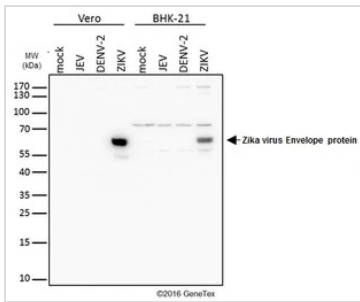
**Note**

For laboratory research use only. Not for any clinical, therapeutic, or diagnostic use in humans or animals. Not for animal or human consumption.

Purchasers shall not, and agree not to enable third parties to, analyze, copy, reverse engineer or otherwise attempt to determine the structure or sequence of the product.

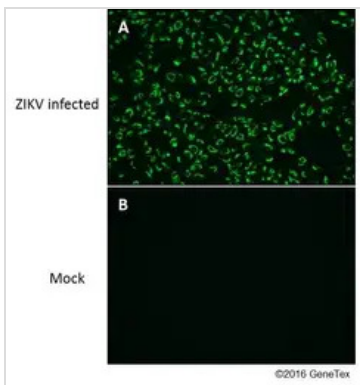
For full product information, images and publications, please visit our [website](#).

DATA IMAGES



**GTX133314 WB Image**

Mock and infected Vero and BHK-21 whole cell extracts (20 µg) were separated by gradient gel, and the membrane was blotted with Zika virus Envelope protein antibody (GTX133314) diluted at 1:4000. This image was provided courtesy of cooperative research laboratories.

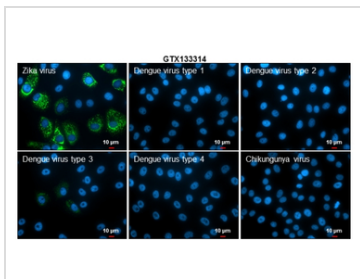


**GTX133314 ICC/IF Image**

Immunofluorescent analysis of Zika Virus-PRVABC59 infected (A) and non-infected (B) vero cells using Zika virus Envelope protein antibody (GTX133314).

Green: Zika virus Envelope protein antibody (GTX133314) diluted at 1:4000.

This image was provided courtesy of cooperative research laboratories.



**GTX133314 ICC/IF Image**

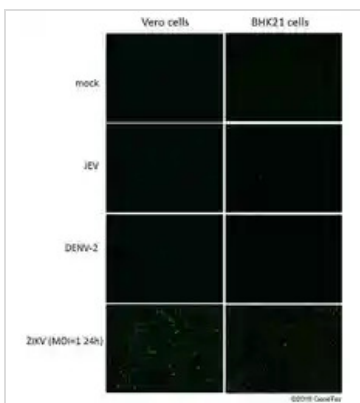
Immunofluorescent analysis of arboviruses infected cells using Zika virus Envelope protein antibody (GTX133314).

Samples: EUROIMMUN Arboviral Fever Mosaic 2 slide (FR 2668-1010-1).

Green: Zika virus Envelope protein antibody (GTX133314) diluted at 1:500.

Blue: Hoechst 33342 staining.

Scale bar = 10 µm.



**GTX133314 ICC/IF Image**

Immunofluorescent analysis of non-infected and infected vero or BHK-21 cells using Zika virus Envelope protein antibody (GTX133314).

Green: Zika virus Envelope protein antibody (GTX133314) diluted at 1:4000.

This image was provided courtesy of cooperative research laboratories.



For full product information, images and publications, please visit our [website](#).