

Human Papillomavirus type 18 E7 antibody

Cat. No. GTX133412

| | |
|--------------|------------------------------|
| Host | Rabbit |
| Clonality | Polyclonal |
| Isotype | IgG |
| Applications | WB, ICC/IF |
| Reactivity | Human papillomavirus type 18 |

References (3)

★★★★☆ Review (1)

Package

100 µl, 25 µl

Applications

Application Note

*Optimal dilutions/concentrations should be determined by the researcher.

| Suggested dilution | Recommended dilution |
|--------------------|----------------------|
| WB | 1:500-1:3000 |
| ICC/IF | Assay dependent |

Not tested in other applications.

Properties

| | |
|---------------|--|
| Form | Liquid |
| Buffer | PBS, 20% Glycerol |
| Preservative | 0.025% ProClin 300 |
| Storage | Store as concentrated solution. Centrifuge briefly prior to opening vial. For short-term storage (1-2 weeks), store at 4°C. For long-term storage, aliquot and store at -20°C or below. Avoid multiple freeze-thaw cycles. |
| Concentration | 0.67 mg/ml (Please refer to the vial label for the specific concentration.) |
| Immunogen | Full length Human Papilloma virus type 18 E7 recombinant protein. |
| Purification | Purified by antigen-affinity chromatography. |
| Conjugation | Unconjugated |

Note

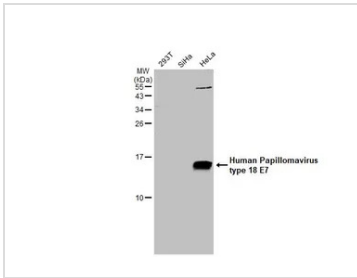
For laboratory research use only. Not for any clinical, therapeutic, or diagnostic use in humans or animals. Not for animal or human consumption.

Purchasers shall not, and agree not to enable third parties to, analyze, copy, reverse engineer or otherwise attempt to determine the structure or sequence of the product.



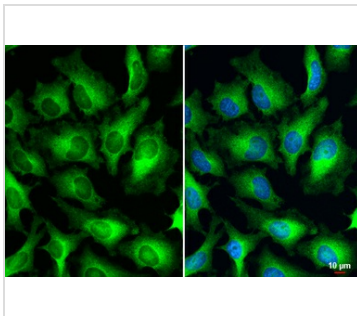
For full product information, images and publications, please visit our [website](#).

DATA IMAGES



GTX133412 WB Image

Various whole cell extracts (30 µg) were separated by 15% SDS-PAGE, and the membrane was blotted with Human Papillomavirus type 18 E7 antibody (GTX133412) diluted at 1:1000. The HRP-conjugated anti-rabbit IgG antibody (GTX213110-01) was used to detect the primary antibody.



GTX133412 ICC/IF Image

Human Papillomavirus type 18 E7 antibody detects Human Papillomavirus type 18 E7 protein at cytoplasm by immunofluorescent analysis.

Sample: HeLa cells were fixed in 4% paraformaldehyde at RT for 15 min.

Green: Human Papillomavirus type 18 E7 stained by Human Papillomavirus type 18 E7 antibody (GTX133412) diluted at 1:500.

Blue: Hoechst 33342 staining.

Scale bar= 10 µm.



For full product information, images and publications, please visit our [website](https://www.genetex.com).