

## Osteocalcin antibody [OC4-30]

**Cat. No. GTX13418**

<b>Host</b>	Mouse
<b>Clonality</b>	Monoclonal
<b>Isotype</b>	IgG2a
<b>Applications</b>	WB, ICC/IF, IHC-P, IHC-Fr, ELISA, IHC, Sandwich ELISA
<b>Reactivity</b>	Human, Rat, Rabbit, Goat, Sheep, Dog, Chicken, Pig

References ( 13 )

Package

50 µg

## Applications

**Application Note**

\*Optimal dilutions/concentrations should be determined by the researcher.

Suggested dilution	Recommended dilution
WB	1-10 µg/ml
ICC/IF	Assay dependent
IHC-P	1-10µg/ml
IHC-Fr	1-10µg/ml
ELISA	Assay dependent
IHC	Assay dependent
Sandwich ELISA	1-10µg/ml (with immobilized antigen)

**Note : Antigen retrieval with 0.4ug/ml Proteinase K.****Antigen retrieval with 0.4ug/ml Proteinase K.****Capture : GTX13418 ; Detection : GTX13421**

Not tested in other applications.

**Calculated MW** 11 kDa. ( [Note](#) )

## Properties

<b>Form</b>	Liquid
<b>Buffer</b>	PBS, 1% BSA
<b>Preservative</b>	No preservative
<b>Storage</b>	Store as concentrated solution. Centrifuge briefly prior to opening vial. For short-term storage (1-2 weeks), store at 4°C. For long-term storage, aliquot and store at -20°C or below. Avoid multiple freeze-thaw cycles.
<b>Concentration</b>	Batch dependent (Please refer to the vial label for the specific concentration.)
<b>Immunogen</b>	Bovine osteocalcin



For full product information, images and publications, please visit our [website](#).

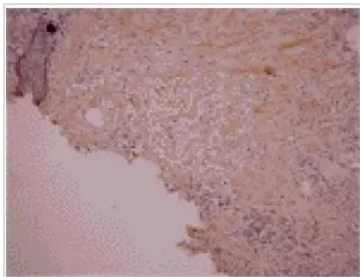
**Purification** Purified by affinity chromatography

**Conjugation** Unconjugated

**Note** For laboratory research use only. Not for any clinical, therapeutic, or diagnostic use in humans or animals. Not for animal or human consumption.

Purchasers shall not, and agree not to enable third parties to, analyze, copy, reverse engineer or otherwise attempt to determine the structure or sequence of the product.

DATA IMAGES



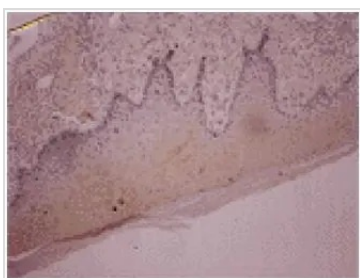
**GTX13418 IHC-P Image**

IHC-P analysis of human synovial sarcoma tissue using GTX13418 Osteocalcin antibody [OC4-30].



**GTX13418 IHC-P Image**

IHC-P analysis of human chondroma tissue using GTX13418 Osteocalcin antibody [OC4-30].



**GTX13418 IHC-P Image**

IHC-P analysis of human synovial sarcoma tissue using GTX13418 Osteocalcin antibody [OC4-30].



For full product information, images and publications, please visit our [website](#).