

## Caspase 4 antibody

**Cat. No. GTX134552**

<b>Host</b>	Rabbit
<b>Clonality</b>	Polyclonal
<b>Isotype</b>	IgG
<b>Applications</b>	WB, IHC-P
<b>Reactivity</b>	Human, Mouse, Rat

**Package**  
100 µl, 25 µl

## Applications

**Application Note**

\*Optimal dilutions/concentrations should be determined by the researcher.

Suggested dilution	Recommended dilution
WB	1:500-1:3000
IHC-P	Assay dependent

Not tested in other applications.

**Calculated MW** 43 kDa. ([Note](#))

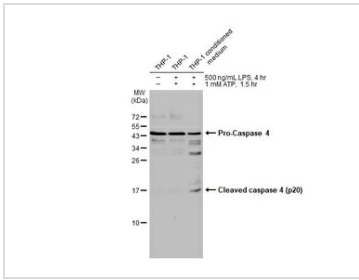
## Properties

<b>Form</b>	Liquid
<b>Buffer</b>	PBS, 20% Glycerol
<b>Preservative</b>	0.025% ProClin 300
<b>Storage</b>	Store as concentrated solution. Centrifuge briefly prior to opening vial. For short-term storage (1-2 weeks), store at 4°C. For long-term storage, aliquot and store at -20°C or below. Avoid multiple freeze-thaw cycles.
<b>Concentration</b>	1.12 mg/ml (Please refer to the vial label for the specific concentration.)
<b>Immunogen</b>	Carrier-protein conjugated synthetic peptide encompassing a sequence within the N-terminus region of human Caspase 4. The exact sequence is proprietary.
<b>Purification</b>	Purified by antigen-affinity chromatography.
<b>Conjugation</b>	Unconjugated
<b>Note</b>	For laboratory research use only. Not for any clinical, therapeutic, or diagnostic use in humans or animals. Not for animal or human consumption.  Purchasers shall not, and agree not to enable third parties to, analyze, copy, reverse engineer or otherwise attempt to determine the structure or sequence of the product.



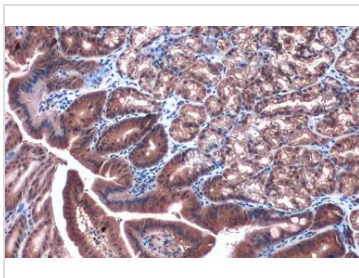
For full product information, images and publications, please visit our [website](#).

DATA IMAGES



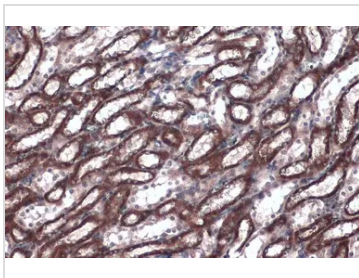
**GTX134552 WB Image**

Untreated (-) and treated (+) THP-1 whole cell extract and conditioned medium (30 µg) were separated by 15% SDS-PAGE, and the membrane was blotted with Caspase 4 antibody (GTX134552) diluted at 1:500. The HRP-conjugated anti-rabbit IgG antibody (GTX213110-01) was used to detect the primary antibody, and the signal was developed with Trident ECL plus-Enhanced.



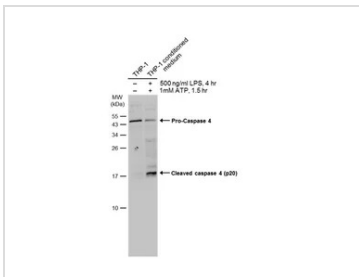
**GTX134552 IHC-P Image**

Caspase 4 antibody detects Caspase 4 protein at cytoplasm by immunohistochemical analysis. Sample: Paraffin-embedded mouse duodenum. Caspase 4 stained by Caspase 4 antibody (GTX134552) diluted at 1:1000. Antigen Retrieval: Citrate buffer, pH 6.0, 15 min



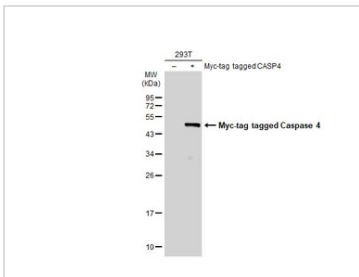
**GTX134552 IHC-P Image**

Caspase 4 antibody detects Caspase 4 protein at cytoplasm by immunohistochemical analysis. Sample: Paraffin-embedded rat kidney. Caspase 4 stained by Caspase 4 antibody (GTX134552) diluted at 1:1000. Antigen Retrieval: Citrate buffer, pH 6.0, 15 min



**GTX134552 WB Image**

THP-1 whole cell extracts (30 µg) were separated by 15% SDS-PAGE, and the membrane was blotted with Caspase 4 (cleaved Gln81) antibody (GTX134552) diluted at 1:500. The HRP-conjugated anti-rabbit IgG antibody (GTX213110-01) was used to detect the primary antibody.



**GTX134552 WB Image**

Non-transfected (-) and transfected (+) 293T whole cell extracts (30 µg) were separated by 12% SDS-PAGE, and the membrane was blotted with Caspase 4 antibody (GTX134552) diluted at 1:5000. The HRP-conjugated anti-rabbit IgG antibody (GTX213110-01) was used to detect the primary antibody.



For full product information, images and publications, please visit our [website](http://www.genetex.com).