

Chikungunya virus E1 antibody

Cat. No. GTX135187

Host	Rabbit
Clonality	Polyclonal
Isotype	IgG
Applications	WB, ICC/IF
Reactivity	Chikungunya Virus

References (2)

Package

100 µl, 25 µl

Applications

Application Note

*Optimal dilutions/concentrations should be determined by the researcher.

Suggested dilution	Recommended dilution
WB	1:5000
ICC/IF	Assay dependent

Not tested in other applications.

Properties

Form	Liquid
Buffer	PBS, 20% Glycerol
Preservative	0.025% ProClin 300
Storage	Store as concentrated solution. Centrifuge briefly prior to opening vial. For short-term storage (1-2 weeks), store at 4°C. For long-term storage, aliquot and store at -20°C or below. Avoid multiple freeze-thaw cycles.
Concentration	1.26 mg/ml (Please refer to the vial label for the specific concentration.)
Immunogen	Recombinant protein encompassing a sequence within the center region of Chikungunya virus E1 (Chikungunya virus (strain S27-African prototype)). The exact sequence is proprietary.
Purification	Purified by antigen-affinity chromatography.
Conjugation	Unconjugated

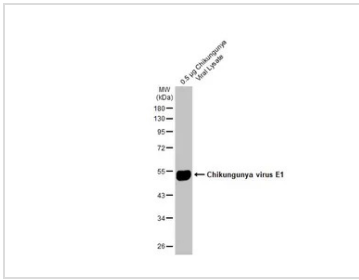
Note

For laboratory research use only. Not for any clinical, therapeutic, or diagnostic use in humans or animals. Not for animal or human consumption.

Purchasers shall not, and agree not to enable third parties to, analyze, copy, reverse engineer or otherwise attempt to determine the structure or sequence of the product.

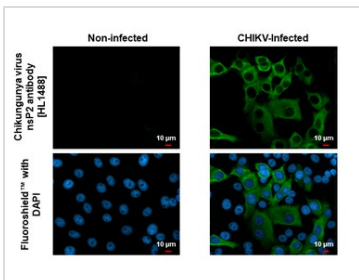
For full product information, images and publications, please visit our [website](#).

DATA IMAGES



GTX135187 WB Image

Chikungunya viral lysate (0.5 µg) was separated by 10% SDS-PAGE, and the membrane was blotted with Chikungunya virus E1 antibody (GTX135187) diluted at 1:50000. The HRP-conjugated anti-rabbit IgG antibody (GTX213110-01) was used to detect the primary antibody.



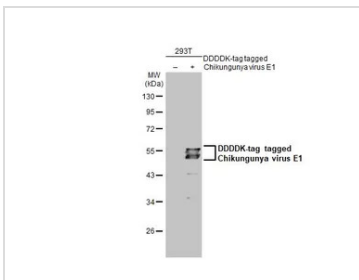
GTX135187 ICC/IF Image

Immunofluorescent analysis of mock and Chikungunya virus-infected cells using Chikungunya virus nsP2 antibody [HL1488] (GTX135187).

Sample: Chikungunya virus non-infected and infected cells slide.

Green: Chikungunya virus nsP2 antibody [HL1488] (GTX135187) diluted at 1:100.

Blue: Fluoroshield with DAPI (GTX30920).



GTX135187 WB Image

Non-transfected (-) and transfected (+) 293T whole cell extracts (30 µg) were separated by 10% SDS-PAGE, and the membrane was blotted with Chikungunya virus E1 antibody (GTX135187) diluted at 1:500. The HRP-conjugated anti-rabbit IgG antibody (GTX213110-01) was used to detect the primary antibody.



For full product information, images and publications, please visit our [website](#).