

## Fas antibody

**Cat. No. GTX13550**

<b>Host</b>	Rabbit
<b>Clonality</b>	Polyclonal
<b>Isotype</b>	IgG
<b>Applications</b>	WB, FACS, IHC
<b>Reactivity</b>	Human, Mouse, Rat, Dog

References ( 6 )

Package

100 µg

## Applications

**Application Note****Recommended Starting Dilutions:**

FACS: Use at an assay dependent dilution.

WB: Use at a dilution of 1:1000.

IHC: Use at a dilution of 1:50. Optimal dilution / concentration should be determined by the end user.

**Calculated MW** 37 kDa. ( [Note](#) )

## Properties

<b>Form</b>	Liquid
<b>Buffer</b>	PBS
<b>Preservative</b>	0.09% Sodium azide
<b>Storage</b>	Store as concentrated solution. Centrifuge briefly prior to opening vial. For short-term storage (1-2 weeks), store at 4°C. For long-term storage, aliquot and store at -20°C or below. Avoid multiple freeze-thaw cycles.
<b>Concentration</b>	1 mg/ml (Please refer to the vial label for the specific concentration.)
<b>Immunogen</b>	Synthetic peptide: ESLKLRRRVHETDKNC conjugated to KLH, corresponding to amino acids 29-44 of Mouse CD95 .
<b>Purification</b>	Immunogen affinity purified This antibody was purified on a peptide bound immunoaffinity column.
<b>Conjugation</b>	Unconjugated

**Note**

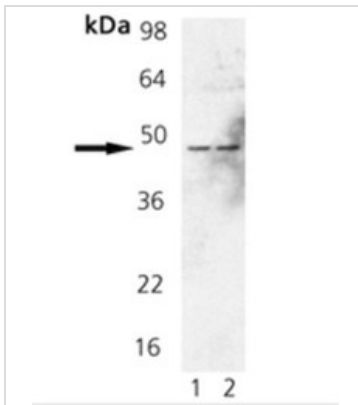
For laboratory research use only. Not for any clinical, therapeutic, or diagnostic use in humans or animals. Not for animal or human consumption.

Purchasers shall not, and agree not to enable third parties to, analyze, copy, reverse engineer or otherwise attempt to determine the structure or sequence of the product.



For full product information, images and publications, please visit our [website](#).

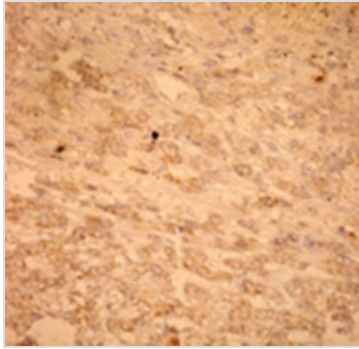
## DATA IMAGES

**GTX13550 WB Image**

Western blot analysis of Fas pAb :

Lane 1: Rat Brain Tissue Extract

Lane 2: Mouse Brain Tissue Extract

**GTX13550 IHC Image**

Immunohistochemical staining of human hepatoma tissue with Fas pAb.



For full product information, images and publications, please visit our [website](#).