

SARS-CoV-2 (COVID-19) nsp3 antibody

Cat. No. GTX135589

Host	Rabbit
Clonality	Polyclonal
Isotype	IgG
Applications	WB, ICC/IF, IHC-P (cell pellet)
Reactivity	SARS Coronavirus 2

References (9)

Package

100 µl, 25 µl

Applications

Application Note

*Optimal dilutions/concentrations should be determined by the researcher.

Suggested dilution	Recommended dilution
WB	1:1000-1:10000
ICC/IF	Assay dependent
IHC-P (cell pellet)	Assay dependent

Not tested in other applications.

Product Note This antibody was raised against nsp3c domain, and it does not react with PLpro domain.

Properties

Form	Liquid
Buffer	PBS, 20% Glycerol
Preservative	0.025% ProClin 300
Storage	Store as concentrated solution. Centrifuge briefly prior to opening vial. For short-term storage (1-2 weeks), store at 4°C. For long-term storage, aliquot and store at -20°C or below. Avoid multiple freeze-thaw cycles.
Concentration	0.69 mg/ml (Please refer to the vial label for the specific concentration.)
Immunogen	Recombinant protein encompassing a sequence within the center region of SARS-CoV-2 (COVID-19) nsp3c (Strain:Wuhan-Hu-1). The exact sequence is proprietary.
Purification	Affinity purified by Protein A.
Conjugation	Unconjugated

Note

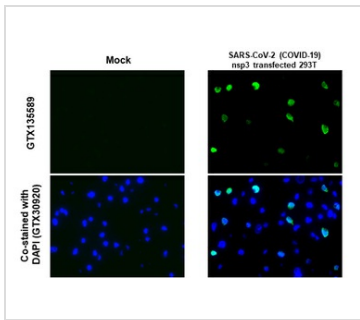
For laboratory research use only. Not for any clinical, therapeutic, or diagnostic use in humans or animals. Not for animal or human consumption.

Purchasers shall not, and agree not to enable third parties to, analyze, copy, reverse engineer or otherwise attempt to determine the structure or sequence of the product.



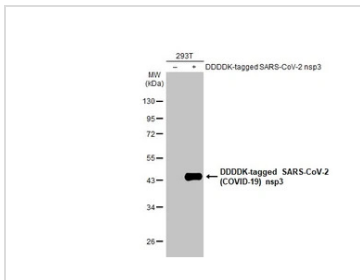
For full product information, images and publications, please visit our [website](#).

DATA IMAGES



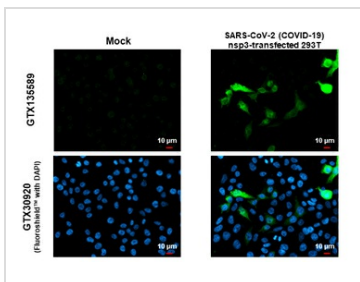
GTX135589 IHC-P (cell pellet) Image

SARS-CoV-2 (COVID-19) nsp3 antibody detects SARS-CoV-2 (COVID-19) nsp3 protein at cytoplasm by immunohistochemical analysis.
 Sample: Mock (GTX435670) and SARS-CoV-2 (COVID-19) nsp3 transfected 293T cell FFPE Cell Pellet Block.
 Green: SARS-CoV-2 (COVID-19) nsp3 stained by SARS-CoV-2 (COVID-19) nsp3 antibody (GTX135589) diluted at 1:1000.
 Blue: Fluoroshield with DAPI (GTX30920).
 Antigen Retrieval: Citrate buffer, pH 6.0, 15 min



GTX135589 WB Image

Non-transfected (-) and transfected (+) 293T whole cell extracts (30 µg) were separated by 10% SDS-PAGE, and the membrane was blotted with SARS-CoV-2 (COVID-19) nsp3 antibody (GTX135589) diluted at 1:5000. The HRP-conjugated anti-rabbit IgG antibody (GTX213110-01) was used to detect the primary antibody.



GTX135589 ICC/IF Image

SARS-CoV-2 (COVID-19) nsp3 antibody detects SARS-CoV-2 (COVID-19) nsp3 protein by immunofluorescent analysis.
 Sample: Mock and transfected 293T cells were fixed in 4% paraformaldehyde at RT for 15 min.
 Green: SARS-CoV-2 (COVID-19) nsp3 stained by SARS-CoV-2 (COVID-19) nsp3 antibody (GTX135589) diluted at 1:500.
 Blue: Fluoroshield with DAPI (GTX30920).



For full product information, images and publications, please visit our [website](#).