

## SARS-CoV-2 (COVID-19) Nucleocapsid protein, His tag

Cat. No. GTX135592-pro

**Applications** WB, ELISA, Lateral Flow, Sandwich ELISA**Species** SARS Coronavirus 2

References ( 4 )

Package

100 µg

## Applications

## Application Note

Recommended antibody pairs for sandwich ELISA :

Capture: GTX635685, Detection: GTX635712 / GTX635688 / GTX635678. or Capture: GTX635679 / GTX635689, Detection: GTX635686-01.

Please notice that detection antibodies need to be conjugated to HRP when paired with capture antibodies. Please contact us for custom HRP-conjugated antibody.

Recommended antibody pairs for Lateral Flow :

Capture: GTX635688, Detection: GTX635686 / GTX637789

Please notice that the detection antibodies need to be conjugated to Gold to function when paired with capture antibodies. Please contact us for custom Gold-conjugated antibody.

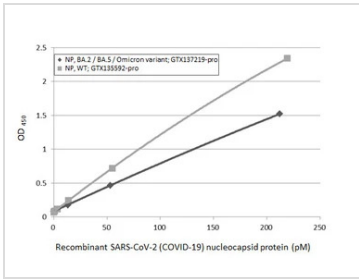
**Calculated MW** 46 kDa. ( [Note](#) )

## Properties

**Form** Liquid**Buffer** Tris, 500mM NaCl**Preservative** No preservative**Storage** Store as concentrated solution. Centrifuge briefly prior to opening vial. Aliquot and store at -20°C or below. Avoid multiple freeze-thaw cycles. For long-term storage after reconstitution, aliquot and store at -70°C or below. Do not vortex.**Concentration** 0.2 mg/ml (Please refer to the vial label for the specific concentration.)**Region/Sequence** C-terminal His tagged full length protein of YP\_009724397.2**Expression System** HEK293 cells**Purity** >90%**Conjugation** Unconjugated**Note** For *In vitro* laboratory use only. Not for any clinical, therapeutic, or diagnostic use in humans or animals. Not for animal or human consumption.

For full product information, images and publications, please visit our [website](#).

DATA IMAGES

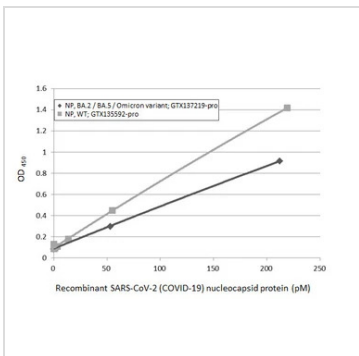


**GTX135592-pro ELISA Image**

Sandwich ELISA detection of recombinant nucleocapsid protein(s) derived from different strains of SARS-CoV-2 virus (ie., Wild type; BA.2 / BA.5 Omicron variant) using antibodies as below.

**Capture:** SARS-CoV-2 (COVID-19) nucleocapsid antibody [HL511] (GTX635689) (5 µg/mL)

**Detection:** SARS-CoV-2 (COVID-19) nucleocapsid antibody [HL448] (HRP) (GTX635686-01) (1 µg/mL)



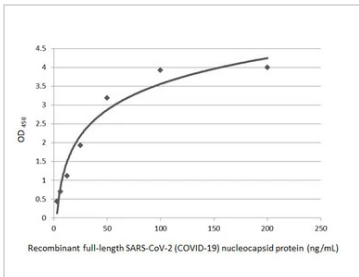
**GTX135592-pro ELISA Image**

Sandwich ELISA detection of recombinant nucleocapsid protein(s) derived from different strains of SARS-CoV-2 virus (ie., Wild type; BA.2 / BA.5 Omicron variant) using antibodies as below.

**Capture:** SARS-CoV-2 (COVID-19) nucleocapsid antibody [HL5410] (GTX635685) (5 µg/mL)

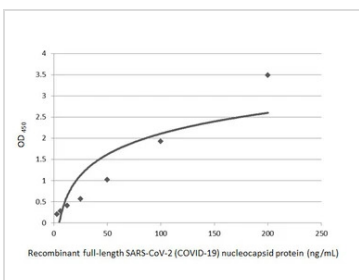
**Detection:** HRP-conjugated SARS-CoV-2 (COVID-19) nucleocapsid antibody [HL455] (GTX635688) (1 µg/mL)

Please notice that GTX635688 needs to be conjugated to HRP to function as the detection antibody when paired with GTX635685. Please contact us for custom HRP-conjugated antibody.



**GTX135592-pro ELISA Image**

Sandwich ELISA detection of recombinant full-length SARS-CoV-2 (COVID-19) nucleocapsid protein, His tag protein (GTX135592-pro) using SARS-CoV-2 (COVID-19) nucleocapsid antibody [HL5410] (GTX635685) as capture antibody at concentration of 5 µg/mL and HRP-conjugated SARS-CoV-2 (COVID-19) nucleocapsid antibody [HL455] (GTX635688) as detection antibody at concentration of 1 µg/mL.



**GTX135592-pro ELISA Image**

Sandwich ELISA detection of recombinant full-length SARS-CoV-2 (COVID-19) nucleocapsid protein, His tag protein (GTX135592-pro) using SARS-CoV-2 (COVID-19) nucleocapsid antibody [HL5410] (GTX635685) as capture antibody at concentration of 5 µg/mL and HRP-conjugated SARS-CoV-2 (COVID-19) nucleocapsid antibody [HL249] (GTX635678) as detection antibody at concentration of 1 µg/mL.



For full product information, images and publications, please visit our [website](#).