

Respiratory Syncytial virus type A Nucleoprotein, DDDDK tag

Cat. No. GTX136751-pro

Applications	WB, ELISA, Lateral Flow, Sandwich ELISA
---------------------	---

Species	Respiratory syncytial virus type A
----------------	------------------------------------

Package

100 µg

Applications

Application Note

Recommended antibody pairs for Lateral Flow:

Capture : GTX638184, Detection : GTX638186, or Capture : GTX636650, Detection : GTX636648

Recommended antibody pairs for sandwich ELISA:

Capture : GTX636711 / GTX636649, Detection : GTX640511, or Capture : GTX636650 / GTX636649, Detection : GTX636648, or Capture : GTX636709, Detection : GTX636649, or Capture : GTX636647, Detection : GTX636705

Please notice that the detection antibody needs to be conjugated to HRP when paired with the capture antibody.

Please contact us for custom HRP-conjugated antibody.

Properties

Form	Liquid
-------------	--------

Buffer	Tris, 500mM NaCl
---------------	------------------

Preservative	No preservative
---------------------	-----------------

Storage	Store as concentrated solution. Centrifuge briefly prior to opening vial. Aliquot and store at -20°C or below. Avoid multiple freeze-thaw cycles. For long-term storage after reconstitution, aliquot and store at -70°C or below. Do not vortex.
----------------	---

Concentration	0.2 mg/ml (Please refer to the vial label for the specific concentration.)
----------------------	--

Region/Sequence	Respiratory syncytial virus of YP_009518852.1 (1-391 a.a) with DDDDK tag at the C-terminus
------------------------	--

Expression System	HEK293 cells
--------------------------	--------------

Purity	>95%
---------------	------

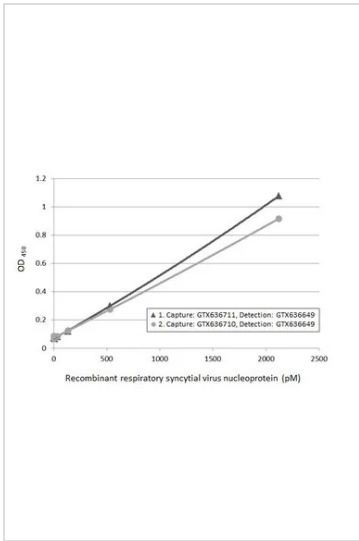
Conjugation	Unconjugated
--------------------	--------------

Note	For <i>In vitro</i> laboratory use only. Not for any clinical, therapeutic, or diagnostic use in humans or animals. Not for animal or human consumption.
-------------	--



For full product information, images and publications, please visit our [website](#).

DATA IMAGES



GTX136751-pro ELISA Image

Sandwich ELISA detection of recombinant HEK293 expressed, full-length respiratory syncytial virus type A nucleoprotein, DDDDK tag (GTX136751-pro) using ELISA pairs below.

Pair 1:

Capture: Respiratory Syncytial virus type A Nucleoprotein antibody [HL1297] (GTX636711) (5 µg/mL)

Detection: Respiratory Syncytial virus Nucleoprotein antibody [HL1247] (GTX636649) conjugated with HRP (1 µg/mL)

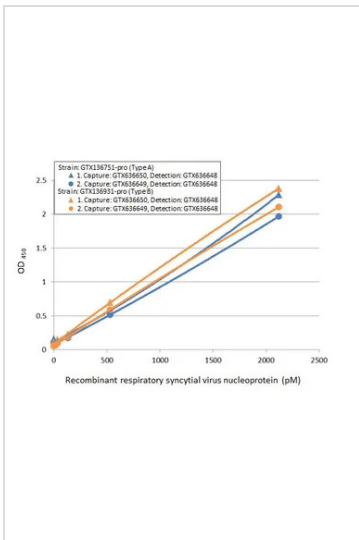
Pair 2:

Capture: Respiratory Syncytial virus Nucleoprotein antibody [HL1296] (GTX636710) (5 µg/mL)

Detection: Respiratory Syncytial virus Nucleoprotein antibody [HL1247] (GTX636649) conjugated with HRP (1 µg/mL)

Please notice that detection antibodies need to be conjugated to HRP to function when paired with capture one.

Please contact us for custom HRP-conjugated antibody.



GTX136751-pro ELISA Image

Sandwich ELISA of recombinant nucleoproteins (NP) derived from different strains of respiratory syncytial virus (i.e., type A; type B) using ELISA pairs below.

Pair 1:

Capture: Respiratory Syncytial virus Nucleoprotein antibody [HL1248] (GTX636650) (5 µg/mL)

Detection: Respiratory Syncytial virus Nucleoprotein antibody [HL1246] (GTX636648) conjugated with HRP (1 µg/mL)

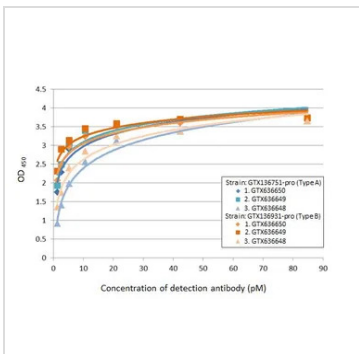
Pair 2:

Capture: Respiratory Syncytial virus Nucleoprotein antibody [HL1247] (GTX636649) (5 µg/mL)

Detection: Respiratory Syncytial virus Nucleoprotein antibody [HL1246] (GTX636648) conjugated with HRP (1 µg/mL)

Please notice that detection antibodies need to be conjugated to HRP to function when paired with capture one.

Please contact us for custom HRP-conjugated antibody.



GTX136751-pro ELISA Image

Indirect ELISA analysis performed by coating plate with recombinant nucleoproteins (NP) derived from different strains of respiratory syncytial virus (i.e., type A; type B) (84.76-1.32 nM). Coated protein was probed with Respiratory Syncytial virus Nucleoprotein antibodies (1 µg/mL) below. Goat anti-rabbit IgG antibody (HRP) (GTX213110-01) (1:10000) was used to detect bound primary antibody.

Antibodies:

1. Respiratory Syncytial virus Nucleoprotein antibody [HL1248] (GTX636650)
2. Respiratory Syncytial virus Nucleoprotein antibody [HL1247] (GTX636649)
3. Respiratory Syncytial virus type A Nucleoprotein antibody [HL1246] (GTX636648)



For full product information, images and publications, please visit our [website](#).