

ASFV p54 (ECD) protein, His Tag

Cat. No. GTX137950-pro

| | |
|---------------------|-------------------------------------|
| Applications | ELISA, Lateral Flow, Sandwich ELISA |
| Species | African swine fever virus |

Package

100 µg

Applications

Application Note

For Sandwich ELISA, we would recommend the following pairs :

Capture: GTX636700, Detection : GTX636703.

Please notice that GTX636703 needs to be conjugated to HRP to function as the detection antibody when paired with GTX636700. Please contact us for custom HRP-conjugated antibody.

For Lateral Flow, we would recommend the following pairs :

Capture : GTX636701, Detection : GTX635691 / GTX636562 or Capture : GTX635690 / GTX635691 / GTX636563 / GTX636700, Detection : GTX636562,

or Capture : GTX635690 / GTX635691 / GTX636563 / GTX636700 / GTX636701, Detection : GTX636703

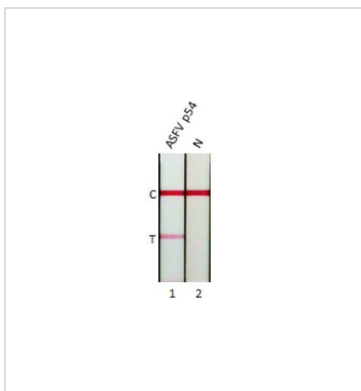
Properties

| | |
|--------------------------|--|
| Form | Lyophilized powder |
| Buffer | Reconstitute with distilled water to 0.5 mg/ml. Lyophilized from PBS, 2% Trehalose, 5% Mannitol, 0.01% Tween-80. |
| Preservative | No Preservative |
| Storage | Store at 4°C or below. After reconstitution, keep as concentrated solution. Aliquot and store at -20°C or below. Avoid multiple freeze-thaw cycles. For long-term storage after reconstitution, aliquot and store at -70°C or below. Do not vortex. |
| Region/Sequence | ASFV p54 (53-184 aa) region of NP_042818.1 and a C-terminal His tag. |
| Expression System | HEK293 cells |
| Purity | >95% |
| Conjugation | Unconjugated |
| Note | For laboratory research use only. Not for any clinical, therapeutic, or diagnostic use in humans or animals. Not for animal or human consumption. Purchasers shall not, and agree not to enable third parties to, analyze, copy, reverse engineer or otherwise attempt to determine the structure or sequence of the product. |



For full product information, images and publications, please visit our [website](#).

DATA IMAGES

**GTX137950-pro Lateral Flow Image**

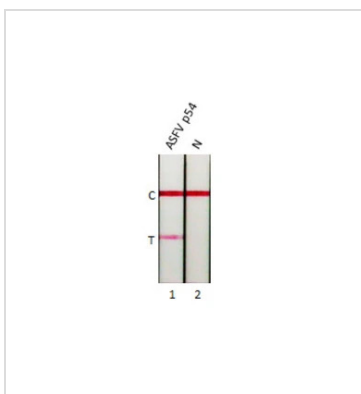
Detection of HEK293 expressed, ASFV p54 (ECD) protein by lateral flow assay using the monoclonal antibody pair.

Capture: ASFV p54 antibody (GTX636563 [HL1219])

Detection: ASFV p54 antibody (GTX636562 [HL1218])

Samples (20 ng) :

1. ASFV p54 (ECD) protein (GTX137950-pro)
2. Lysis buffer

**GTX137950-pro Lateral Flow Image**

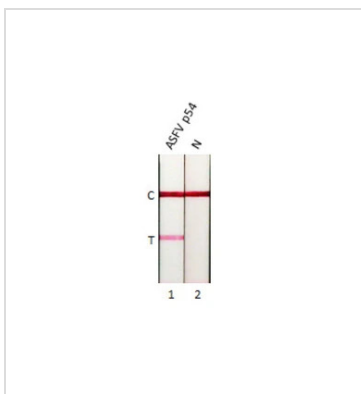
Detection of HEK293 expressed, ASFV p54 (ECD) protein by lateral flow assay using the monoclonal antibody pair.

Capture: ASFV p54 antibody (GTX636701 [HL1287])

Detection: ASFV p54 antibody (GTX636562 [HL1218])

Samples (10 ng) :

1. ASFV p54 (ECD) protein (GTX137950-pro)
2. Lysis buffer

**GTX137950-pro Lateral Flow Image**

Detection of HEK293 expressed, ASFV p54 (ECD) protein by lateral flow assay using the monoclonal antibody pair.

Capture: ASFV p54 antibody (GTX635691 [GT1075])

Detection: ASFV p54 antibody (GTX636562 [HL1218])

Samples (40 ng) :

1. ASFV p54 (ECD) protein (GTX137950-pro)
2. Lysis buffer



For full product information, images and publications, please visit our [website](#).