

PDI antibody [RL90]

Cat. No. GTX22792

Host	Mouse
Clonality	Monoclonal
Isotype	IgG2a
Applications	WB, ICC/IF, IHC-P, IHC-Fr, FACS, IP, IM, Neutralizing/Inhibition
Reactivity	Human, Mouse, Rat, Dog, Hamster, Pig, Rhesus Monkey, Primate

References (1)

Package

100 µl

Applications

Application Note

*Optimal dilutions/concentrations should be determined by the researcher.

Suggested dilution	Recommended dilution
WB	1:200-1:2000
ICC/IF	1:100
IHC-P	1:100
IHC-Fr	1:100
FACS	0.5-1 µg/test
IP	Assay dependent
IM	Assay dependent
Neutralizing/Inhibition	Assay dependent

Not tested in other applications.

Calculated MW 57 kDa. ([Note](#))

Properties

Form	Liquid
Buffer	Buffer, 0.1% BSA
Preservative	0.05% Sodium azide
Storage	Store as concentrated solution. Centrifuge briefly prior to opening vial. For short-term storage (1-2 weeks), store at 4°C. For long-term storage, aliquot and store at -20°C or below. Avoid multiple freeze-thaw cycles.
Concentration	1 mg/ml (Please refer to the vial label for the specific concentration.)
Immunogen	Purified rat PDI protein.
Purification	Protein A purified



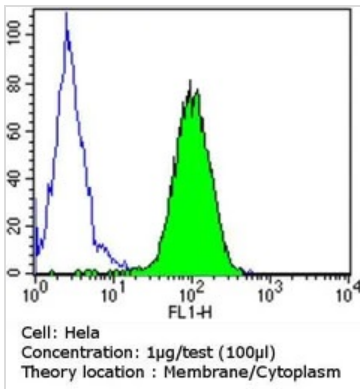
For full product information, images and publications, please visit our [website](#).

Conjugation Unconjugated

For laboratory research use only. Not for any clinical, therapeutic, or diagnostic use in humans or animals. Not for animal or human consumption.

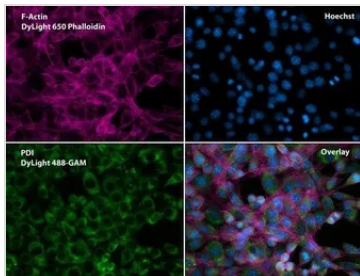
Note Purchasers shall not, and agree not to enable third parties to, analyze, copy, reverse engineer or otherwise attempt to determine the structure or sequence of the product.

DATA IMAGES



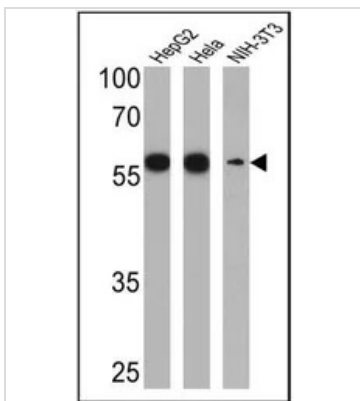
GTX22792 FACS Image

FACS analysis of HeLa cells using GTX22792 PDI antibody [RL90] compared to an isotype control (blue).
 Dilution : 1 ug/test for 60 min at room temperature
 Fixation : 2% paraformaldehyde



GTX22792 ICC/IF Image

ICC/IF analysis of NIH-3T3 cells using GTX22792 PDI antibody [RL90].
 Fixation : Formalin
 Permeabilization : 0.1% Triton X-100 in PBS for 10 minutes at room temperature
 Dilution : 1:75 for at least 1 hour at room temperature



GTX22792 WB Image

WB analysis of 25 ug of HepG2 (Lane 1), HeLa (Lane 2) and NIH-3T3 (Lane 3) cell lysates using GTX22792 PDI antibody [RL90].
 Dilution : 1:1000



For full product information, images and publications, please visit our [website](#).