

## Nestin antibody [2Q178]

**Cat. No. GTX26142**

<b>Host</b>	Mouse
<b>Clonality</b>	Monoclonal
<b>Isotype</b>	IgG1
<b>Applications</b>	WB, ICC/IF, IHC-P, IHC-Fr, IHC
<b>Reactivity</b>	Mouse, Rat, Dog, Hamster, Chicken

References ( 6 )

★★★★★ Review ( 1 )

Package  
50 µg

## Applications

**Application Note**

\*Optimal dilutions/concentrations should be determined by the researcher.

Suggested dilution	Recommended dilution
WB	Assay dependent
ICC/IF	1:20-1:200
IHC-P	1:20-1:200
IHC-Fr	1:20-1:200
IHC	Assay dependent

**Note : Fix cells in 4% paraformaldehyde buffered with 50mM sodium borate, pH 9.5****Perfuse tissue with 4% paraformaldehyde, pH 7.4 for light microscopy or with either 4% paraformaldehyde, pH 10 or 4% paraformaldehyde with 0.1% glutaraldehyde, pH 7.4 for EM.****Perfuse tissue with 4% paraformaldehyde, pH 7.4 for light microscopy or with either 4% paraformaldehyde, pH 10 or 4% paraformaldehyde with 0.1% glutaraldehyde, pH 7.4 for EM.**

Not tested in other applications.

**Calculated MW** 209 kDa. ( [Note](#) )**Product Note** We do not recommend use of this product for Human samples.

## Properties

<b>Form</b>	Liquid
<b>Buffer</b>	100mM Tris-Glycine, 150mM NaCl
<b>Preservative</b>	0.05% Sodium azide
<b>Storage</b>	Store as concentrated solution. Centrifuge briefly prior to opening vial. For short-term storage (1-2 weeks), store at 4°C. For long-term storage, aliquot and store at -20°C or below. Avoid multiple freeze-thaw cycles.
<b>Concentration</b>	Batch dependent (Please refer to the vial label for the specific concentration.)
<b>Immunogen</b>	Nestin purified from embryonic rat spinal cord.

For full product information, images and publications, please visit our [website](#).

**Purification** Purified IgG

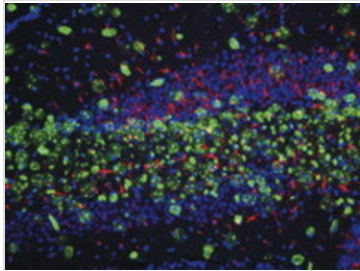
**Conjugation** Unconjugated

**Note**

For laboratory research use only. Not for any clinical, therapeutic, or diagnostic use in humans or animals. Not for animal or human consumption.

Purchasers shall not, and agree not to enable third parties to, analyze, copy, reverse engineer or otherwise attempt to determine the structure or sequence of the product.

DATA IMAGES



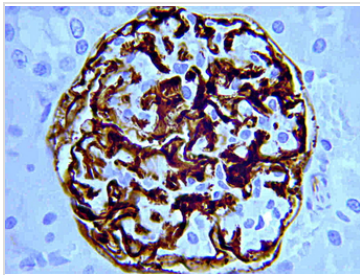
**GTX26142 IHC Image**

IHC analysis of mouse brain tissue sections (hippocampus, CA3 region) from 21 day old mice 72 hrs after dosing with trimethyltin using GTX26142 Nestin antibody [2Q178].

Blue : Nissl (rough ER)

Red : nestin (Primary antibody)

Green : lectin IB4 (microglia) or GFAP (glial fibrillary acidic protein, astrocytes)



**GTX26142 IHC-P Image**

IHC-P analysis of mouse pancreas tissue using GTX26142 Nestin antibody [2Q178]. Immunoreactivity is detected in the islets of Langerhans.

Antigen retrieval : Citrate buffer, pH 6.0



For full product information, images and publications, please visit our [website](#).