

HIV protease antibody [1696]

Cat. No. GTX28327

Host	Mouse
Clonality	Monoclonal
Isotype	IgG1
Applications	WB, Dot, ELISA
Reactivity	Human Immunodeficiency virus

Package
100 µg

Applications

Application Note

*Optimal dilutions/concentrations should be determined by the researcher.

Suggested dilution	Recommended dilution
WB	Assay dependent
Dot	Assay dependent
ELISA	Assay dependent

Not tested in other applications.

Product Note

This antibody recognizes free N-terminus of mature HIV protease (HIV-1 and HIV-2). The antibody 1696 does not react with the precursor.

Properties

Form	Liquid
Buffer	PBS
Preservative	15mM Sodium azide
Storage	Store as concentrated solution. Centrifuge briefly prior to opening vial. Store at 4°C. DO NOT FREEZE.
Concentration	1 mg/ml (Please refer to the vial label for the specific concentration.)
Immunogen	Bacterially expressed full-length HIV-1 protease
Purification	Protein A purified
Conjugation	Unconjugated

Note

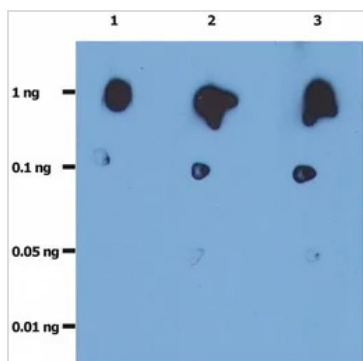
For laboratory research use only. Not for any clinical, therapeutic, or diagnostic use in humans or animals. Not for animal or human consumption.

Purchasers shall not, and agree not to enable third parties to, analyze, copy, reverse engineer or otherwise attempt to determine the structure or sequence of the product.



For full product information, images and publications, please visit our [website](#).

DATA IMAGES



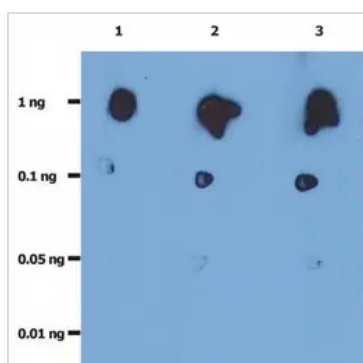
GTX28327 Dot Image

Dot blot analysis of recombinant HIV protease using GTX28327 HIV protease antibody [1696]. The total amount of recombinant HIV-protease spotted on the nitrocellulose membrane are indicated in left column.

Lane 1 : HIV Protease antibody [1696] 0.2 µg/ml

Lane 2 : HIV Protease antibody [1696] 1.0 µg/ml

Lane 3 : HIV Protease antibody [1696] 2.0 µg/ml



GTX28327 Dot Image

Dot Blot analysis of recombinant HIV protease. The total amount of recombinant HIV-protease spotted on the nitrocellulose membrane are indicated in left column.

Lane 1: anti-HIV protease (1696) (GTX28327); 0.2 µg/ml

Lane 2: anti-HIV protease (1696) (GTX28327); 1.0 µg/ml

Lane 3: anti-HIV protease (1696) (GTX28327); 2.0 µg/ml



For full product information, images and publications, please visit our [website](https://www.genetex.com).