

## Lac I antibody

**Cat. No. GTX48707**

<b>Host</b>	Rabbit
<b>Clonality</b>	Polyclonal
<b>Isotype</b>	IgG
<b>Applications</b>	WB, IP, ELISA
<b>Reactivity</b>	E. coli, Shigella sonnei

**Package**  
50 µg

## Applications

**Application Note**

\*Optimal dilutions/concentrations should be determined by the researcher.

Suggested dilution	Recommended dilution
WB	1:500-1:2000
IP	Assay dependent
ELISA	1:90000-1:100000

Not tested in other applications.

## Properties

<b>Form</b>	Liquid
<b>Buffer</b>	20mM Potassium Phosphate, 150mM NaCl
<b>Preservative</b>	0.01% Sodium azide
<b>Storage</b>	Store as concentrated solution. Centrifuge briefly prior to opening vial. For short-term storage (1-2 weeks), store at 4°C. For long-term storage, aliquot and store at -20°C or below. Avoid multiple freeze-thaw cycles.
<b>Concentration</b>	1 mg/ml (Please refer to the vial label for the specific concentration.)
<b>Immunogen</b>	Full length recombinant Lac I protein.
<b>Purification</b>	Purified by antigen-affinity chromatography. From serum
<b>Conjugation</b>	Unconjugated

**Note**

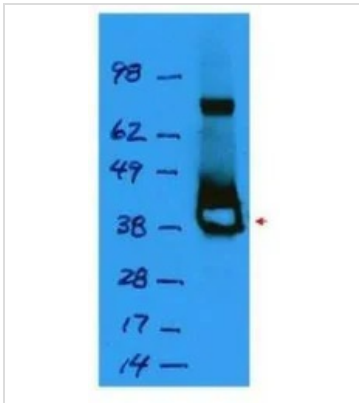
For laboratory research use only. Not for any clinical, therapeutic, or diagnostic use in humans or animals. Not for animal or human consumption.

Purchasers shall not, and agree not to enable third parties to, analyze, copy, reverse engineer or otherwise attempt to determine the structure or sequence of the product.



For full product information, images and publications, please visit our [website](#).

## DATA IMAGES

**GTX48707 WB Image**

Western blot using GeneTex's affinity purified anti-Lac I antibody shows detection of a 38 kDa band corresponding to recombinant Lac I (arrowhead). The blot was blocked with 5% BLOTTO in TBST overnight at 4°C. Primary antibody was used at a 1:1,000 dilution followed by reaction with a 1:10,000 dilution of HRP goat anti-rabbit IgG. ECL was used for detection.



For full product information, images and publications, please visit our [website](#).