

# SARS-CoV-2 (COVID-19) Spike overexpression 293T whole cell lysate

**Cat. No. GTX535664**

<b>Applications</b>	WB, ELISA
<b>Species</b>	SARS Coronavirus 2

**Package**  
200 µg

## PRODUCT

### Summary

Whole-cell lysate of 293T cells overexpressing SARS-CoV-2 spike protein (full-length, no tag). The translated amino acid sequence is based on QHD43416.1. Lysate prepared in RIPA buffer with no reducing agents and is unboiled. Please see matched control 293T lysate ([GTX535673](#)).

## Properties

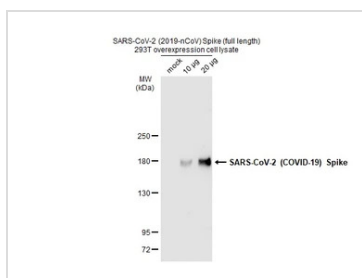
<b>Form</b>	Liquid
<b>Buffer</b>	50 mM Tris-HCl (pH8.0), 150 mM NaCl, 0.5% sodium deoxycholate, 1% Triton X-100, 0.25% SDS, 1 mM PMSF, 5 µg/ml Leupeptin, 2 µg/ml Aprotinin, 1 µg/ml Pepstatin A
<b>Preservative</b>	0.025% ProClin 300
<b>Storage</b>	Store as concentrated solution. Centrifuge briefly prior to opening vial. Aliquot and store at -20°C or below. Avoid multiple freeze-thaw cycles.
<b>Concentration</b>	1 mg/ml (Please refer to the vial label for the specific concentration.)

### Note

For laboratory research use only. Not for any clinical, therapeutic, or diagnostic use in humans or animals. Not for animal or human consumption.

Purchasers shall not, and agree not to enable third parties to, analyze, copy, reverse engineer or otherwise attempt to determine the structure or sequence of the product.

## DATA IMAGES

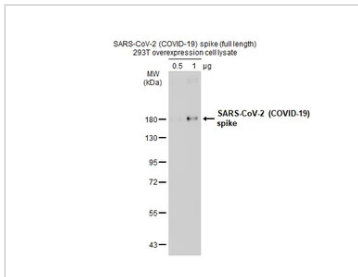


### GTX535664 WB Image

Non-transfected and transfected 293T whole cell extracts were separated by 5% SDS-PAGE, and the membrane was blotted with SARS-CoV-2 (COVID-19) Spike antibody (GTX135356) diluted at 1:5000. The HRP-conjugated anti-rabbit IgG antibody (GTX213110-01) was used to detect the primary antibody.

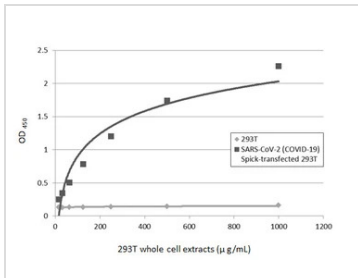


For full product information, images and publications, please visit our [website](#).



#### GTX535664 WB Image

SARS-CoV-2 (COVID-19) spike 293T overexpression cell lysates (GTX535664) were separated by 7.5% SDS-PAGE, and the membrane was blotted with SARS-CoV / SARS-CoV-2 (COVID-19) spike antibody [1A9] (GTX632604) diluted at 1:1000. The HRP-conjugated anti-mouse IgG antibody (GTX213111-01) was used to detect the primary antibody, and the signal was developed with Trident ECL plus-Enhanced.



#### GTX535664 ELISA Image

Sandwich ELISA detection of non-transfected (GTX535673) and SARS-CoV-2 spike (full length) transfected (GTX535664) 293T whole cell extracts using SARS-CoV-2 (COVID-19) Spike S1 antibody [GT263] (GTX635708) as capture antibody at concentration of 5 μg/mL and SARS-CoV-2 (COVID-19) Spike S1 antibody [HL263] (GTX635672) as detection antibody at concentration of 1 μg/mL. Rabbit IgG antibody (HRP) (GTX213110-01) was diluted at 1:10000 and used to detect the primary antibody.



For full product information, images and publications, please visit our [website](https://www.genetex.com).