

E. coli DnaK protein

Cat. No. GTX57460-pro

Species E. coli

Package
100 µg

Applications

Observed MW (kDa) 69 kDa.

Properties

Form Liquid

Buffer 25mM Tris-HCl, 100mM NaCl, 10% Glycerol, 5mM DTT

Preservative No preservative

Storage Store as concentrated solution. Centrifuge briefly prior to opening vial. For short-term storage (1-2 weeks), store at 4°C. For long-term storage, aliquot and store at -20°C or below. Avoid multiple freeze-thaw cycles.

Concentration 1 mg/ml (Please refer to the vial label for the specific concentration.)

Region/Sequence

Full length protein, MGKIIIGIDLG TTNSCVAIMD GTTPRVLENA EGDRTTPSII AYTQDGETLV GQPAKRQAVT NPQNTLFAIK RLI GRRFQDE EVQRDVSIMP FKIIAADNGD AWVEVKGQKM APPQISAEVL KKMKKTAEDY LGEPVTEAVI TVPAYFNDAQ RQATKDAGRI AGLEVKRIIN EPTAAALAYG LDKGTGNRTI AVYDLGGGTF DISIIEIDEV DGEKTFEVL TNGDTHLGG E DFDSRLINYL VEEFKDQGI DLRNDPLAMQ RLKEAAEKAK IELSSAQQT D VNLPLYTADA TGPKHMNIKV TRAKLES LVE DLVNR SIEPL KVALQDAGLS VSDIDDVILV GGQTRMPMVQ KKVAEFFGKE PRKDVNPDEA VAIGAAVQGG VLTGDVKDVL LLDVTPSLG IETMGGVMTT LIAKNTTIPT KHSQVFSTAE DNQSAVTIHV LQGERKRAAD NKSLGQFNLD GINPAPRGMP QIEVTFDIDA DGILHVS AKD KNSGKEQKIT IKASSGLNED EIQKMVRDAE ANAEADRKFE ELVQTRNQGD HLLHSTRKQV EEAGDKLPAD DKTAIESALT ALETALKGED KAAIEAKMQE LAQVSQKLME IAQQQHAQQQ TAGADASANN AKDDD VVDAE FEEVKDKK

Expression System E. coli

Purity > 95% by SDS-PAGE.

Conjugation Unconjugated

Note

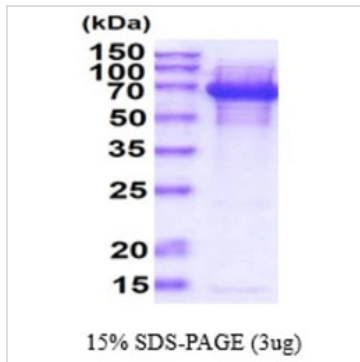
For laboratory research use only. Not for any clinical, therapeutic, or diagnostic use in humans or animals. Not for animal or human consumption.

Purchasers shall not, and agree not to enable third parties to, analyze, copy, reverse engineer or otherwise attempt to determine the structure or sequence of the product.



For full product information, images and publications, please visit our [website](#).

DATA IMAGES

**GTX57460-pro Image**

3 μ g DnaK protein (GTX57460-pro) by SDS-PAGE under reducing condition and visualized by coomassie blue stain.



For full product information, images and publications, please visit our [website](#).